



Water-Reel® Irrigation

700 S. Schrader Ave.
P.O. Box 290
Havana, IL 62644
USA
Phone: 309.543.4425
Fax: 309.543.4945

PARTS MANUAL

T25A, T27A, 30AS

S/N 340,000 - 379,999

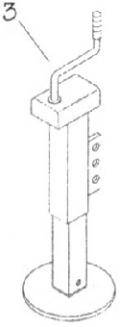
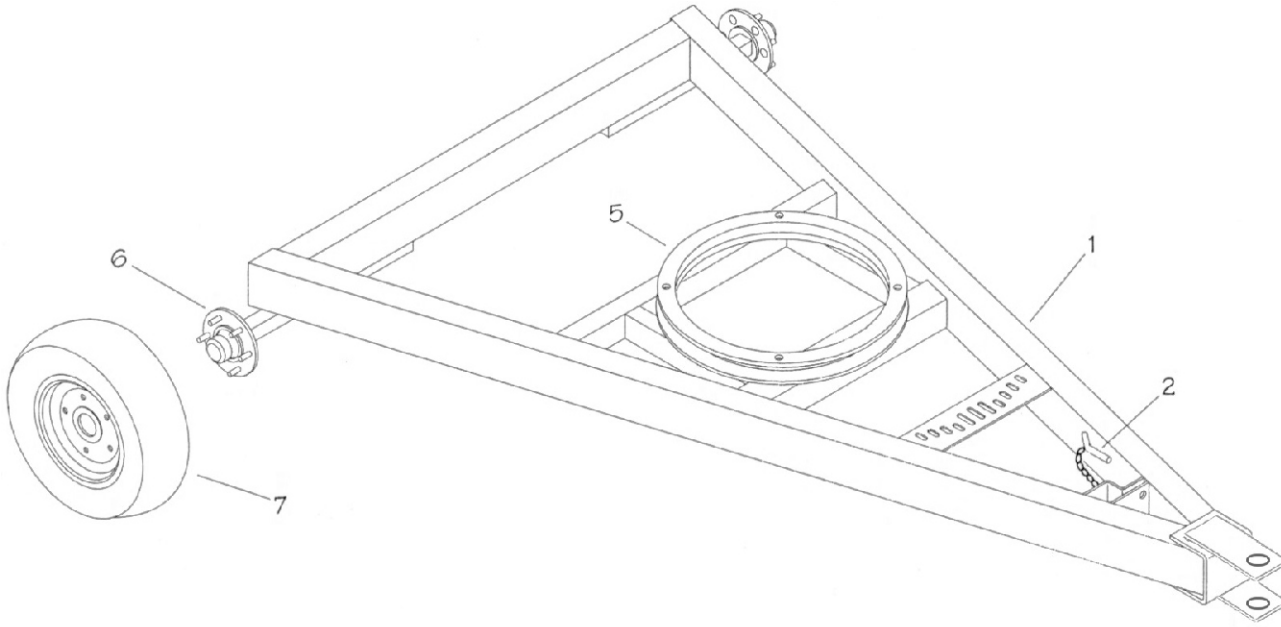
Assembly	Page
Running Gear Assembly	2
Cradle Assembly	3
Spool Assembly	4-5
Levelwind Assembly	6
Sprinkler Cart Lift	7
Shut Off Bar Assembly	8
Shield Group	9
Turbine Assembly	10-12
Drive Train Group	13-15
Gearbox Assembly 93:1	16-17
Sprinkler Cart Assembly	18
Engine Drive Assembly (Early S/N)	19-20
Engine Drive Assembly	21-22
Booster Pump Assembly	23

Notes:

For Parts That Are Described As "Left" Or "Right" The Water Inlet Side Of The Machine Is Considered The Right Side.

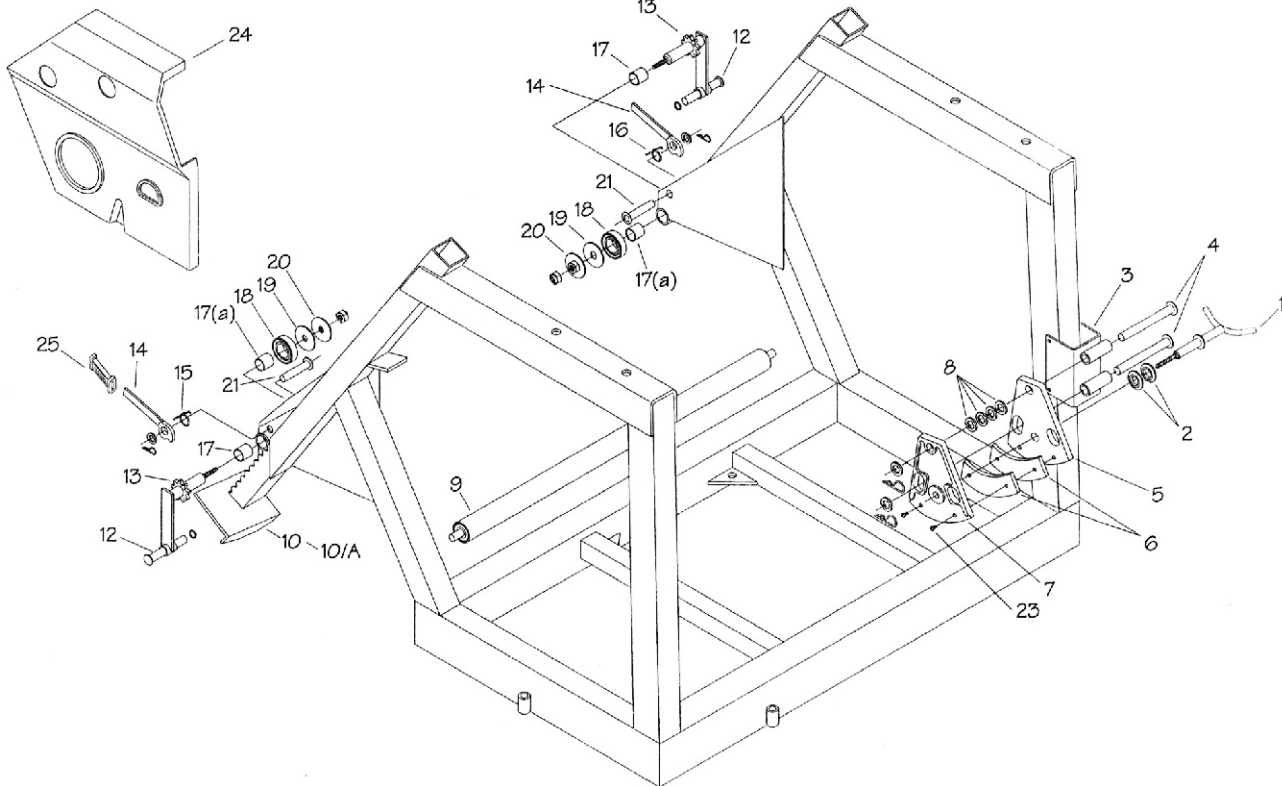
Items Such As Common Fasteners, Grease Fitting, And Other Small Parts Easy To Acquire Locally Are Not Listed.

Running Gear Assembly



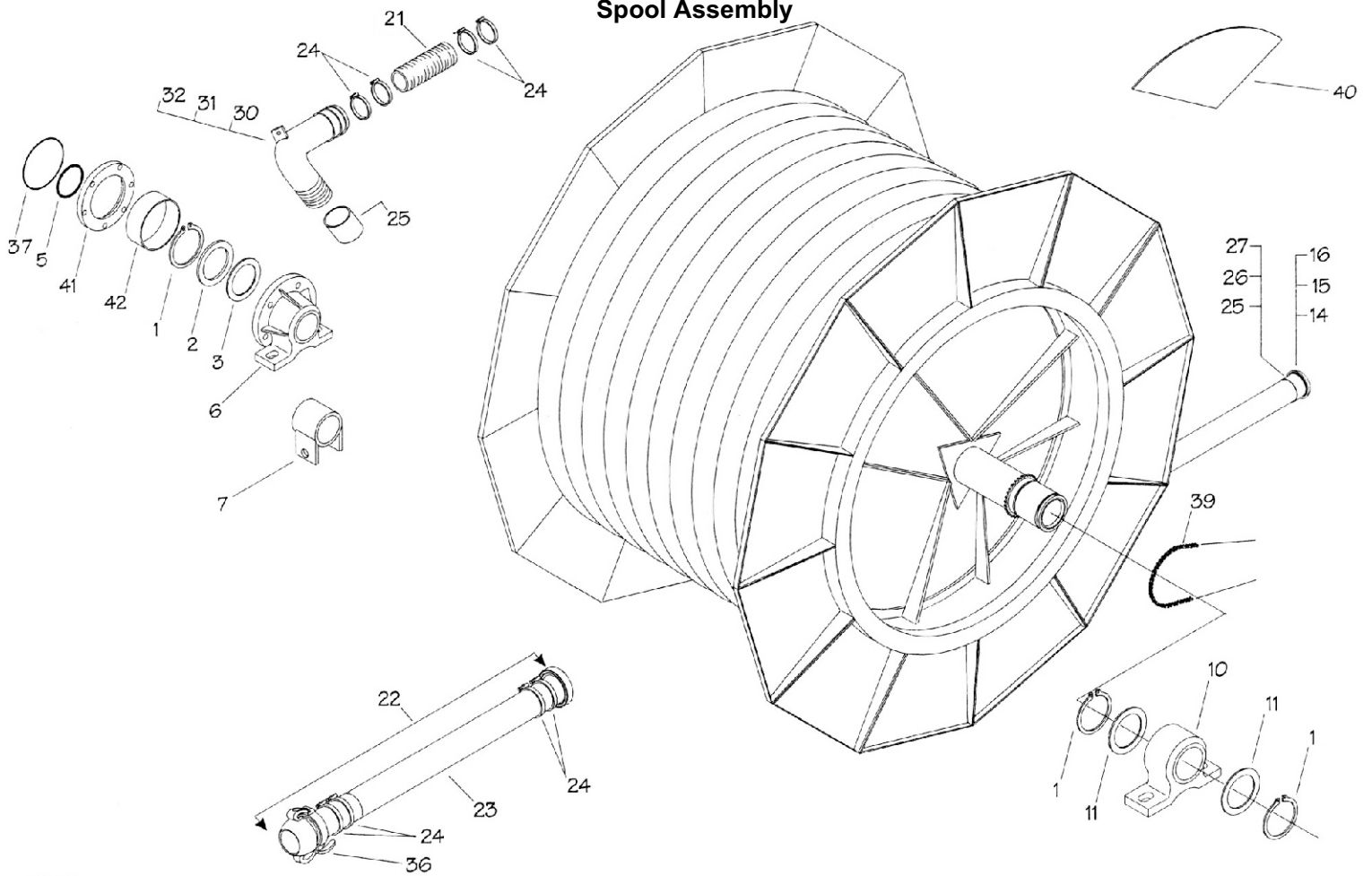
Running Gear Assembly			
No.	Part Number	Description	Qty.
1	022-0138-0	Frame, (Chassis)	1
2		Pin	1
3	020-0040-2	Screwjack	1
5	020-1012-1	Bearing Turntable	1
6a	022-0139-0	Seal	2
6b	022-0140-0	Bearing, 30208	2
6c	022-0141-0	Hub	2
6e	022-0142-0	Bearing, 30206	2
6f	022-0143-0	Nut, Spindle	2
6g	022-0144-0	Dust Cap	2
6h	022-0146-0	Nut, (Lug)	10
7A	022-1014-0	Wheel and Tire 185/70-13	2
7B	0221014-1	Wheel and Tire 175/75-13	2
7C	022-1014-2	Wheel and Tire 195/60-14	2
7D	022-1014-3	TIRE, 195/60/14	2
7E	022/1014-4	WHEEL & TIRE, 195/60/15	2
7F	022-0145-0	Rim only 14"	2
7G	020-0141-6	Rim only 13"	2

Cradle Assembly



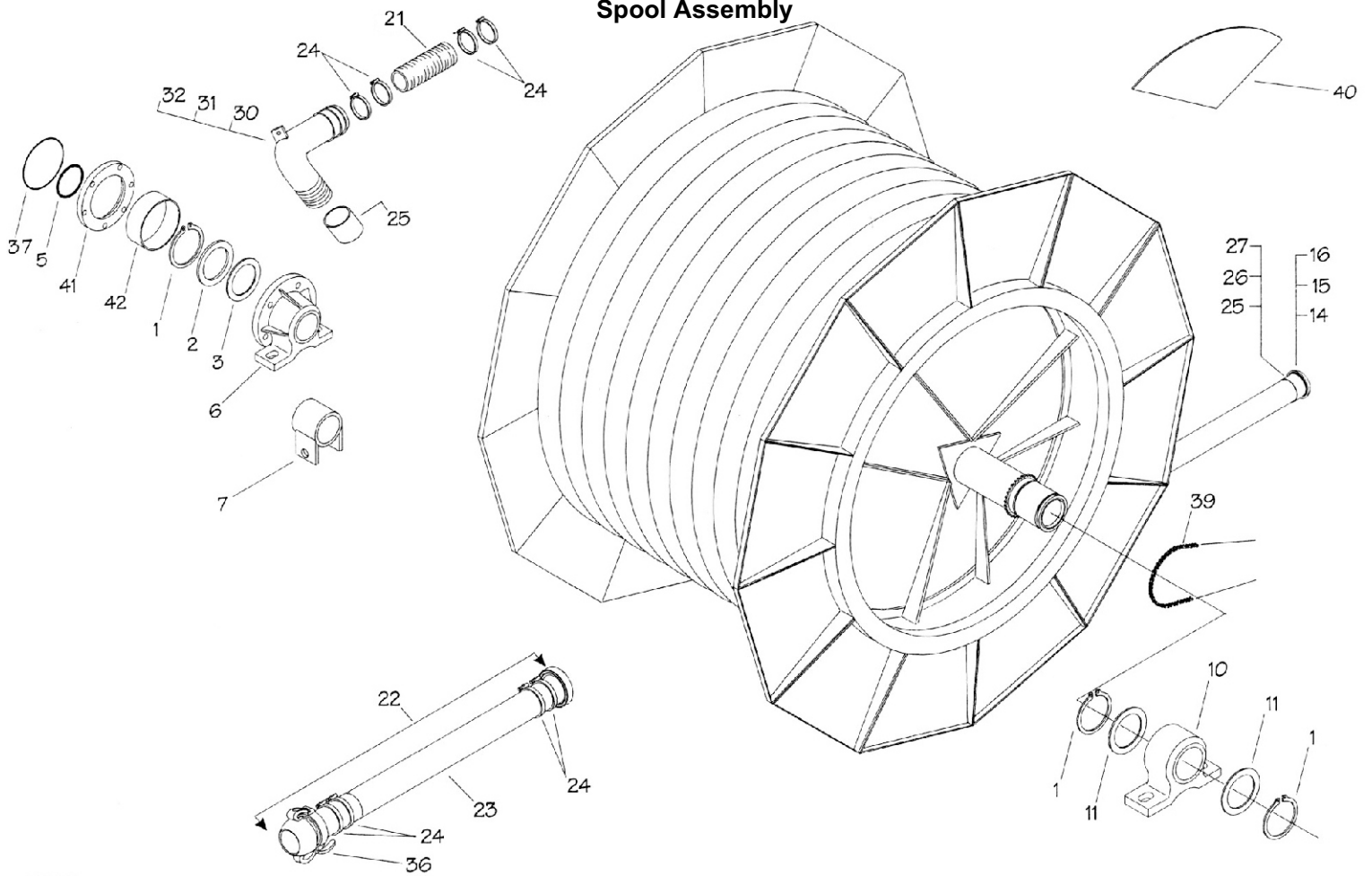
Cradle Assembly			
No.	Part Number	Description	Qty.
1	022-0159-0	Brake Control Screw	1
2	022-0156-0	Hitrel Washer	4
3	022-0527-2	Brake Mount	1
4	022-0160-0	Pin, Brake	2
5	022-0158-1	Brake Plate	1
6	022-0454-0	Slide, (Brake Pad)	2
7	022-0157-1	Brake Plate, Threaded	1
8		Washer, Dia. 20	4
9	020-1041-0	Roller, Horizontal (D2) & (A1)	1
10/a	020-1012-5	Leg, Right	1
10/b	020-1013-4	Leg, Left	1
12	020-9904-8	Handle	2
13	020-9957-8	Crank	1
14	020-1012-7	Pawl	2
15	020-1012-8	Spring Right	1
16	020-1013-5	Spring Left	1
17	020-9905-6	Bushing	4
18	020-9905-9	Spring, Rubber	2
19	020-9904-9	Washer, Plastic	2
20	020-9905-8	Retainer Nut	2
21	020-1012-9	Pin, .55 X 3.37" OAL	2
23	550-7010-0	Bolt, 8-1.25 X 20mm Brass (Brake Pad)(Not Shown)	4
24	022-0481-1	Shield, Turbine A1	1
25	022-0154-0	Grip	2

Spool Assembly



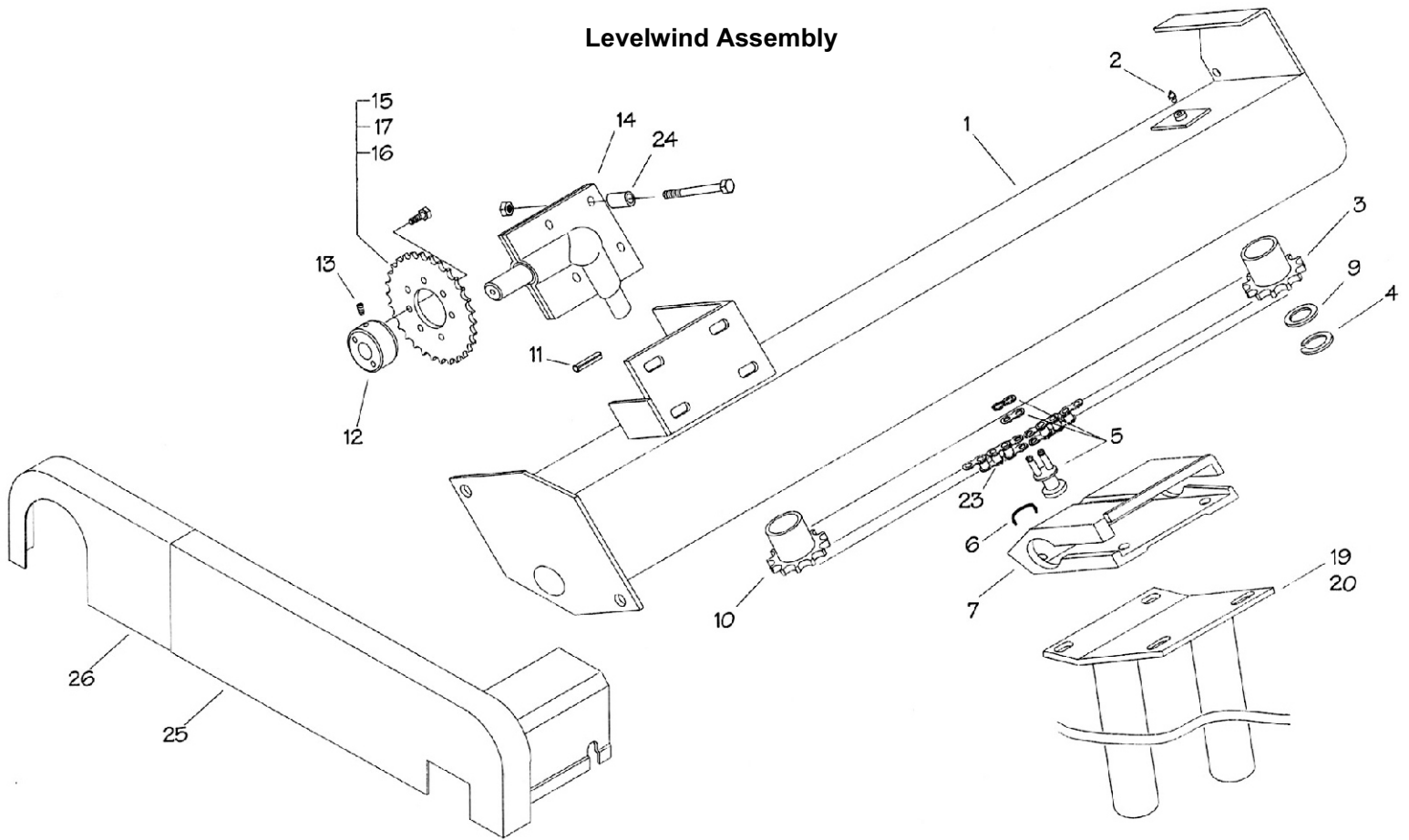
Spool Assembly				
No.	Part Number	Description		Qty.
1	020-0042-8	Retaining Ring		3
2	020-0043-9	Spacer		1
3	020-0044-1	Washer, Wear		
5	022-1010-0	O-Ring 335 (69,22x5.34)		
6	020-0044-2	Bearing, RH Spool		
7	022-0151-0	Drive Spacer		
10	020-0043-	Bearing, LH Spool		1
11	020-0042-9	Spacer		2
14	020-0045-3	Tube End X 75mm		
15	022-0541-0	Tube End X 82mm		
16	022-0696-0	Tube End X 90mm		
21	022-0148-0	Hose, Feeder		1
22	588-0284-1	Supply Hose 3" x 30 Ft.		1
23	252-4962-3	HOSE, IRR SUPPLY REMNANT 3"		1
24	030-1919-4	SUPRA CLAMP 73MM-79MM		8
25	020-9945-0	Hoseband, 75mm		2
26	020-9911-2	Hoseband, 82mm		2

Spool Assembly



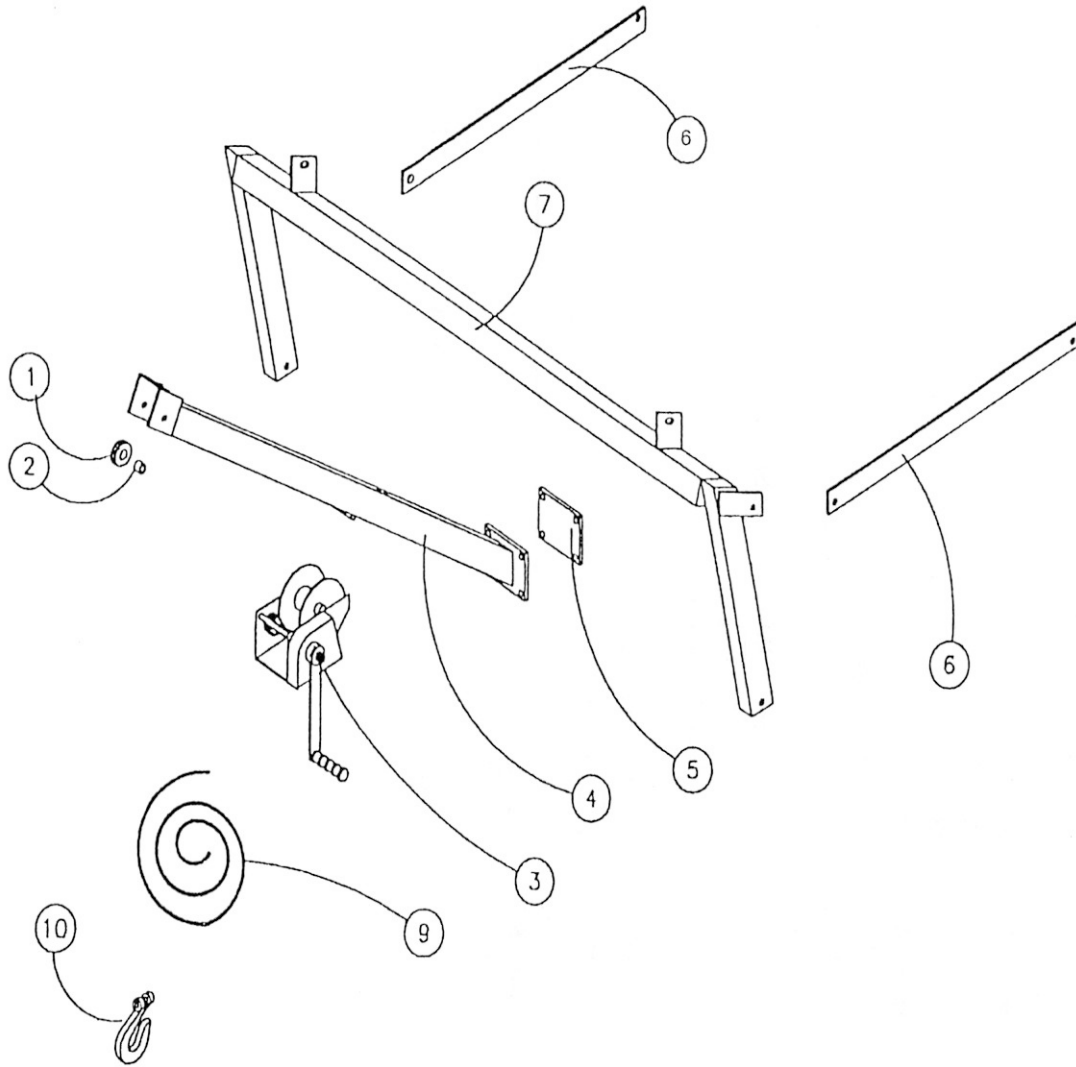
27	020-9911-3	Hoseband, 90mm		2
30	022-0147-0	Hosetail, Bend Dia. 75		1
31	022-0147-1	Hosetail, Bend Dia. 82		1
32	022-0697-0	Hosetail, Bend Dia. 90		1
35a	588-0266-2	Hose End, 3" X 4" Male Ring Lock		1
35b	400-4927-0	4" Ring Lock Band (Not Shown)		1
36	588-0022-1	Ring, 3" Lever Lock (76mm)		1
37	022-1011-0	O-Ring 243 104,4, x 3.53		1
38	588-0256-0	Hose End Outlet 3"		1
39	020-0114-0	Chain 1/2 Metric Roller (198 Rollers)	Ft.	8.25
40	593-0039-3	Shield, 25 Spool		6
41	022-0698-0	Flange		1
42	022-0699-0	Spacer		1

Levelwind Assembly



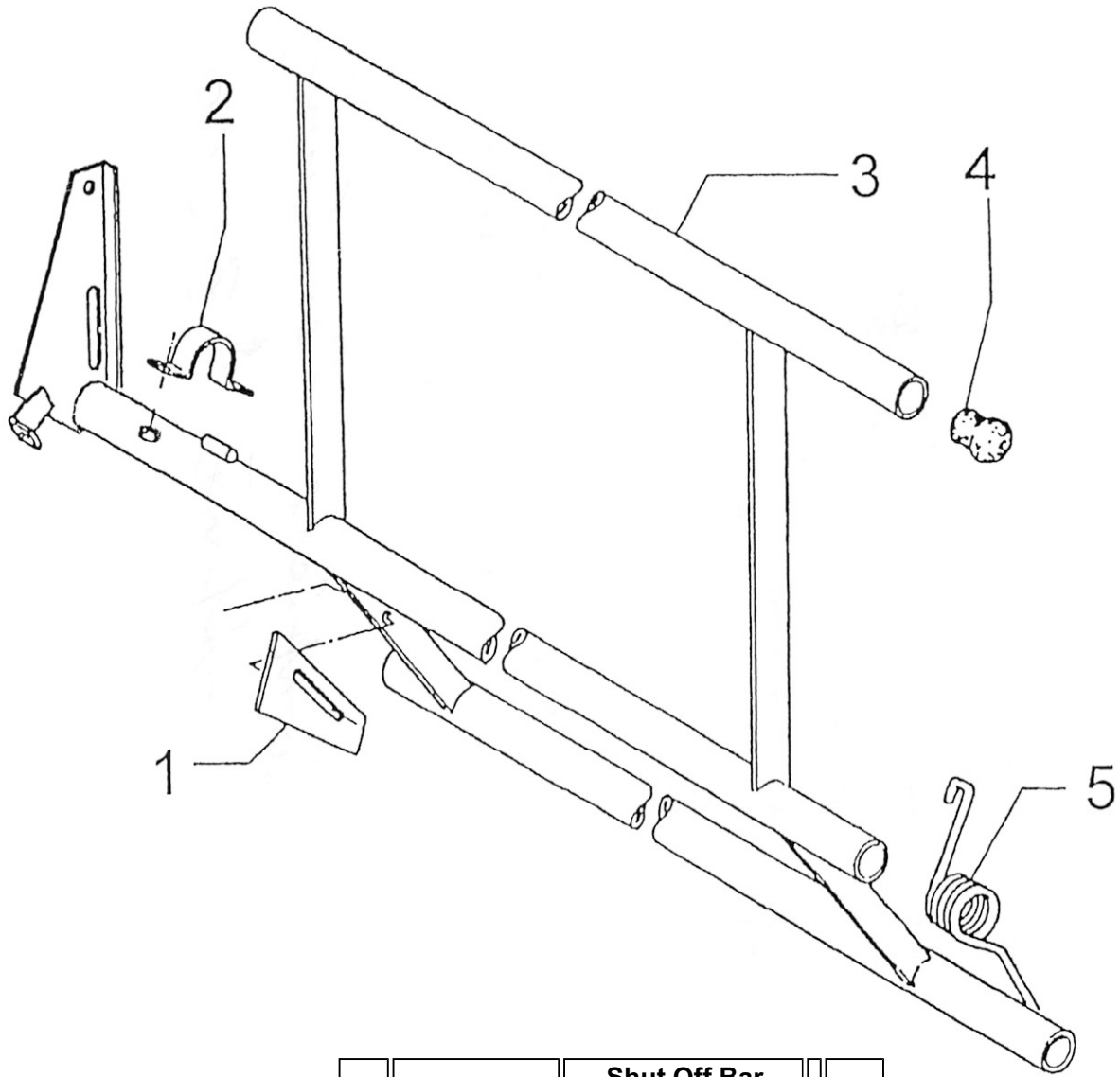
Levelwind Assembly				
No.	Part Number	Description		Qty.
1	021-9947-7	Levelwind Frame		1
3	020-0047-5	Sprocket, Levelwind Idler		1
4	526-6254-0	Snap Ring		1
5	020-0049-6	Guide Link		1
6	020-0077-6	Retaining Clip		1
7	020-0014-1	Fork Support		1
9	553-0628-0	Spacer, 1 1/2 X 1 X 18 Ga		1
10	020-0047-9	Sprocket, Levelwind Driver		1
11	589-0214-0	Spring Pin 7 mm X 45 mm		1
12	020-0015-3	Hub, Sprocket		1
13	020-015-2	Set Screw		1
14	020-0108-5	Angle Drive Gearbox		1
15	020-0048-2	Sprocket 30 Tooth (75mm Machine)		1
16	022-0386-0	Sprocket 27 Tooth (82mm Machine)		1
17	022-1013-0	Sprocket, 25 Tooth (90mm Machine) can use a 26 tooth		1
19	020-1014-2	Fork Dia. 75mm-82mm		1
20	022-1012-0	Fork Dia. 90mm		1
23a	020-0114-1	Chain, 5/8" (75mm-82mm Has 150 Rollers)	Ft.	7.81
23b	020-0114-1	Chain, 5/8" (90mm Has 148 Rollers)	Ft.	7.71
24	020-0108-4	Spacer		1
25	033-0122-0	Shield		1
26	022-0123-2	Shield		1

Sprinkler Cart Lift Assembly



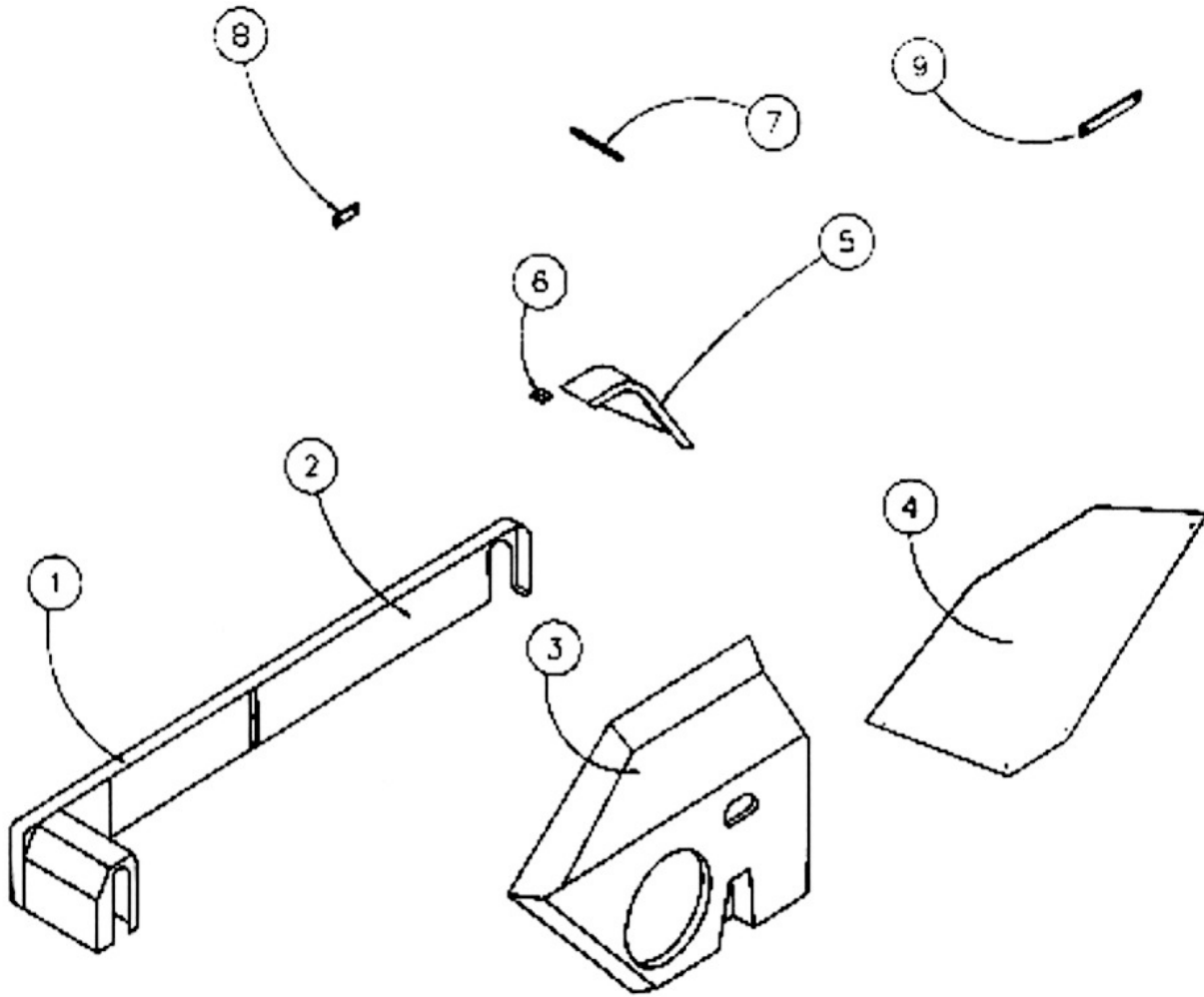
Sprinkler Cart Lift Assembly				
No.	Part Number	Description	Ft	Qty.
1	402-4906-0	Pulley, 2X 17.32 WRP		1
2	325-5191-0	Bushing, .56 X .843 X .62 Long		1
3	400-4855-1	Winch, Fulton K 1550		1
4	588-0298-2	Boom		1
5	588-0345-0	Clamp, Plate		1
6	594-0524-0	Brace, Boom		2
6a	503-0057-0	Brace With Operator Mt. - A1		1
7	594-0522-0	Boom Lift		1
9	750-4844-0	Cable, 1/4 Galv. 7 X 19 Gac	Ft	10
10	523-5565-0	Hook		1

Shut Off Bar Assembly



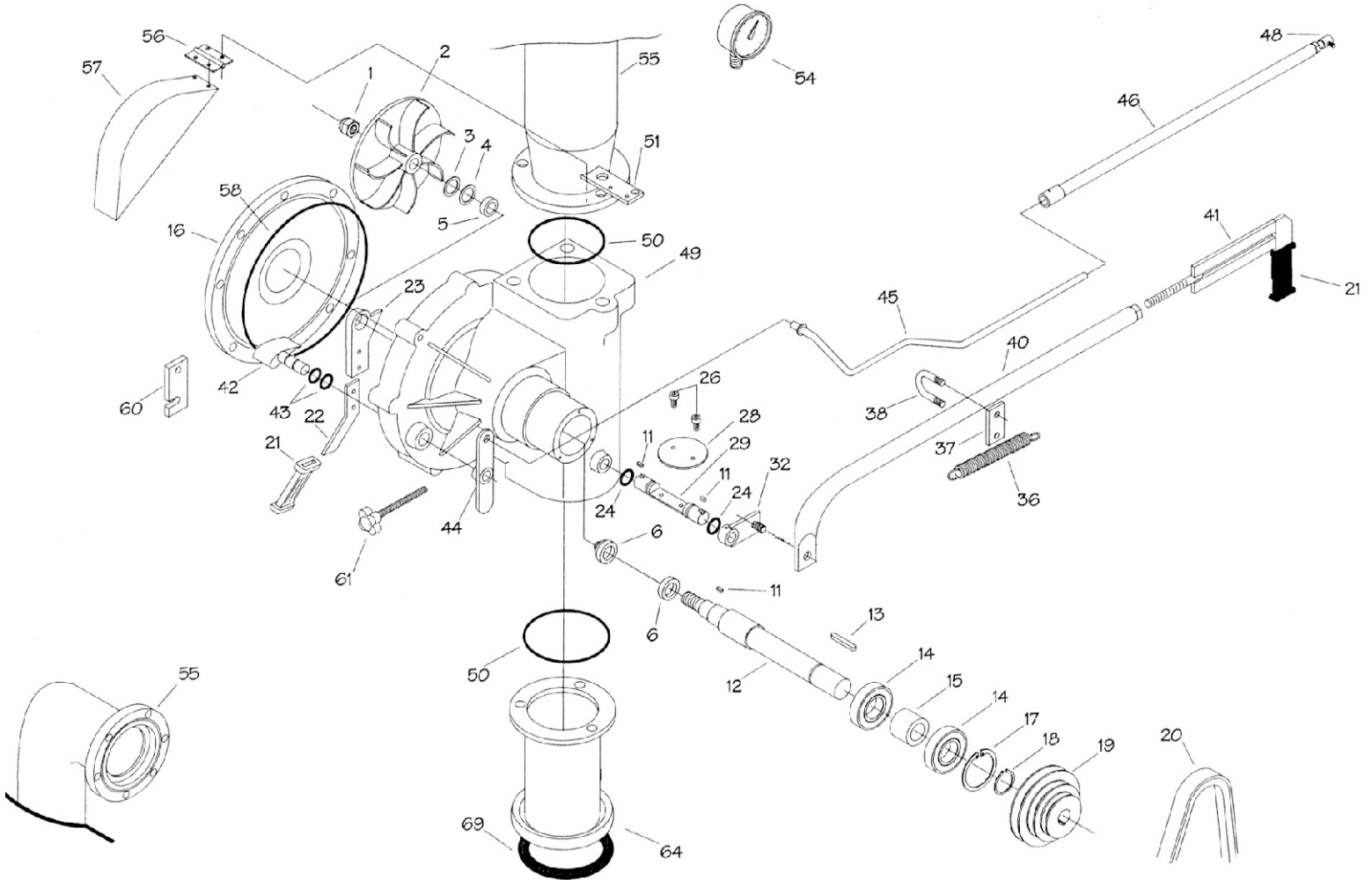
No.	Part Number	Description	Qty.
1	022-0161-0	Retainer	1
2	020-0016-4	Bearing	2
3	022-0528-0	Hose Retention Bar	1
4	022-0163-0	Plug	4
5	020-0016-6	Spring	1

Shield Group



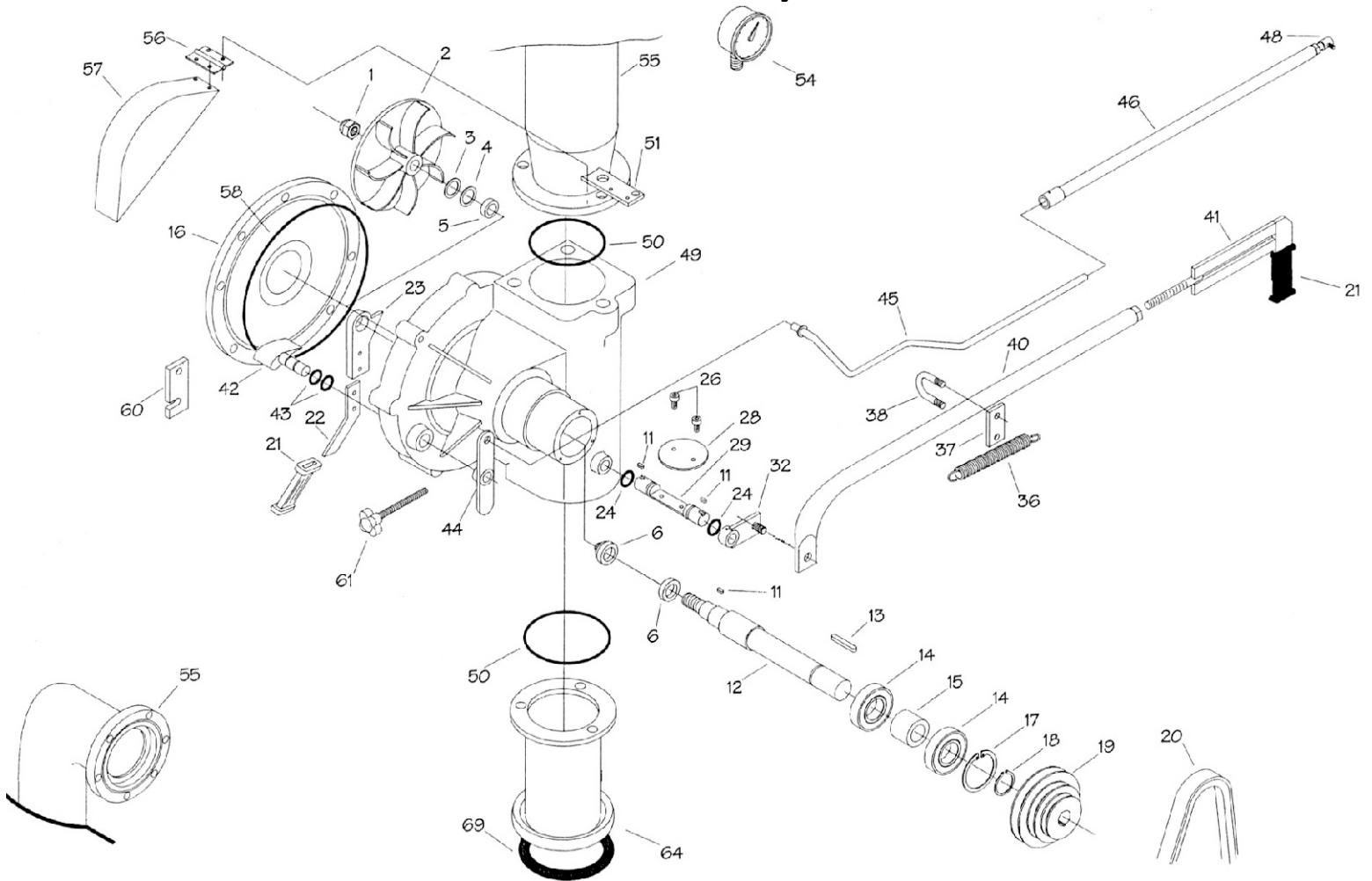
Shield Group			
No.	Part Number	Description	Qty.
1	022-0122-0	Shield, Levelwind Chain	1
2	022-0123-2	Shield, Levelwind Chain	1
3	022-0481-1	Hood A1	1
4	593-0039-3	Shield, Spool Sides 25	1
5	022-0388-0	Shield, Belt	1
6	022-0389-0	Hinge	1
7	596-0029-0	Hood Mt. Stud Front	1
8	595-0665-0	Hood Mt. Plate Rear	1
9	596-0028-0	Hood Mt. Front	1

Turbine Assembly



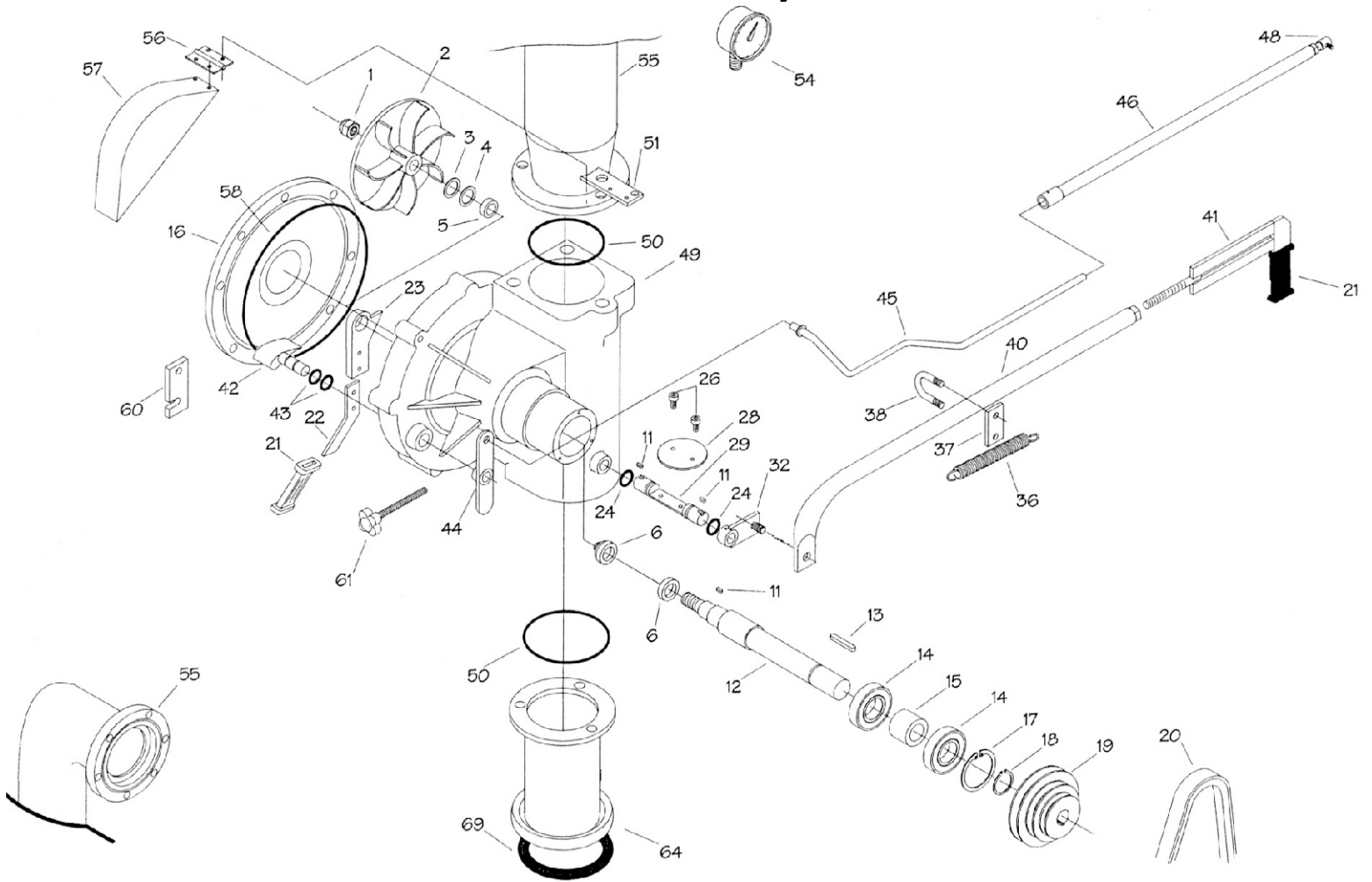
Turbine Assembly			
No.	Part Number	Description	Qty.
1	022-0198-0	Nut, Self Locking Thin M14 X 1.5	1
2	022-0199-0	Impeller 5.43 X .51 Vane Height	1
3	022-0543-0	Spacer Mylar, .039" Thick	1
4	022-0300-0	Spacer, .28" Thick X .64" ID X 1.0"OD	1
5	022-0339-0	Shim, 25mm x 20mm x 1mm thick	1
6	022-0545-0	Seal 20x6	1
11	022-0337-0	Key 5mm x a5mm x 10mm Long	3
12	022-0326-0	Impeller (Shaft)	1
13	022-0551-0	Key 6 X 50	1
14	022-0167-1	Bearing, 5204 2RS	2
14a	022-0167-0	BEARING, 6204 2RS (SINGLE ROLL, TWO USED SOMETIMES)	1
15	553-0628-5	Spacer, .134 Thick (WHEN BOTH ARE SINGLE ROLLER BEARINGS)	1
15A	553-7001-0	WASHER, FLAT 37MM X 20MMX3MM (USED WITH DOUBLE ROLL)	1
16	022-0334-0	Impeller Cover	1
17	022-0324-0	Snap Ring Dia. 47	1
18	022-0323-0	Snap Ring Dia. 20	1
19	022-0592-0	Pulley, Three Step 45mm x 67mm x 92mm	1
20	022-0666-0	Belt AX-35	1
21	022-0414-0	Hand Grip	1

Turbine Assembly

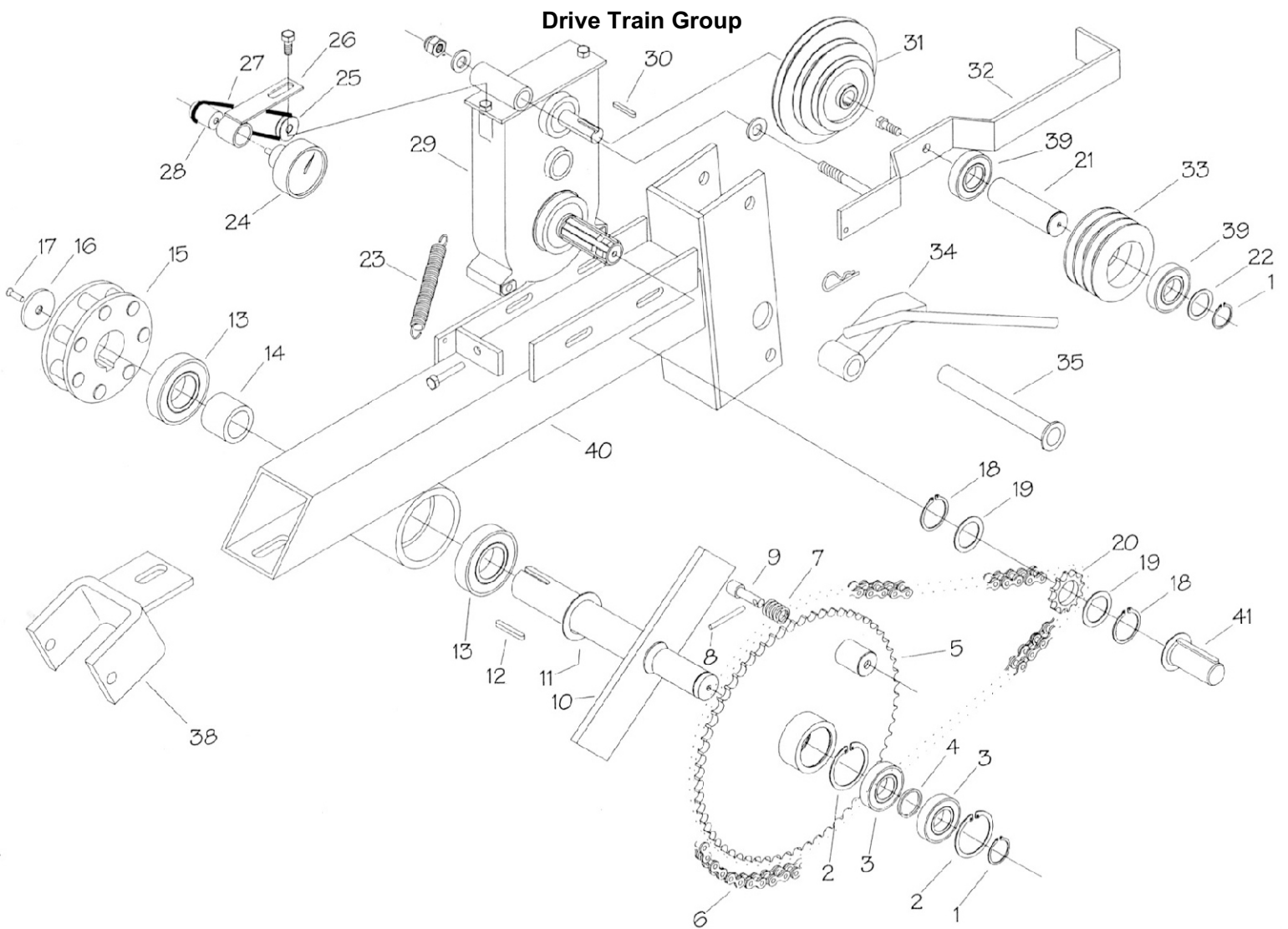


22	022-0557-0	Plate Lever	1
23	022-0558-1	Lever	1
24	022-0306-0	O-Ring Dia. 10.77 x 2.62	2
26	022-0305-0	Screw 6 x 16 Inox	2
28	022-0340-0	Disc By-Pass	1
29	022-0307-1	Shaft, By Pass	1
32	022-0310-0	Lever, Control By-Pass	1
36	022-0318-0	By-Pass Spring	1
37	022-0592-0	Spring Support	1
38	022-0312-0	U-Bolt M8	1
40	022-0311-2	Shut Off Pipe	1
41	022-0316-2	Tie Rod 14mm Thread	1
42	022-0332-0	Regulator Flap With Pin	1
43	022-0331-0	O-Ring Dia. 8.73 x 1.78	2
44	596-0300-0	Control Lever	1
45	022-0313-0	Rod, Turbine Side	1
46	022-0569-0	Rod, Hose Retention Side	1
48	022-0341-0	Rod End, Dia 8.	1
49	022-0302-0	Turbine Body	1
50	022-0303-0	O-Ring, Dia 71.54 x 3.53	2
51	022-0571-1	Bracket, Shield	1

Turbine Assembly

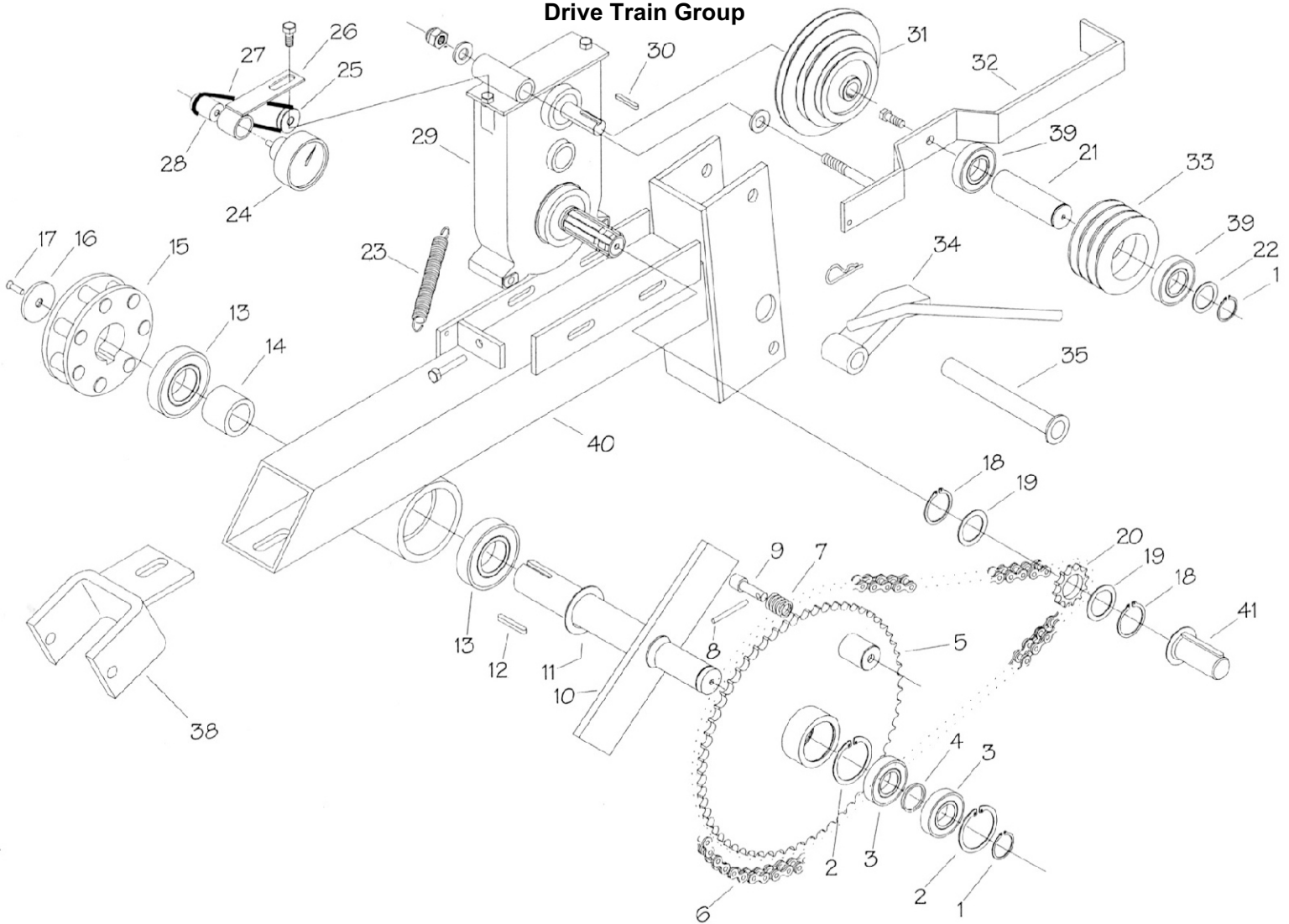


54	586-0675-0	Gauge, Press 0-300	1
55	022-1031-0	ELBOW, UPPER A1 340000+	1
56	022-0389-0	Hinge	1
57	022-0388-0	Shield, Belt	1
58	022-0333-0	O-Ring Dia. 203 x 3.53	1
60	022-0573-0	Stop Plate	1
61	022-0391-0	Hand Wheel	1
64	022-0308-0	Lower Feeder Elbow 3"	1
69	588-0022-3	Gasket 3"	1



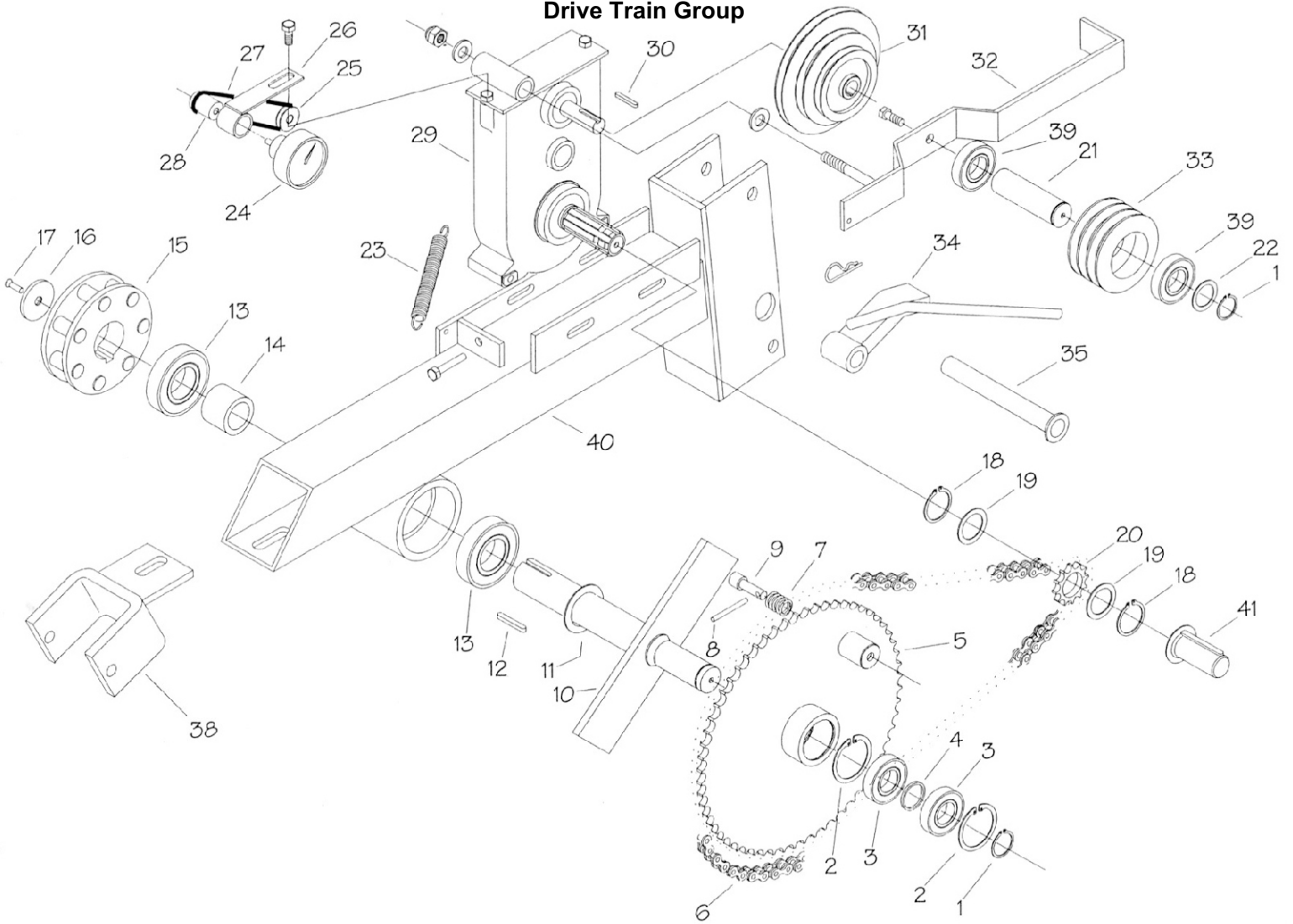
Drive Train Group				
No.	Part Number	Description		Qty.
1	022-0342-0	Stop Ring E25		1
2	022-0343-0	Stop Ring i47		2
3	022-0344-0	Bearing, 6005 2RS		2
4	022-0345-0	Spacer, Dia. 26		1
5	022-0346-0	Clutch Sprocket Z90 1/2"		1
6a	020-0114-0	Chain 1/2 Metric Roller (112 Rollers)	Ft.	4.67
6b	022-0111-0	Link, Connector, 1/2"		1
6c	022-0110-0	Link, Off Set		1
7	022-0347-0	Spring		1
8	022-0348-0	Pin		1
9	022-0349-0	Pin		1
10	022-0350-0	Pin, Dia. 35		1
11	022-0352-0	Spacer Dia. 36		1
12	022-0351-0	Key, 10 x 30		1
13	022-0353-0	Bearing 6207 2RS		2
14	022-0354-0	Spacer		1
15	022-0358-0	Pinion Dia. 35 Z7		1

Drive Train Group



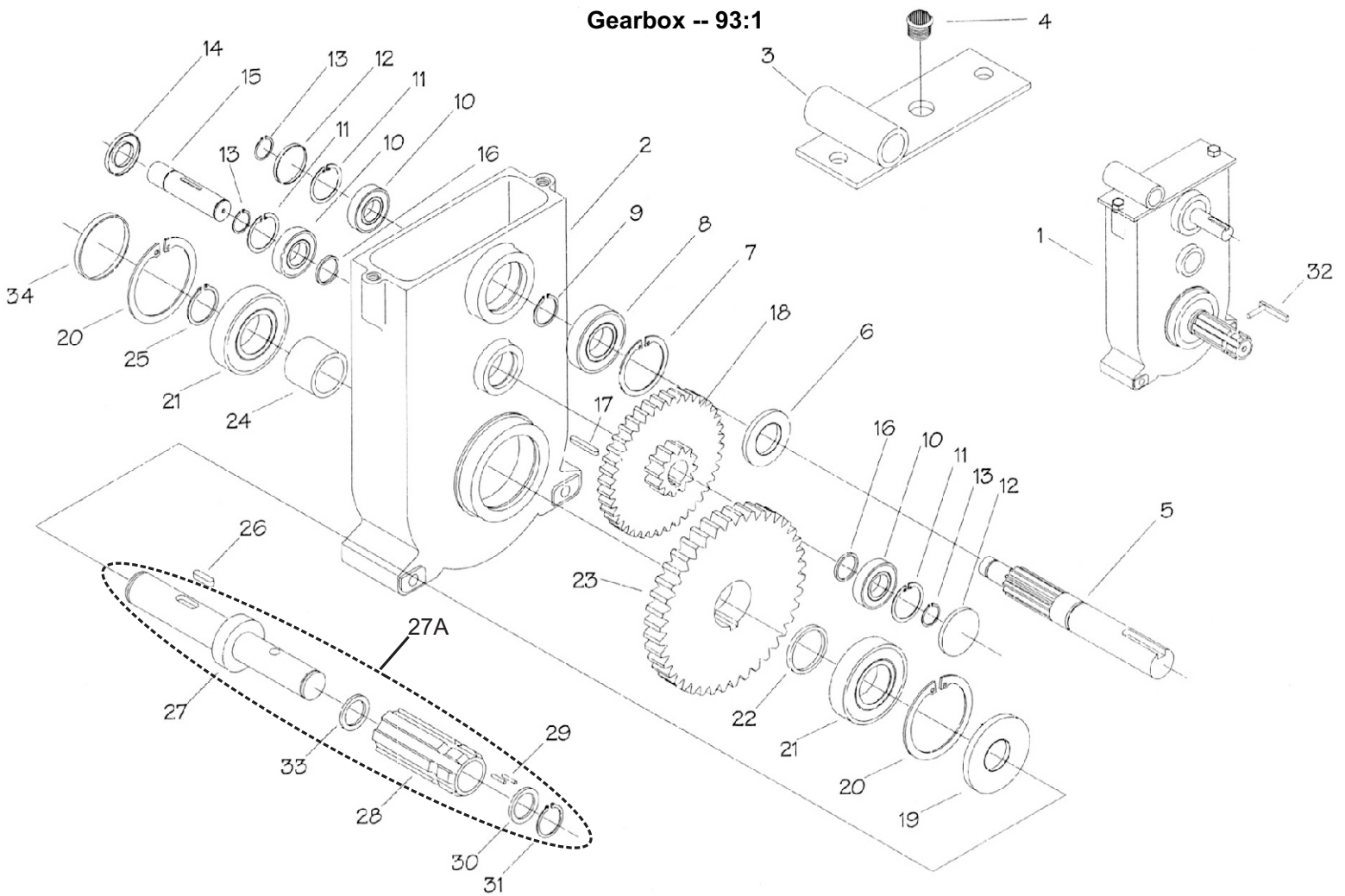
16	022-0359-0	Special Washer		1
17	550-7001-0	Bolt, 8mm x 18mm		1
18	022-0360-0	Stop Ring E35		2
19	022-0363-0	Spacer Dia. 35 x 1		1
20	022-0362-1	Splined Crown 1/2" Z15		1
21	022-0653-0	Shaft, Belt Idler		1
22	022-0703-0	Spacer, 1mm		2
23	022-0318-0	Spring		1
24	022-0120-0	Tach		1
25	599-0416-3	Pulley, A1 Base 1.339" 34mm		1
26	022-0367-0	Tach Support		1
27	022-0366-1	Belt, Dia. 3.5 x 590		1
28	594-0441-1	Tach Pulley		1
29	022-0439-4	Gearbox 93.0 to 1 complete		1
30	022-0551-0	Key 6 x 50		1
31	022-0593-0	Pulley Three Step 100mm, 125m, 147 mm		1
32	022-0704-0	Idler Lever A1		1
33	022-0654-0	Pulley Idler 3 Groove		1
34	022-0356-0	Anti-Reverse Key		1
35	022-0371-0	Pin, Non Return Pawl		1

Drive Train Group



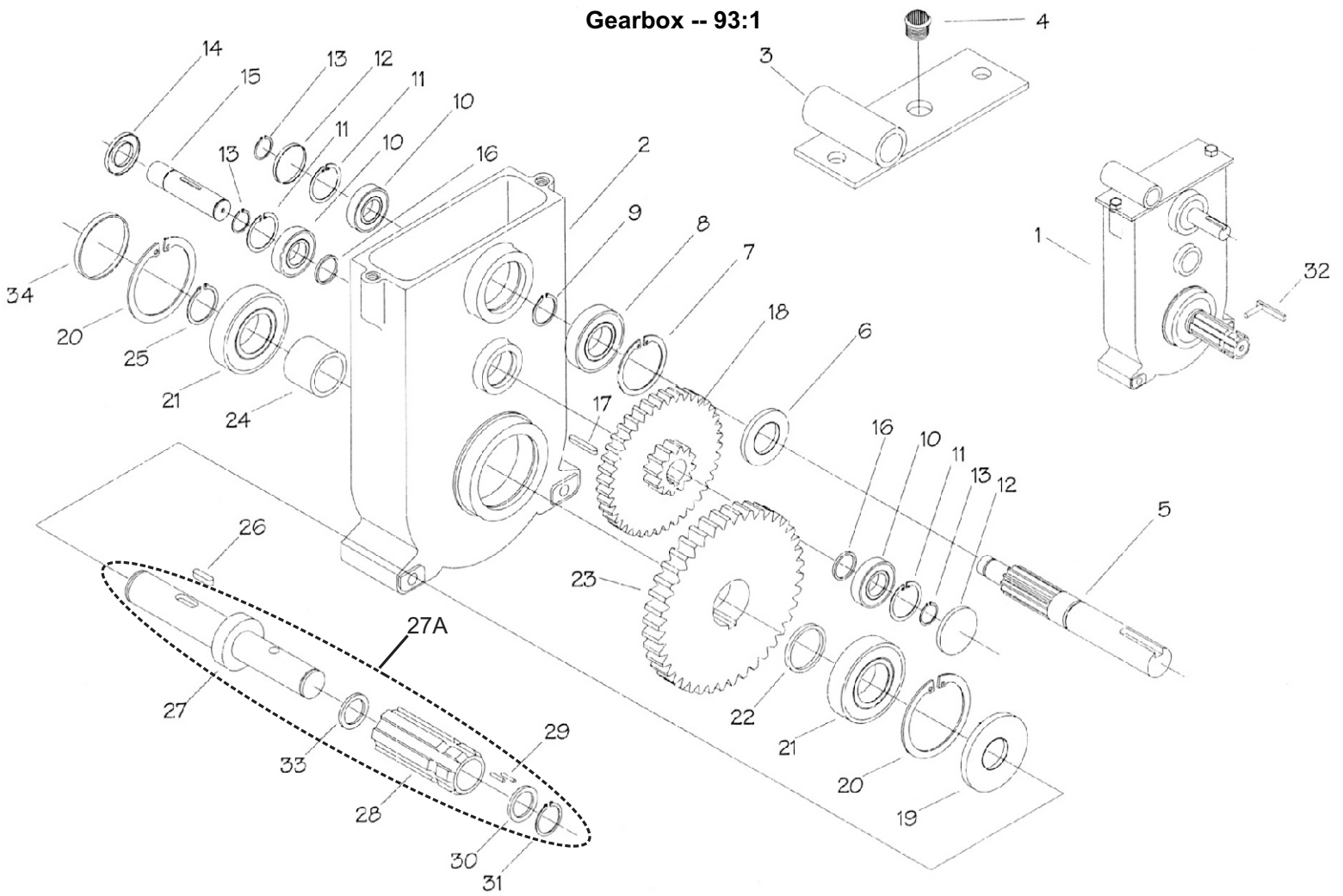
38	022-0372-0	End Support		1
39	022-0344-0	Bearing 6005 2RS		2
40	022-0355-1	Turbine Mechanism Support A1		1
41	022-0121-0	Shield, PTO Cover		1

Gearbox -- 93:1



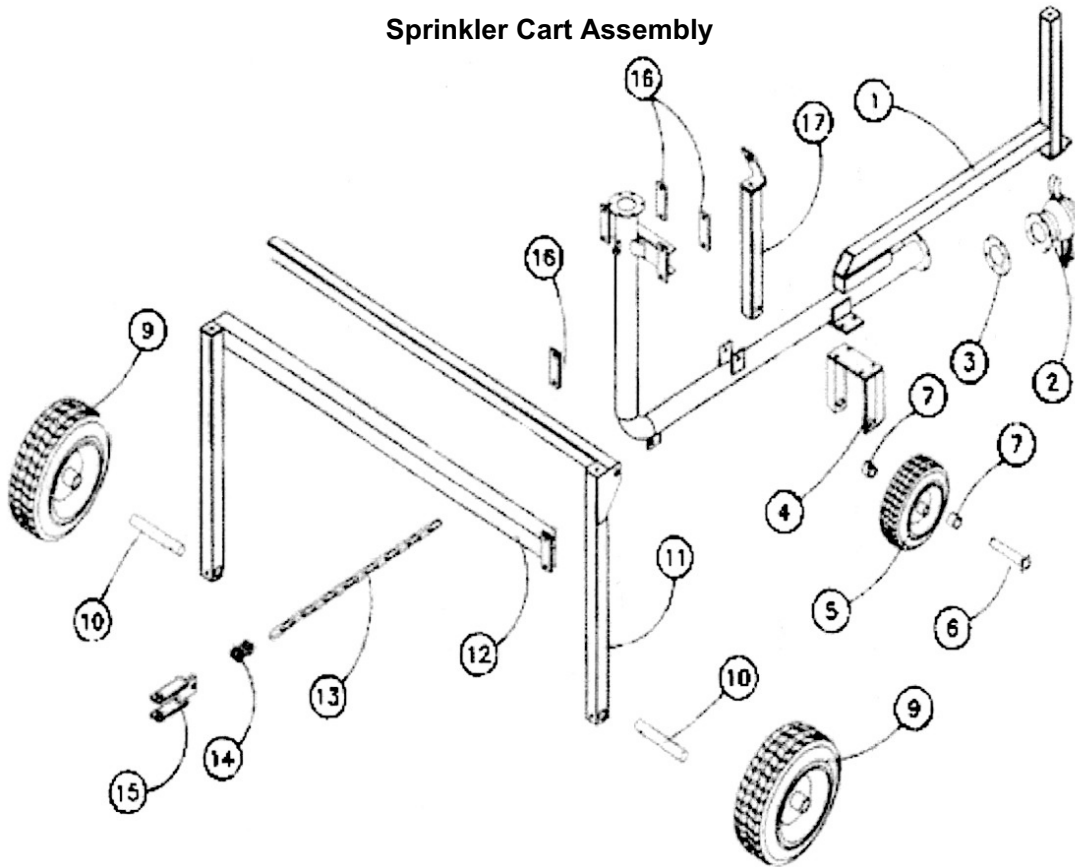
Gearbox			
No.	Part Number	Description	Qty.
1a	022-0439-1	Gearbox, 49.5 : 1 -----S/N 330,999-	1
1b	022-0816-0	Gearbox, 93 : 1 -----S/N 340,000+	1
2	022-0706-0	Body, Gearbox M1 93 to 1	1
3	022-0707-0	Cover, Gearbox M1 93 to 1	1
4	022-0641-0	Breather 1/4	1
5	022-0164-1	SHAFT, GEARBOX INPUT - 93-1 BOX	1
6	022-0165-0	Oil Retainer Dia. 20 x 47 x 7	1
7	022-0166-0	Stop Ring 147	1
8	022-0167-0	Bearing 6204 2RS	1
9	022-0168-0	Snap Ring E20	1
10	022-0169-0	Bearing, 6201	3
11	022-0170-0	Stop Ring 32	3
12	022-0171-0	Plug, Dia. 32mm	2
13	022-0174-0	Snap Ring E12	3
14	022-0172-0	Oil Retainer Dia. 12 x 32	1
15	022-0173-0	Shaft	1
16	022-0709-0	Shim, dia. 12 x .05	1
17	022-0176-0	Key 4 x 10	1

Gearbox -- 93:1



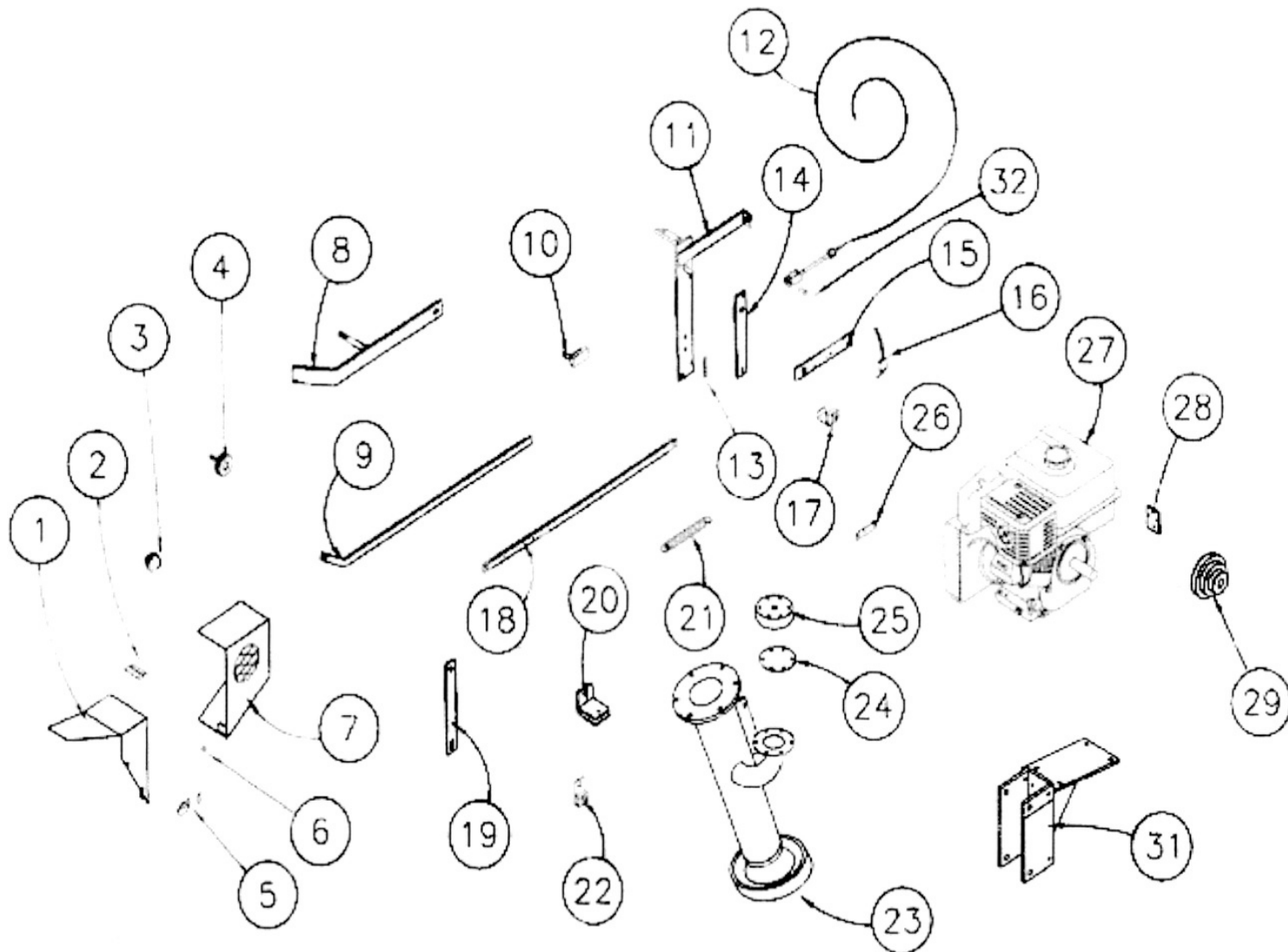
18	022-0710-0	Double, Pinion Z15 M1.5/Z150 M1	1
19	022-0180-0	Oil Retainer Dia. 25 x 62 x 7 mm	1
20	022-0181-0	Stop Ring i62	2
21	022-0182-0	Bearing, 6206	2
22	022-0183-0	Shim, sp:3	1
23	022-0712-0	Gear, Z111 M1.5	1
24	022-0711-0	Spacer, sp:19.5	1
25	022-0187-0	Snap Ring E30	1
26	022-0709-0	Key, 8x20	1
27	022-0179-0	Output Shaft	1
27A	022-1026-0	SHAFT ASSM R93 7-1/4" OAL	1
28	022-0195-0	Splined Pin	1
29	022-0193-0	Bearing Pins Dia 2 x 17.8	62
30	022-0190-0	Spacer Dia. 18 x 2.8	1
31	022-0189-0	Stop Ring E18	1
32	022-0191-0	Safety Key with Pin	1
33	022-0194-0	Spacer i22 x 3	1
34	022-0188-0	Plug, Dia. 62mm	1

Sprinkler Cart Assembly



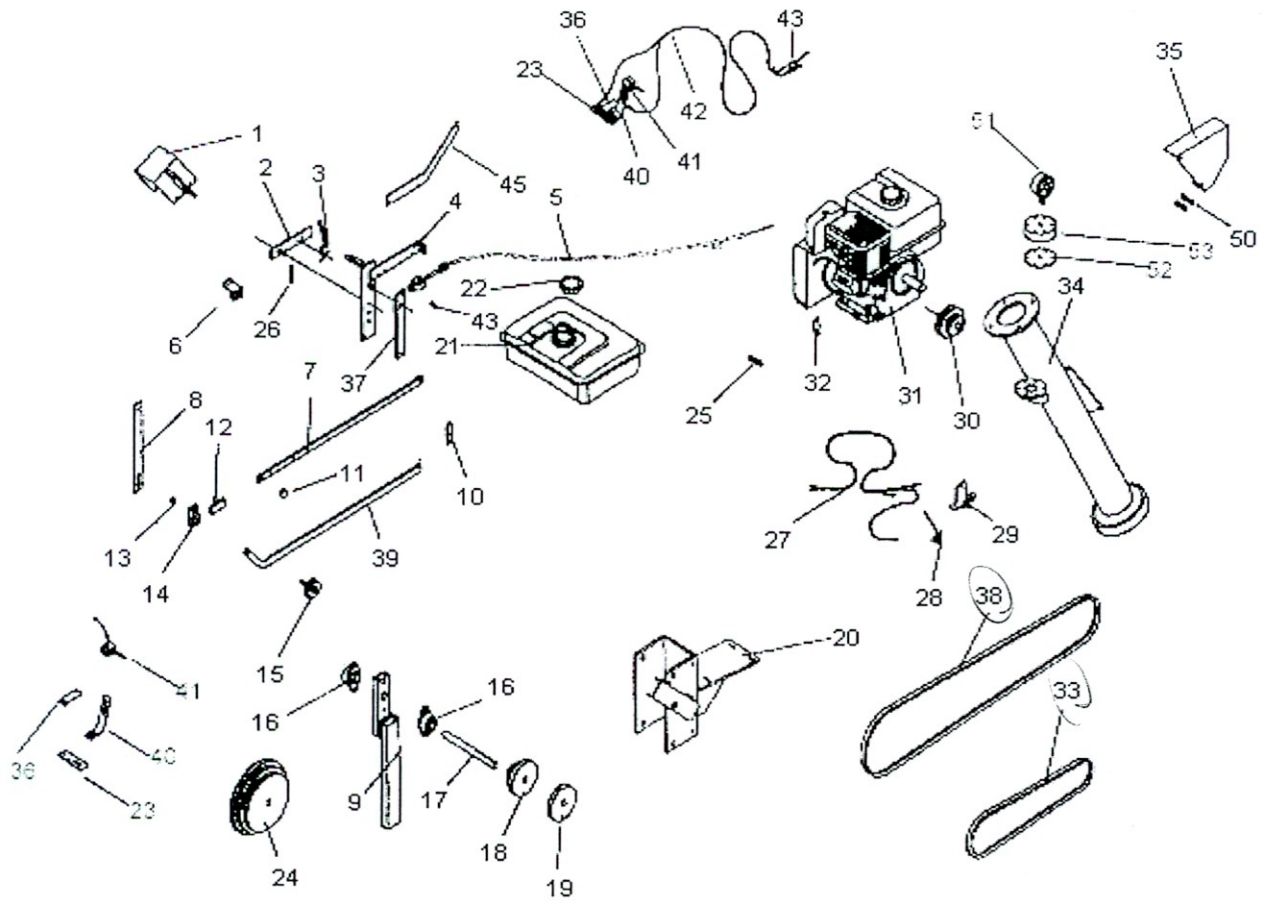
Sprinkler Cart Assembly				
No.	Part Number	Description	Qty.	
1	596-0267-0	Body Guncart 25	1	
2	596-0266-0	Flange & Ball	1	
3	597-0131-0	Gasket, 6 Hole 4" BCD	1	
4	588-0148-1	Yoke	1	
5	586-0811-0	Wheel & Tire, 4:1 x 3:5 x 4 1B2P	1	
6a	586-0899-0	Axle, Front	1	
6b		Grease Zerk 1/8MNPT (Not Shown)		
7	586-0844-0	Spacer	2	
9a	58602291	Wheel & Tire, 5:7 x 5 x 8B1.25 4Ply.	2	
9b	586-0229-4	Wheel & Tire, 4:80X12 Galv. (Not shown A1 3")	2	
10a	595-0428-0	Spindle, Guncart	2	
10b		Grease Zerk 1/8MNPT (Not Shown)	3	
11	595-0429-0	Leg, Inner 25 Guncart	1	
12	595-0426-0	Leg, Outer 25 Guncart	1	
13	850-4060-0	Chain, 3/8" Proof Coil	Ft.	3
14	523-5394-1	Clevis, Dbl Cmb1 542-3301	2	
15	523-5421-0	Hitch, Chain	1	
16	587-0641-1	Strap	3	
17	594-0576-0	Bail, Lift	1	
19	500-0024-0	Flange Adapter 2" to Nelson 100 Gun	1	
20	599-0196-0	Weight Guncart (Not Shown A1 3")	2	
21	599-0207-0	Weight Holder (Not Shown A1 3")	2	
22	503-0134-0	A1 CART SHUT OFF EXTENSION (Not Shown)	1	

Engine Drive (early serial numbers)



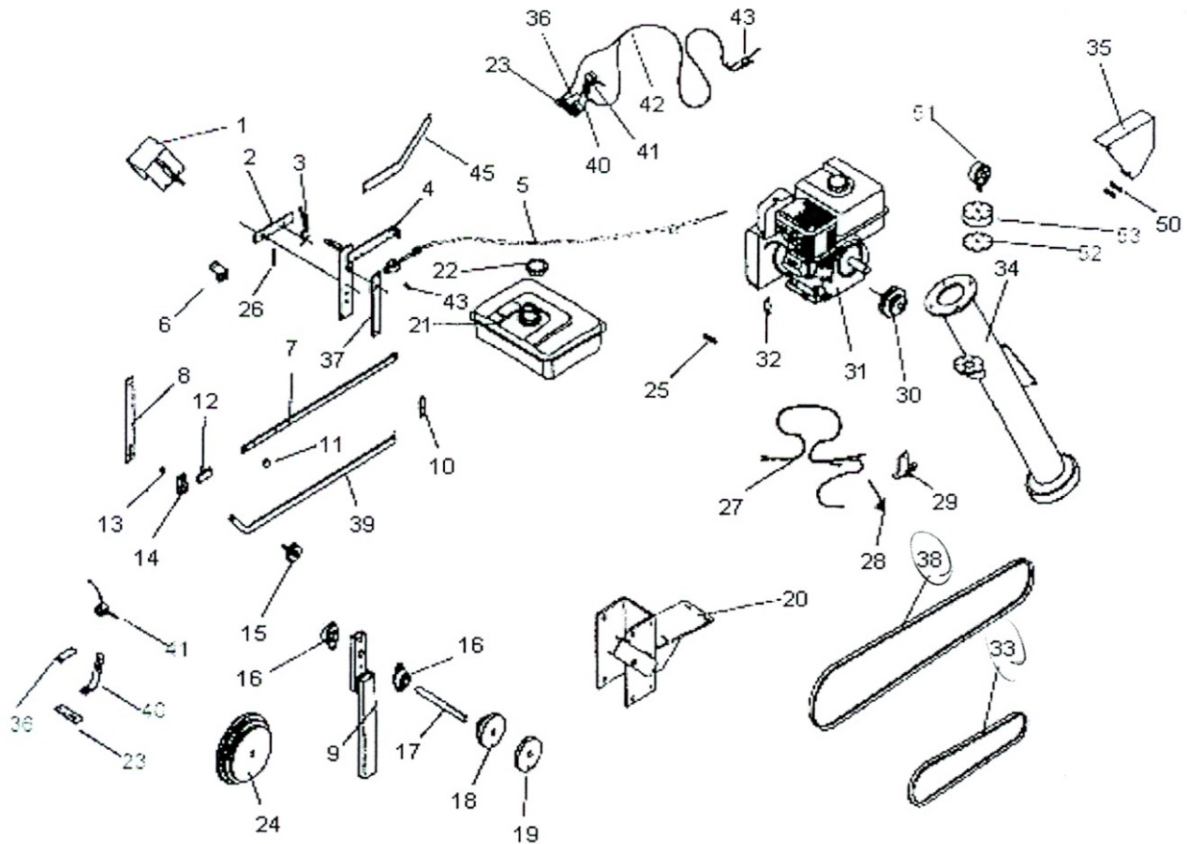
18	599-0028-0	Link, Throttle	1
19	599-0026-0	Backing Plate	1
20	598-0164-0	Crank Holer	1
21	450-3536-0	Spring, TNSN 1 x 6	1
22	599-0027-0	Swivel	1
23	599-0075-0	Entry Fitting 25 Engine	1
24a	587-0046-0	Diaphragm, Gauge Protector	1
24b	587-0224-1	Bolt, SS 1/4 x 1/34 (Not Shown)	6
24c	587-0225-0	Nut, SS 1/4"	6
24e	587-0226-0	Washer, Flat SS 1/4"	6
25	586-0690-1	Body Gauge Protector-Top	6
26	599-0066-0	Throttle Mount	1
27	598-0141-0	Engine, 4Hp Robin Keyed Shaft	1
28	599-0138-0	Switch Mount	1
29	599-0084-0	Pulley, 2"-3"-4" .75 Bore	1
30	599-0087-0	Belt, 4L48 Notched	1
31	599-0033-0	Engine Mount	1
32	595-0027-0	Pin, Clevis, 5/16 x 3/4 OAL	1

Engine Drive Assembly (later models)



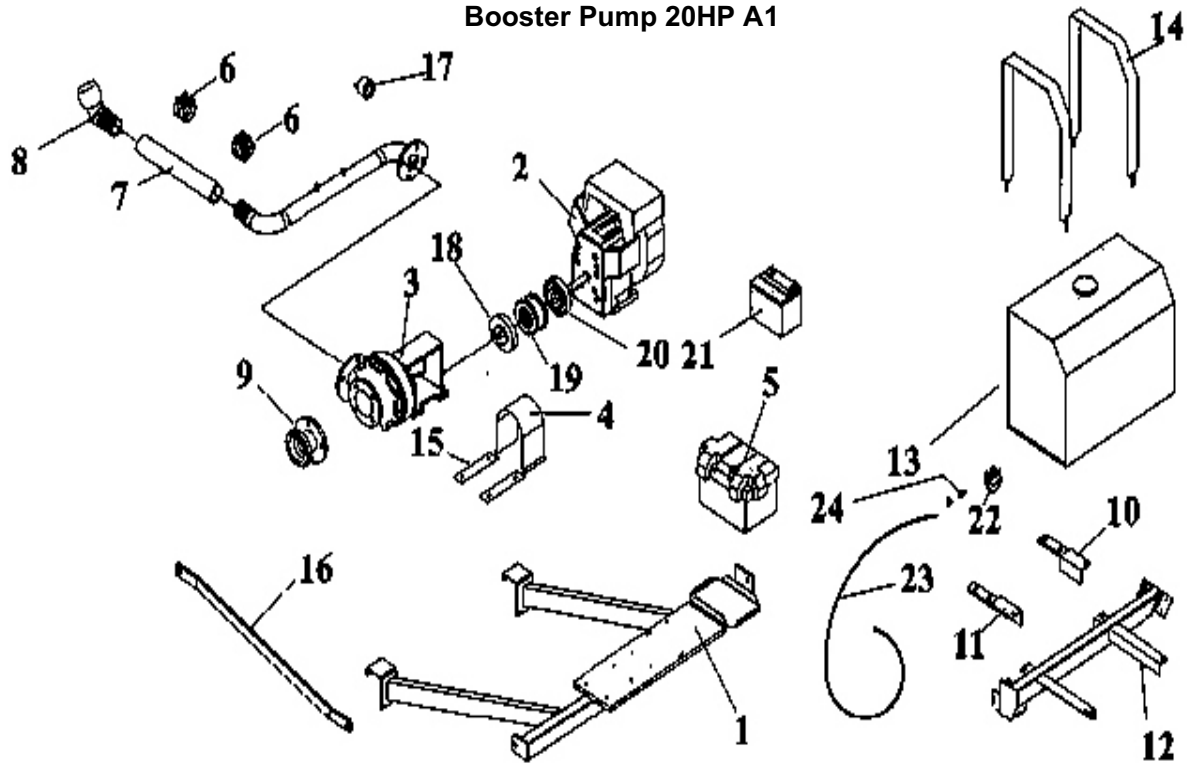
Engine Drive Assembly			
No.	Part Number	Description	Qty.
1	599-0194-0	Cradle Plate	1
2	599-0041-0	Switch Arm 30A	1
3	586-0075-0	Switch, Chery E/72-40H	1
4	599-0039-0	Throttle Brkt. 30A	1
5	599-0132-0	Throttle Control Cable	1
6	599-0043-0	Switch Ramp	1
7	599-0028-0	Throttle Link	1
8	599-0026-0	Backing Plate	1
9	599-0253-0	Jackshaft Mount	1
10	599-0066-0	Throttle Mount	1
11	302-4915-0	Ball Knob	1
12	599-0042-0	Slide, Switch	1
13	512-4847-0	Bushing, Stl .56 x .40 x .32L	1
14	599-0027-0	Swivel	1
15	526-5670-0	Knob, 3/8 x 1.0 Stud	1
16	599-0338-0	Bearing, 2 Hole Flange (Cast Iron Housing)	2
17	599-0277-0	Jack Shaft	1
18	599-0084-0	Pulley, 3 Step 2"-3"-4" 3/4" Bore	1
19	599-0341-0	Pulley, 3" x 3/4" Bore	2
20	599-0255-3	Engine Mount 30A	1

Engine Drive Assembly (later models)



21A	599-0219-1	Fuel Tank 4HP Robin	1
21B	599-0443-0	Fuel Tank 8HP Honda	1
22A	599-0221-0	Cap, Robin	1
22B	599-0221-1	Cap, Honda	1
23	599-0432-0	Plate	1
24	022-0593-0	Pulley, 100mm x 125mm x 147mm	1
25	450-4858-2	Spring, .5OD x 2 x .47	1
26	599-0422-0	Spring, .045"w x .38 OD x 2.5" Long	1
27	599-0324-0	Wire Harness A Series	1
28	599-0279-0	Switch, Robin Shut Off	1
29	599-0344-0	Switch Holder	1
30	599-0293-0	Pulley 2" 3/4" Bore	1
31A	598-0141-1	Engine, Robin 4HP	1
31B	584-0701-7	Engine, Honda 4HP	1
32	599-0265-0	Spring Holder	1
33	599-0342-0	Belt, AX24	1
34	599-0075-1	Entry Fitting A1	
35	599-0301-0	Shield	1
36	599-0429-0	Strap	1
37	599-0035-0	Throttle Pivot Arm	1
38	599-0343-0	Belt, AX42	1
39	599-0034-0	Link Shut Off	1
40	599-0424-0	Strap	1
41	599-0430-0	Switch Contact	1
42	599-0324-0	Wire Harness	1
43	599-0325-0	Connector	1

Booster Pump 20HP A1



Booster Pump 20 HP A1				
No.	Part Number	Description		Qty.
1	599-0469-1	Engine Base		1
2	598-0141-3	Engine, Robin 20.5 HP		1
3	586-0380-0	Pump, Pedestal A 2/50		1
4	599-0524-0	Shield		1
5	599-0531-0	Bat. Box, Champ 9-1765		1
6	030-1920-7	Supra Clamp 79mm-58mm		4
7	252-4962-2	Hose, IRR Supply 3"	Ft.	1.5
8	599-0334-1	Fitting, Discharge A1		1
9	599-0535-0	Fitting, Entry Booster Turbine		1
10	500-0379-0	Tank Brkt Ext. Rear		1
11	500-0396-0	Tank Brkt Ext. Front		1
12	599-0458-0	Tank Mount		1
13	599-0527-0	Tank, 30 Gal		1
14	599-0457-0	Tank Strap		2
15	599-0453-0	Shim		2
16	599-0460-1	Brace A1		2
17	910-3739-0	Gauge, Murphy 20HP 0-300		1
18	500-0780-0	Coupling, Half 75 x 1-1/8" Bore		1
19	500-0782-0	Coupling, 7JE Sleeve Center		1
20	500-0781-0	Coupling, Half 75 x 19mm Bore		1
21	599-0534-0	Battery, 12V 24 Series		1
22	277-4919-0	Filter, Glass Bowl Fuel		1
23	584-0695-1	Hose, Gas 1/4 x 27/64	Ft.	6.67
24	525-4876-0	Barb, Hose 1/8 Npt x 1/4		1