



**Turbine Drive Water-Reels®
Engine Drive Slurry-Reels**

T37A

E37A

Parts Manual

Serial No. 350,000 - 359,999



AG-RAIN®

700 S. Schrader Ave.
Havana, Illinois 62644
Phone: 309-543-4425
Fax: 309-543-4945

Water-Reel® Irrigation

PARTS MANUAL

Turbine/Engine Driven 37A

S/N 350,000-359,999

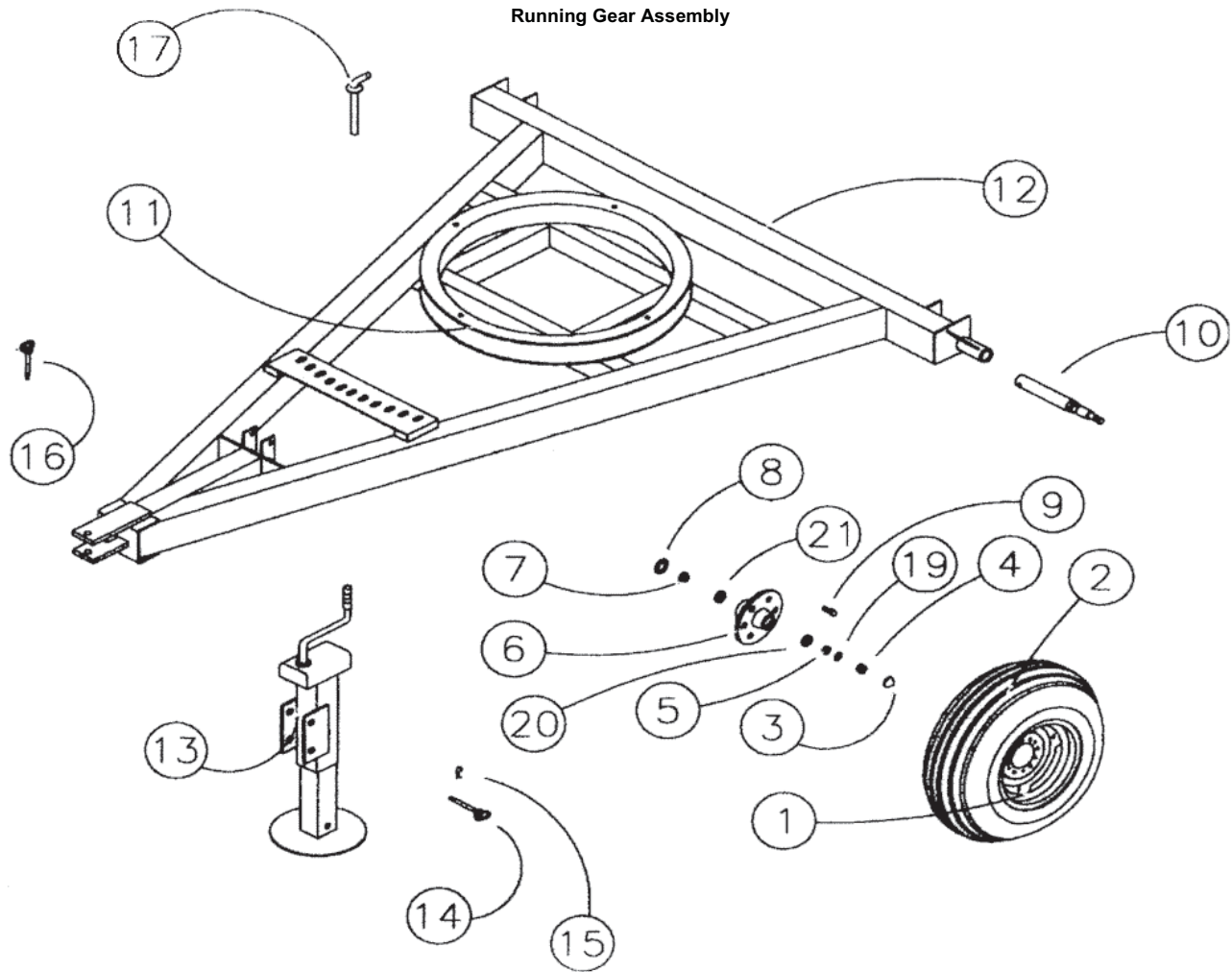
Assembly	Page
Running Gear Assembly	3
Cradle Assembly	4
Spool Assembly	5
Levelwind Assembly	6
Shut Off/Boom Assembly	7
Shield Group	8
Turbine Assembly	9-10
Gearbox	11-12
Drive Train Group	13-14
Sprinkler Cart Assembly	15-16
Decal Group	17
Engine Drive	18-19

Notes:

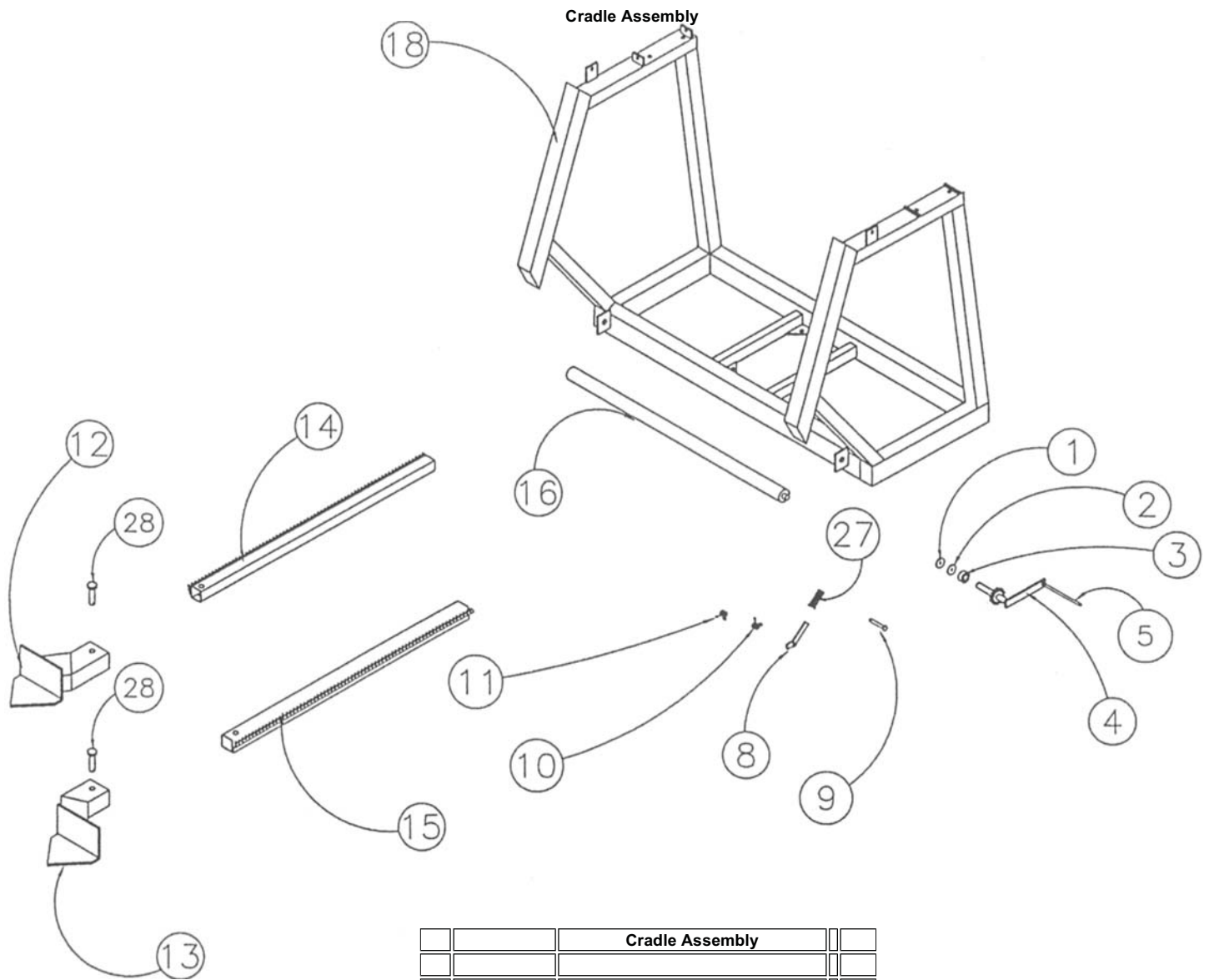
For Parts That Are Described As "Left" Or "Right" The Water Inlet Side Of The Machine Is Considered The Right Side.

Items Such As Common Fasteners, Grease Fitting, And Other Small Parts Easy To Acquire Locally Are Not Listed.

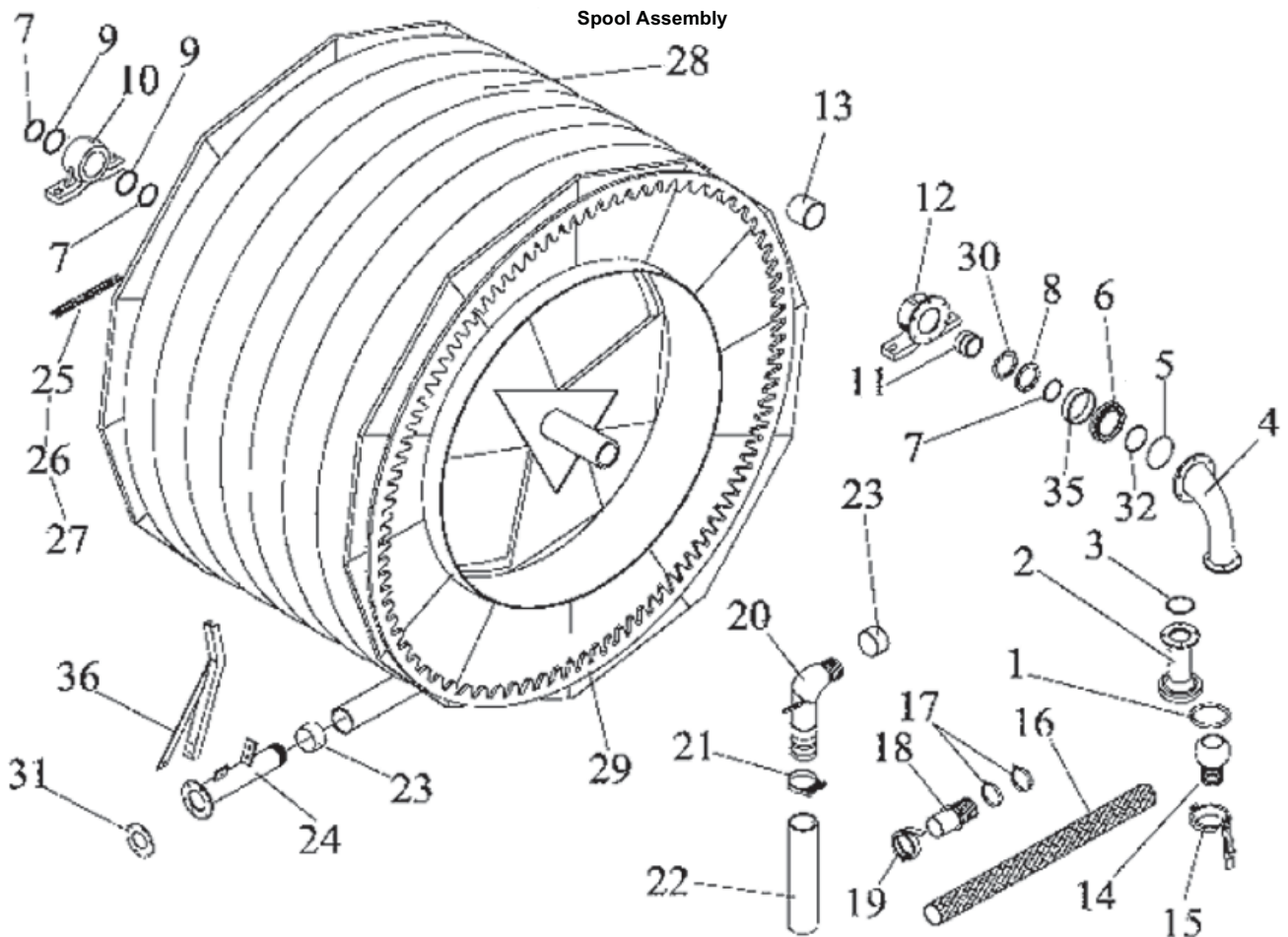
Running Gear Assembly



Running Gear Assembly			
No.	Part Number	Description	Qty.
1	526-5138-1	Wheel, 6 Bolt x 15" x 10"	2
2	526-5531-0	Tire , 11L x 15 12 Ply	2
3	588-0355-0	Cap, Wilton 909902 Hub	2
3A	589-0206-0	Cap, Hub Wilton 90903	2
4	589-0207-0	Nut, 7/8" NF Slotted Wilton 912952	2
5	515-0939-0	Bearing, Outer LM67048	2
5A	589-0204-0	Bearing, Outer LM25877	2
6A	588-0250-3	Hub, With Races Only, Wilton 280511	2
6B	588-0250-2	Hub Assembly (Hub, Bearings & Races)	2
6C	589-0199-0	Hub, with Races Only Wilton 280581	2
6D	226-1598-2	Hub, With Races, Brng, SI, and Hub Cap (Not Shown)	2
7	588-0355-4	Bearing, Inner LM48548	2
7B	589-0203-0	Bearing, Inner LM25590	2
8	588-0355-3	Seal, Grease CR15190	2
8B	589-0205-0	Seal, Grease CR20148	2
9	588-0355-5	Bolt, Lug 1/2-NF	12
9B	589-0202-0	Bolt, 9/16 Lug Wilton 9135381	12
10	500-0081-0	Spindle	2
11	020-9955-4	Bearing, Turntable	1
12	500-0006-0	Chassis	1
13	500-0023-1	Jack Assembly	1
14	558-3281-1	Pin, 3/4 x 4-1/8 Hitch	1
15	561-0204-0	Hair Pin	1
16	523-5866-0	Pin, 3/4 x 6-1/2 Hitch	1
17	595-0483-0	Pin, 3/4 x 5-3/4" Hitch	1
19	589-0208-0	Washer, Spindle 91307 Wilton	2
20	510-0940-0	Race, Outer LM67010	2
20B	589-0201-0	Race, Outer LM25821	2
21	510-0940-1	Race, Inner LM48510	2
21B	589-0200-0	Race, Inner LM25520	2

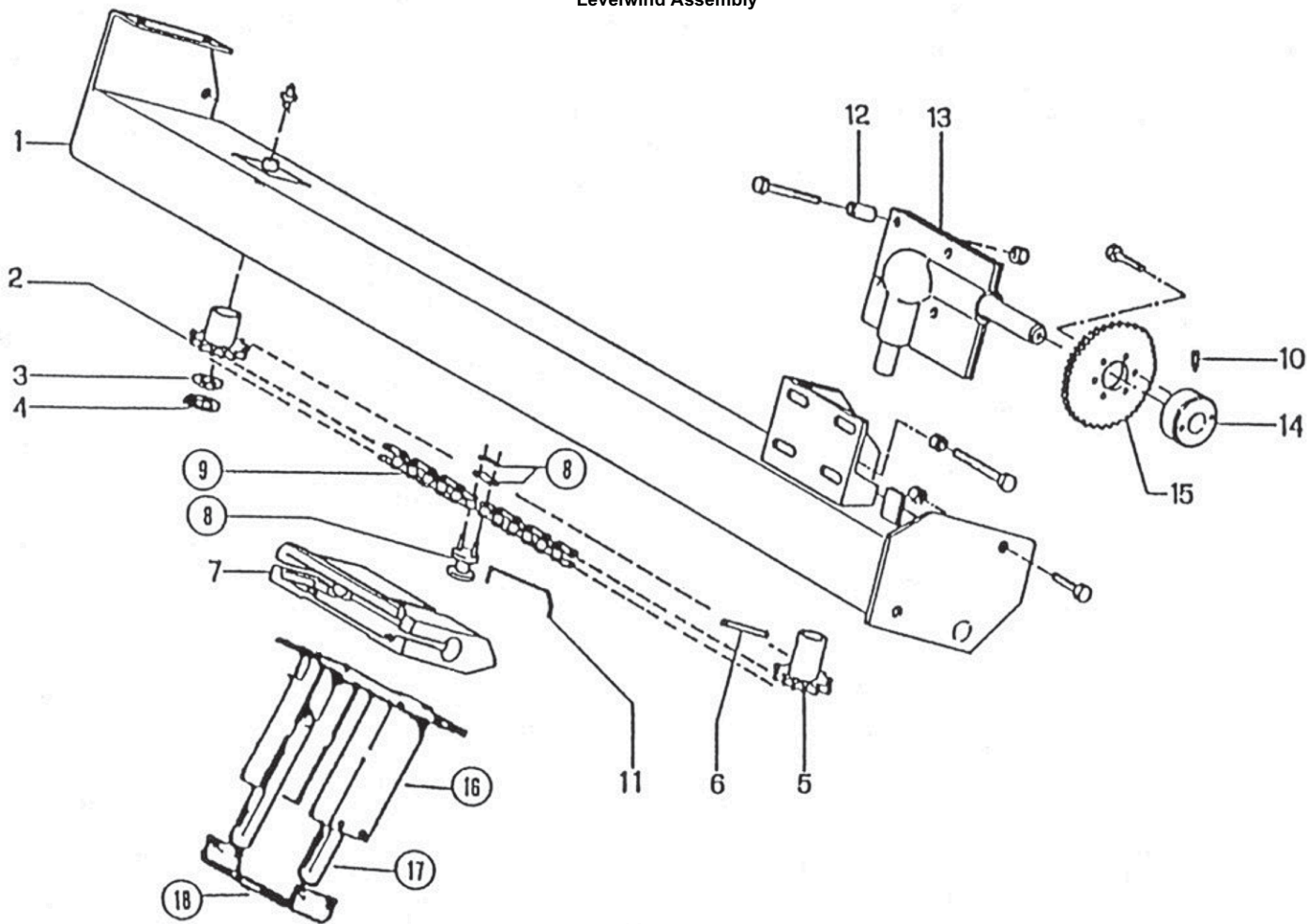


Cradle Assembly			
No.	Part Number	Description	Qty.
1	020-0256-9	Lock Nut	2
2	020-9905-8	Retaining Nut	2
3	020-9905-9	Spring, Rubber	2
4	595-0081-3	Crank	1
5	022-0007-0	Handle	1
8A	020-9902-7	Handle, Right	1
8B	021-9902-7	Handle, Left	1
9	022-0526-1	Pin 20mm x 110mm	1
10	020-9902-8	Spring, Right	1
11	020-9902-9	Spring, Left	1
12	022-0004-0	Stabilizer Foot, Left	1
13	022-0005-0	Stabilizer Foot, Right	1
14	022-0003-0	Stabilizer Leg, Left	1
15	022-0002-0	Stabilizer Leg, Right	1
16	020-0279-4	Roller, Horizontal (Base FG1 & FF1)	1
18	595-0325-8	Cradle, 37 Gear Drive	1
20	022-0156-0	Washer	2
27	022-0556-0	Hand Grip	2
28	020-9905-3	Pawl Holder Pin w/washer	2



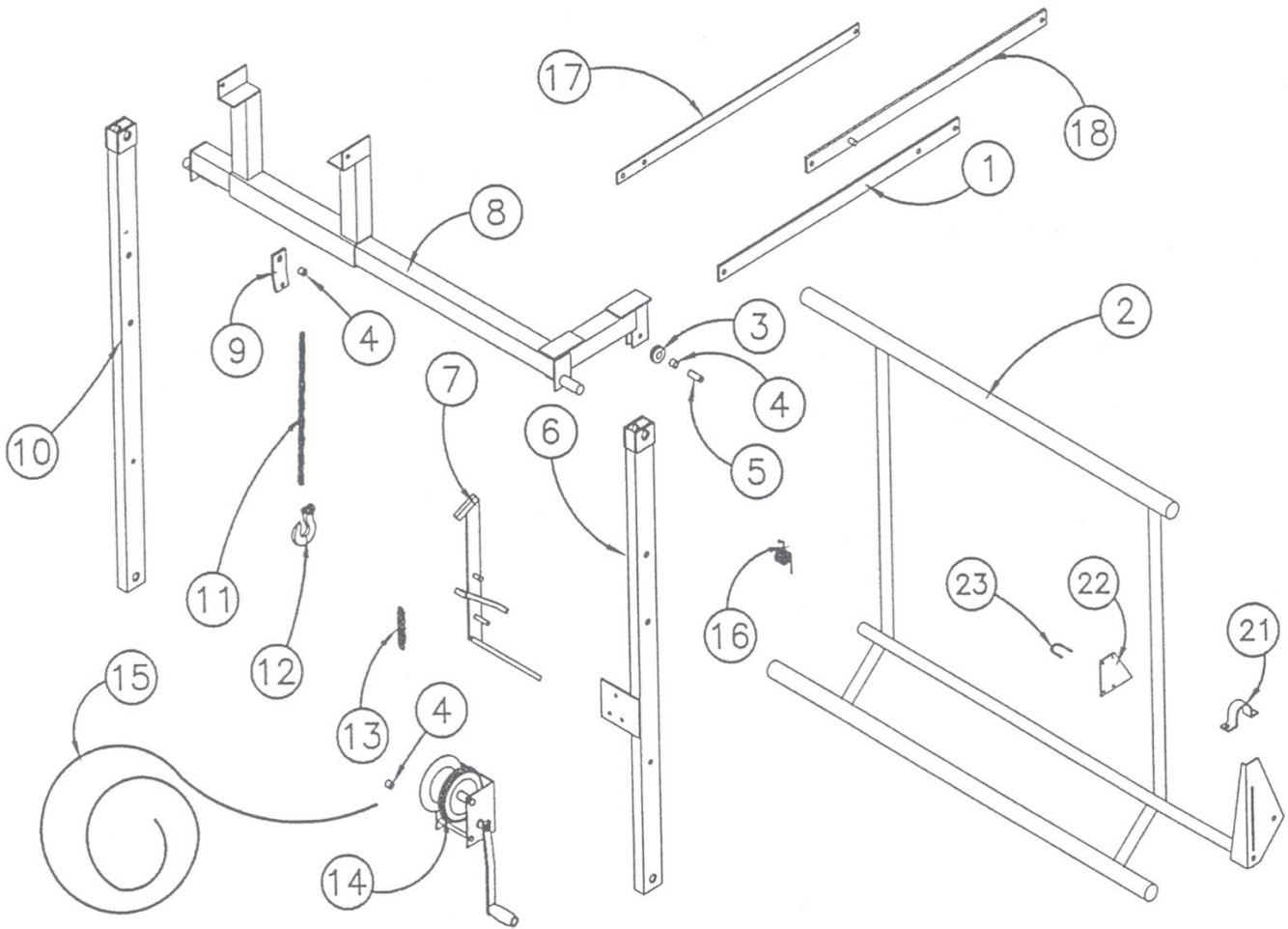
No.	Part Number	Description	Qty.
1	588-0223-3	O-Ring, 4"	1
2	022-0483-0	Entry Fitting	1
3	022-0484-0	O-Ring	2
4	022-0655-1	Upper Feeding Elbow 37	1
5	022-0486-1	O-Ring 6.012" OD x .139" CS	1
6	596-0369-1	Housing, Sealing 37	1
7	022-0008-0	Snap Ring	3
8	022-0009-0	Washer, Thrust	1
9	022-0038-1	Spacer	2
10	022-0015-0	Bearing, Spool	1
11	593-0245-0	Ring Nut, Slip Joint	1
12	022-0013-0	Bearing	1
13	022-0487-1	Sleeve (FF1)	1
14	588-0256-1	Hose End Outlet 4" Ball	1
15	588-0023-1	Lever Ring 4" 451 108mm	1
16	252-4962-0	Hose, IRR Supply 4"	Ft. 30
17	030-1924-0	Clamp, Supra 104-112	4
18	588-0266-0	Hose End Inlet 4" Ringlock	1
19	400-4927-0	Band, Ring Lock "	1
20	020-0310-7	Elbow, PE Tube	1
21	030-1925-8	Clamp, Supra 112mm -121mm	4
22	020-9911-1	Hose	1
23	020-9911-5	Hose Band	2
24	022-0740-1	TUBE END, 37, SHUT OFF	1
25	020-0114-0	Chain, 1/2" Pitch	Ft. 14
26	022-0111-0	Link, Connector 1/2" Pitch	1
27	022-0110-0	Link, Offset 1/2" Pitch	1
28	584-0173-1	Tube, PE 110mm x 3.7 ID x 1110 Ft. (Standard)	1
29	022-0458-1	Spool, Base FF1 Gear Drive	1
30	022-0010-0	Washer, Wear	1
31	020-9920-2	Gasket	1
32	022-0842-0	O-Ring 4-3/4 x 4-1/4 x 1/4	1
35	022-0754-1	SPACER FF1, AR6, AR7	1
36	022-1784-4	STOP BAR 110MM	1

Levelwind Assembly



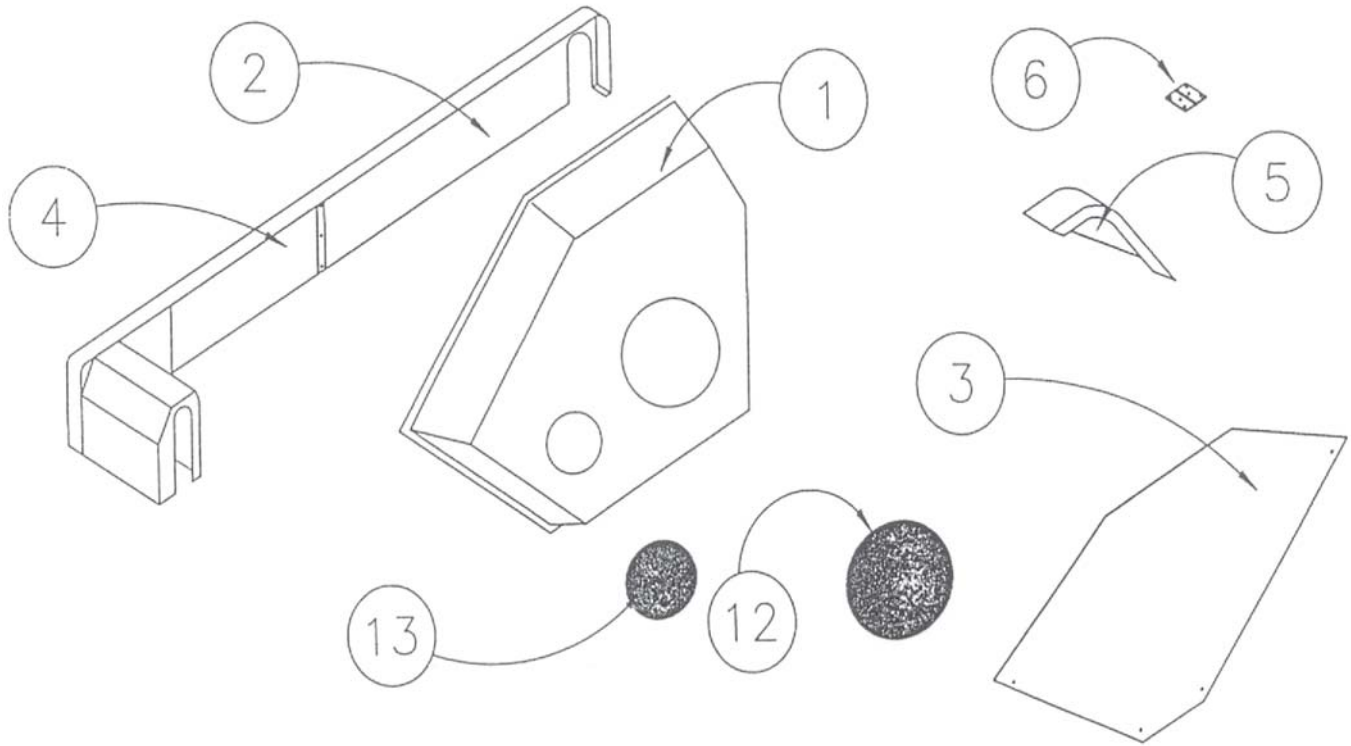
Levelwind Assembly			
No.	Part Number	Description	Qty.
1	022-0016-0	Frame, Levewind (Base FF1)	1
2	020-9914-8	Sprocket, 10 Tooth Idler	1
3	553-0628-0	Spacer, 1 1/2 x 1 x 18 GA	1
4	526-6254-0	Snap Ring	1
5	022-0018-0	Sprocket, 10 Tooth Driver	1
6	589-0214-0	Spring Pin, 7mm x 45mm	1
7	020-0014-1	Fork Support	1
8	020-9914-3	Guide Link	1
9	020-0486-5	Chain, 1/2" x 112 Rollers (Base FF1)	1
10	020-0015-2	Set Screw	1
11	020-0077-6	Retaining Clip	1
12	022-0020-0	Spacer	1
13	020-0108-5	Gearbox	1
14	020-0015-3	Hub, Sprocket	2
15	020-9915-8	Sprocket, 1/2 Pitch x 36 Teeth	1
16	020-0415-9	Fork	1
17	020-0486-1	Roller, Vertical	2
18	592-0274-0	Tube Retainer	1
19	022-0104-0	Lvl Wnd Assm. Cmpl't w/o # 16,17,18 (Not Shown)	1

Shut off / Boom



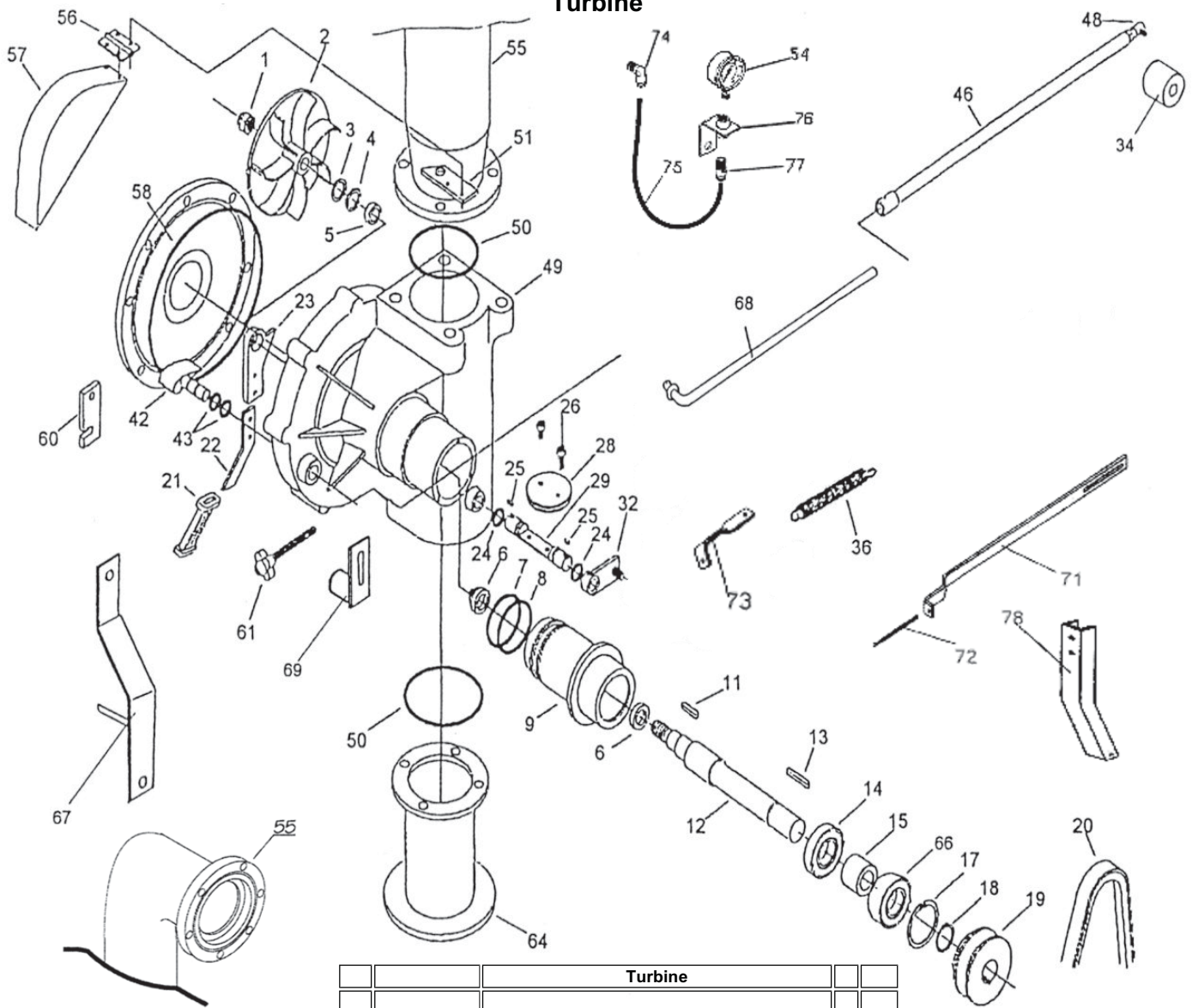
No.	Part Number	Description	Qty.
1	595-0067-0	Brace, Boom	2
2	022-0493-1	Shut Off Bar FF1	1
3	402-4906-0	Pulley, WRP 17/32	1
4	325-5191-0	Bushing, .84 x .56 x .62 Long	4
5	595-0054-0	Bushing, 3/4 x .51 x 1.75	1
6	594-0339-1	Arm, Lift Right	1
7	594-0476-0	Boom, Catch	1
8	594-0349-1	Boom, Lift Assembly	1
9	595-0073-0	Link, Boom Chain	2
10	594-0336-1	Arm, Lift Left	1
11	850-4060-0	Chain, 3/8 Proof Coil 21 Links	Ft. 1.8
12	523-5565-0	Hook, Clevis Slip	2
13	450-3536-0	Spring, TNSN. 1 x 6	1
14	400-4855-1	Winch, Fulton K1550	1
15	750-4844-0	Cable, 1/4-7 x 19 GAL	Ft. 12
16	020-0016-6	Spring	1
17	595-0069-0	Transport Strap	2
18	595-0068-0	Brace	2
20	022-0163-1	Cap Plug (Not Shown)	4
21	022-0061-1	Retainer	1
22	597-0342-0	Comp. Stop	1
23	022-0665-0	U-Bolt	2

Shield Group

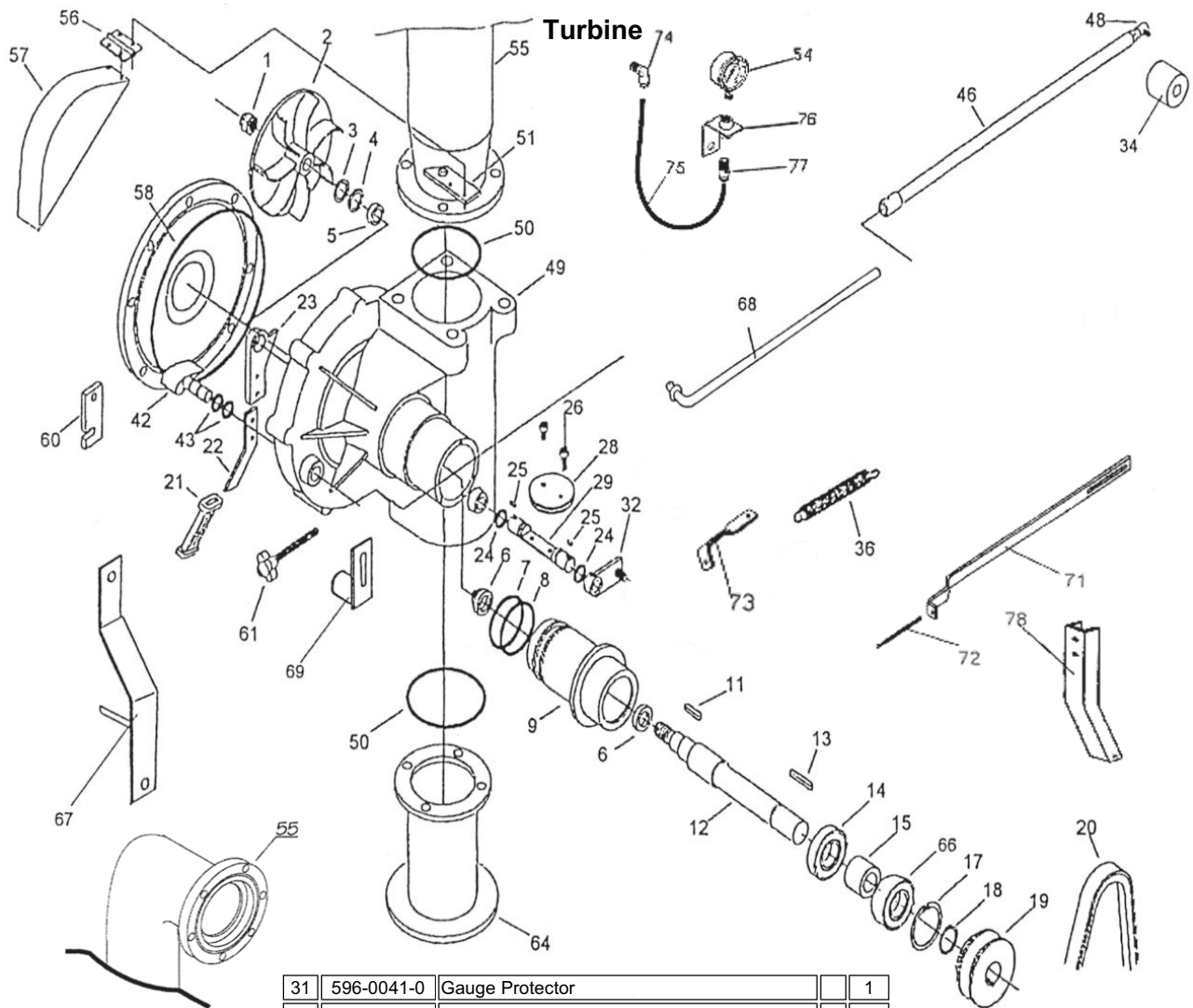


Shield Group			
No.	Part Number	Description	Qty.
1	022-0538-1	Hood	1
2	022-0123-2	Guard, Levewind Top - FG1	1
3	593-0039-1	Shield, 37A Spool	6
4	022-0122-0	Shield Levelwind	1
5	022-0388-0	Shield, Belt	1
6	022-0389-0	Hinge	1
12	022-0539-0	Door	1
13	022-0540-0	Door	1
14	597-0281-0	Rubber Latch (Not Shown)	3

Turbine

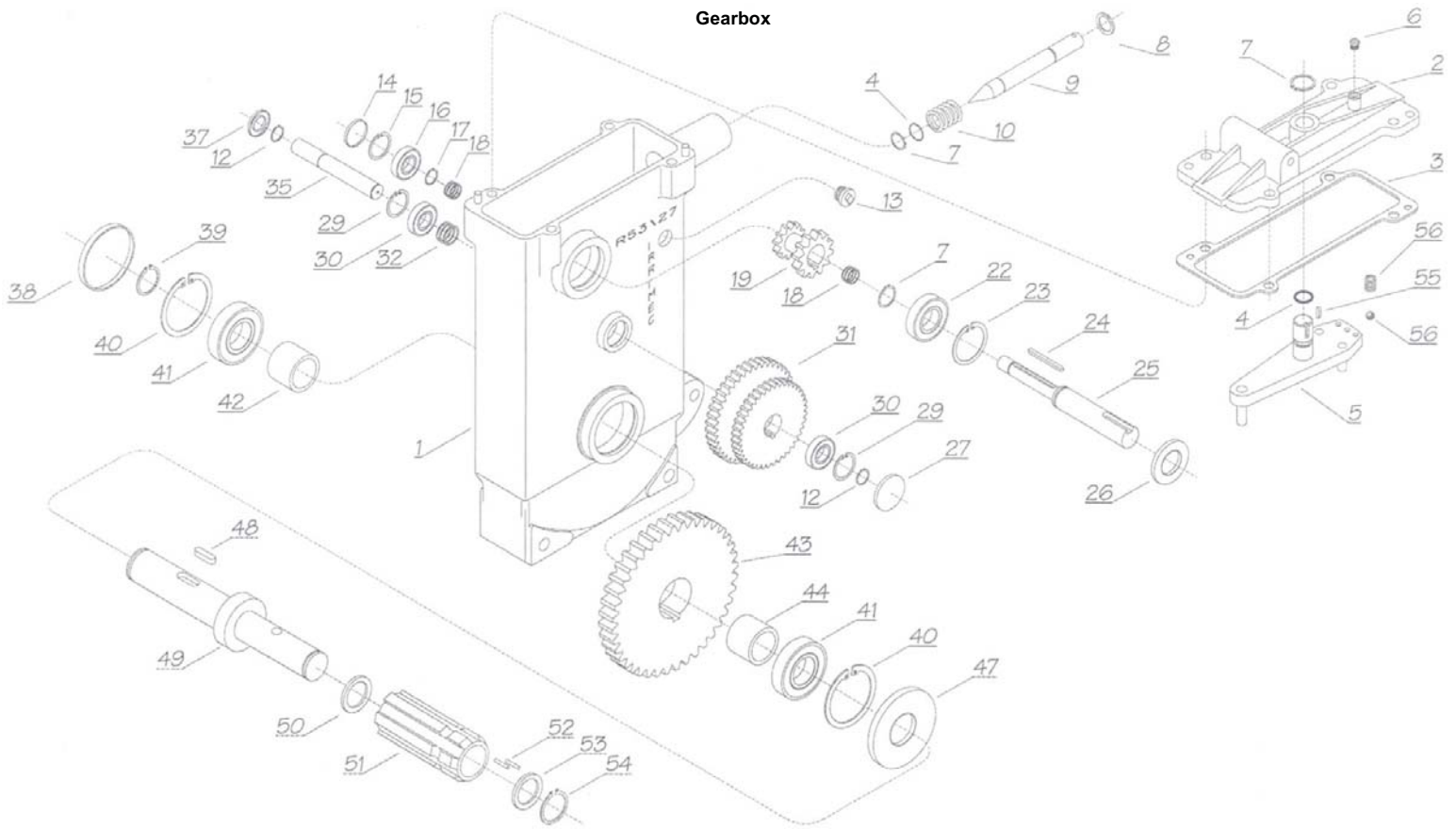


No.	Part Number	Description	Qty.
1	022-0198-0	Nut, Self Locking Thin 14 x 1.5mm	1
2	022-0199-3	Impeller 6.77 OD x .87 Vane Height	1
3	022-0543-0	Spacer Mylar, .039" Thick	2
4	022-0300-2	Spacer, 15mm (.6" Long)	1
5	022-0544-0	Spacer, .984" OD x .787" ID x .197" Thick	1
6	022-0545-0	Seal 20 x 6	1
7	022-0546-0	O-Ring 2.30" ID x .103"C/S	1
8	022-0546-1	O-Ring 2.362" ID x .103"C/S	1
9	022-0548-0	Turbine Housing T200	1
111	022-0337-0	Key, 5mm x 5mm x 10mm Long	1
12	022-0550-0	Impeller Shaft	1
13	022-0551-0	Key 6 x 50	1
14	022-0167-0	Bearing, 6204 2RS	1
15	022-0552-1	Spacer, 1.8" Long	1
17	022-0324-0	Retaining Ring i47	1
18	022-0323-0	Retaining Ring E20	1
19	022-0592-0	Pulley Three Step	1
20	500-0154-0	Belt A89	1
21	022-0566-0	Hand Grip	1
22	022-0557-0	Plate By-Pass Lever	1
23	022-0558-0	Lever	1
24	022-0559-0	O-Ring 120 15,54 x 2.62	2
25	022-0319-0	Key, 6mm x 6mm x 10mm Long	2
26	022-0305-0	Screw, 6 x 16 Inox	2
28	022-0562-0	Disc, By-Pass	1
29	022-0563-2	By-Pass Shaft	1



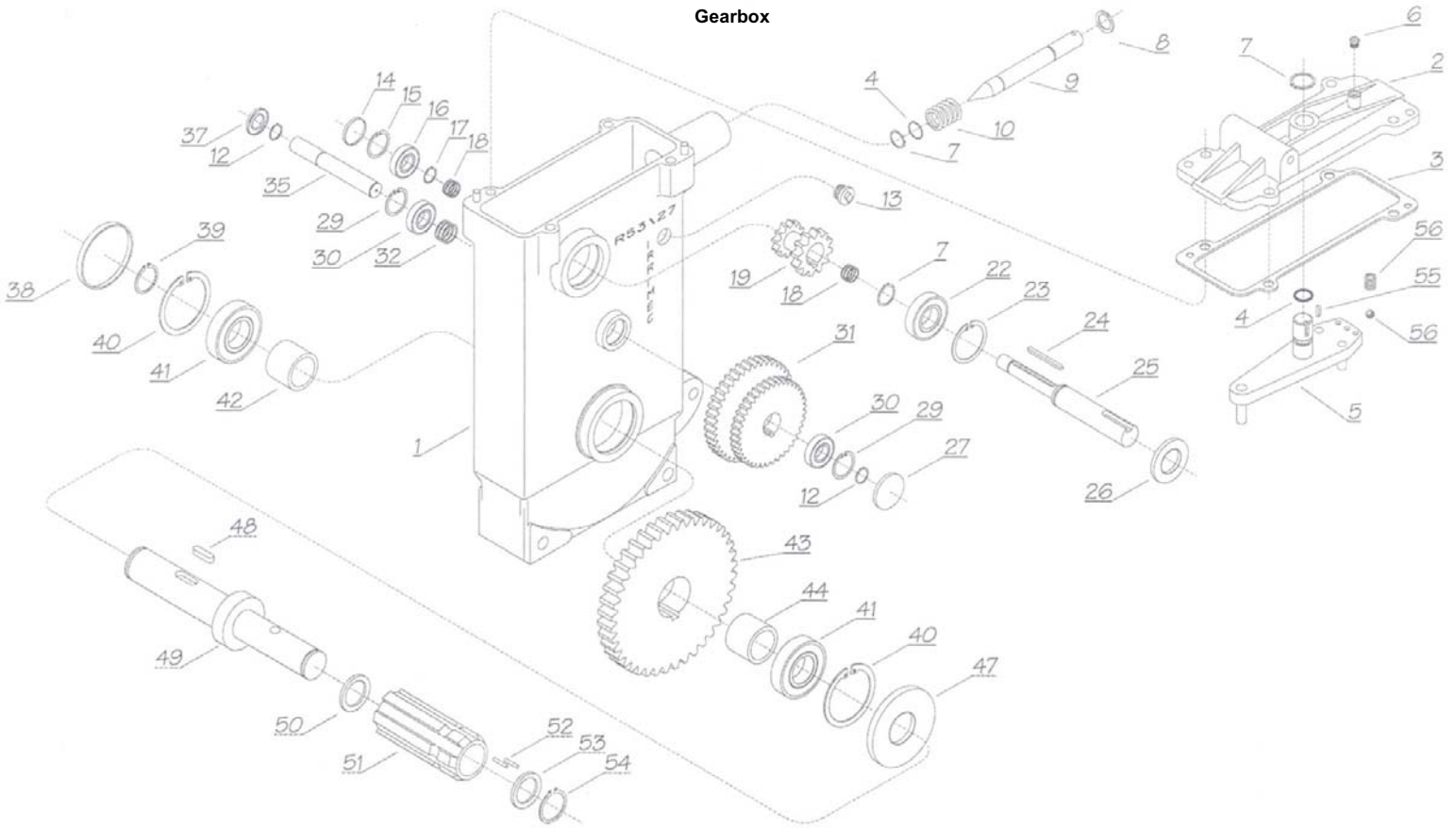
31	596-0041-0	Gauge Protector		1
32	022-0564-0	By-Pass Lever		1
34	022-0660-0	Spacer 1" OD x 2.4" Long x 8mm Threads		1
36	022-0318-0	Spring		1
42	022-0566-0	Regulator Flap with Pin		1
43	022-0331-0	O-ring		2
46	022-0569-1	By-Pass rod		1
48	022-0341-0	Rod End		1
49	022-0302-1	Turbine Body		1
50	022-0484-0	O-Ring		2
51	022-0571-0	Support		1
54	586-0675-0	Gauge 0-300		1
55	022-0655-0	Elbow, Upper 40		1
56	022-0389-0	Hinge		1
57	022-0388-0	Shield, Belt		1
58	022-0572-0	O-Ring i286 x 3.53		1
60	022-0573-0	Stop Plate		1
61	022-0391-0	Knob		1
64	022-0483-0	FITTING, ENTRY - 25/120 TURBINE		1
65	990-7030-0	Overhaul it Runner Shaft. 25/120(Not Shown)		1
66	022-0167-1	Bearing, 5204 2RS		1
67	022-0648-0	Arm, Comp		1
68	022-0649-1	Link, Comp		1
69	022-0650-0	Loop, Comp		1
71	022-0794-0	Bar, Shut Off		1
72	022-0795-0	Stud, All Thread		1
73	022-0796-0	Bracket, Spring		1
74	525-4915-2	Ftg, TB 90 Deg. 1/4"MNPT x 5/16" Tube		1
75	252-4939-2	Tube, Synflex 5/16"	Ft.	2
76	599-0148-0	Gauge Mount		1
77	525-4915-4	Ftg, TB Straight 1/4" MNPT x 5/16" Tube		1
78	022-0797-0	Arm Clutch Disengage		1

Gearbox



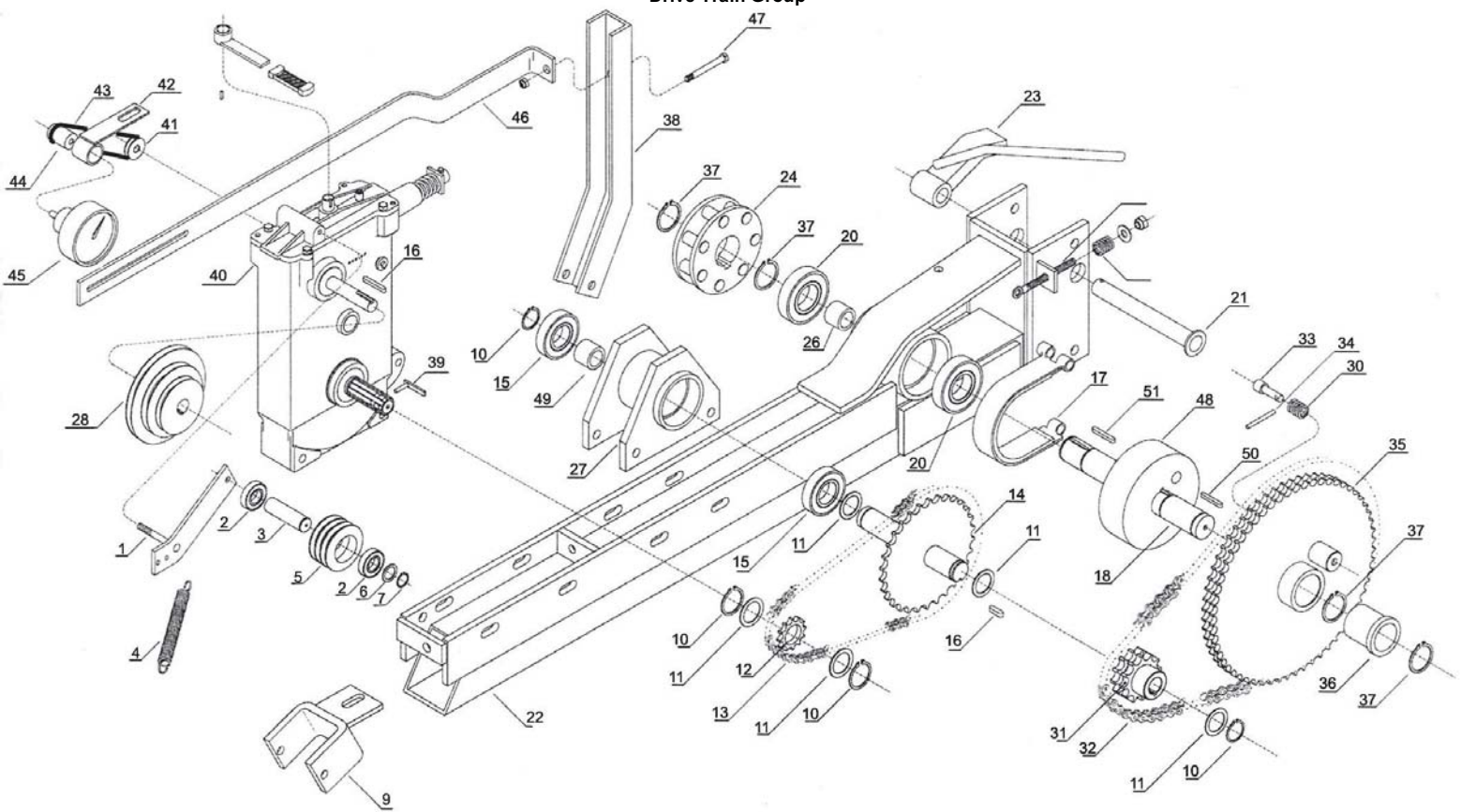
No.	Part Number	Description	Qty.
1	022-0765-0	Gearbox Body	1
2	022-0766-0	Gearbox Cover	1
3	022-0767-0	Gasket	1
4	022-0559-0	O-Ring 20.78mm OD x 2.62mm Cross Section	2
5	022-0768-0	Clutch Rod	1
6	022-0769-0	Breather	1
7	022-0168-0	Snap Ring E20	3
8		Washer	1
9	022-0770-0	Clutch Pin	1
10	022-0771-0	Spring f.2,5 L.34 dia. 29,5	1
12	022-0131-0	Snap Ring E15	2
13		Plug 1/2"	1
14	022-0171-0	Plug 32 x 7	1
15	022-0170-0	Snap Ring i32	1
16	022-0169-0	Bearing 6201	1
17	022-0174-0	Snap Ring E12	1
18	022-0772-0	Shim	
19	022-0773-0	Clutch Pinion Z28 M1,5-Z16 M1,5	1
22	022-0167-0	Bearing 5204 2RS	1
23	022-0166-0	Snap Ring i47	1
24	022-0774-0	Key 4x	1
25	022-0775-0	Inlet Shaft	1
26	022-0165-0	Seal, 20mm x 47mm x 7mm	1
27	022-0776-0	Plug 35 x 8	1
29	022-0777-0	Snap Ring i35	2
30	022-0778-0	Bearing 6202	2
31	022-0779-0	Pinion Z118 M1,5-Z106 M1,5-Z13 M2	1
32	022-0780-0	Shim	
35	022-0781-0	Middle Shaft	1
37	022-0782-0	Oil Seal 35mm x 15mm x 7mm	1
38	022-0624-0	Plug 62 x 10	1
39	022-0187-0	Snap Ring E30	1
40	022-0181-0	Snap Ring i62	2
41	022-0182-0	Bearing 6206 (no seals)	2

Gearbox



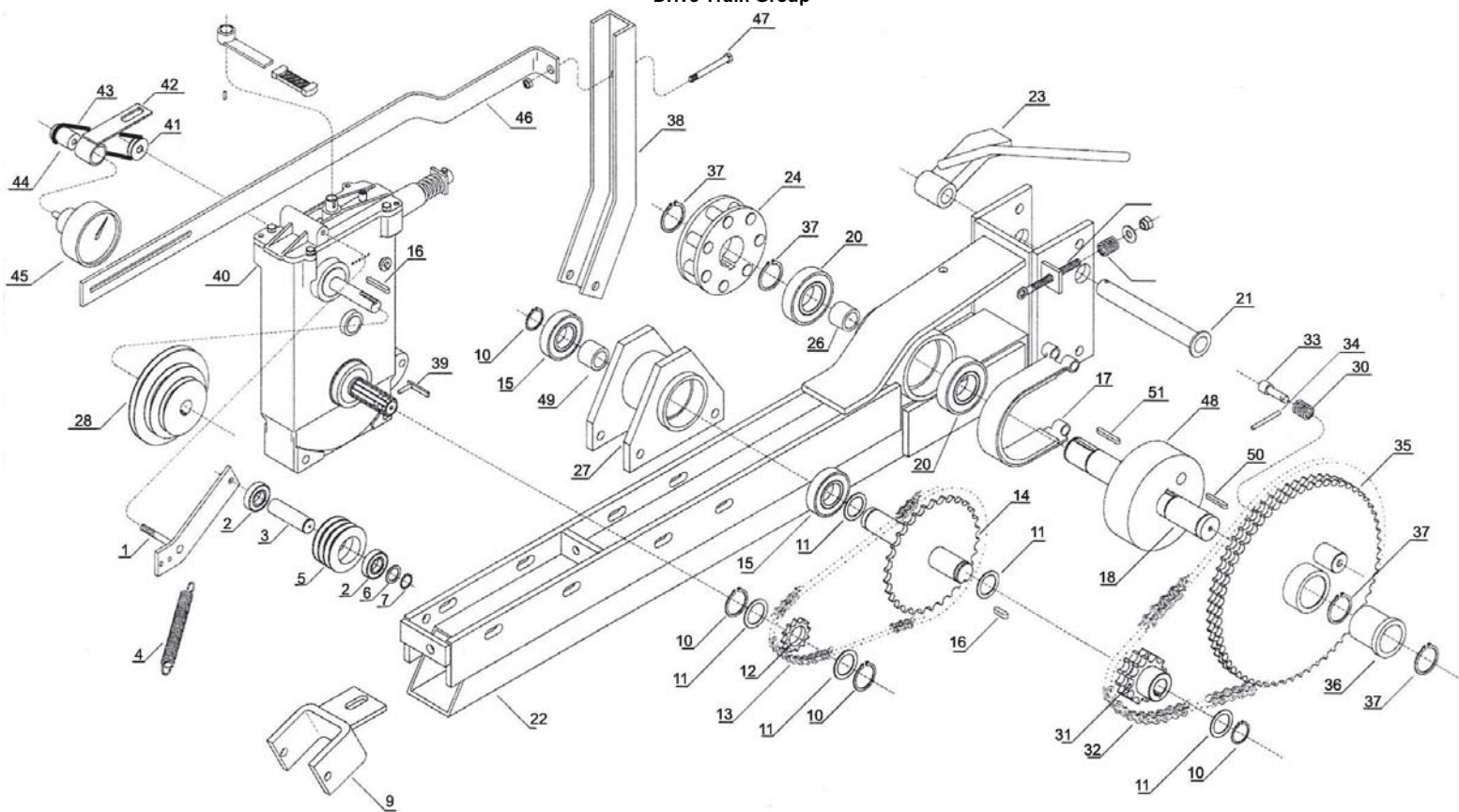
42	022-0784-0	Spacer		
43	022-0785-0	Pinion Z94 M2		1
44	022-0786-0	Spacer		
47	022-0180-0	Oil Retainer 62 x 35 x 7		1
48	022-0788-0	Key 8 x 7 x 25		1
49	022-0790-0	Shaft		1
50	022-0194-0	Spacer 22 x 3		1
51	022-0195-0	Pin, Splined		1
52	022-0193-0	Pin, bearing 2 x 17.8		62
53	022-0190-0	Spacer Dia 18 x 2.8		1
54	022-0189-0	Ring, Stop		1
55	022-0549-0	Key 6 x 6 x 25		1
56	022-0791-0	Ball		1
	022-1026-1	Shaft Assm. R53/27 Complete		1
	500-0470-0	Shut Off Cable Kit (Not Shown- Turbine Drives Only)		1

Drive Train Group



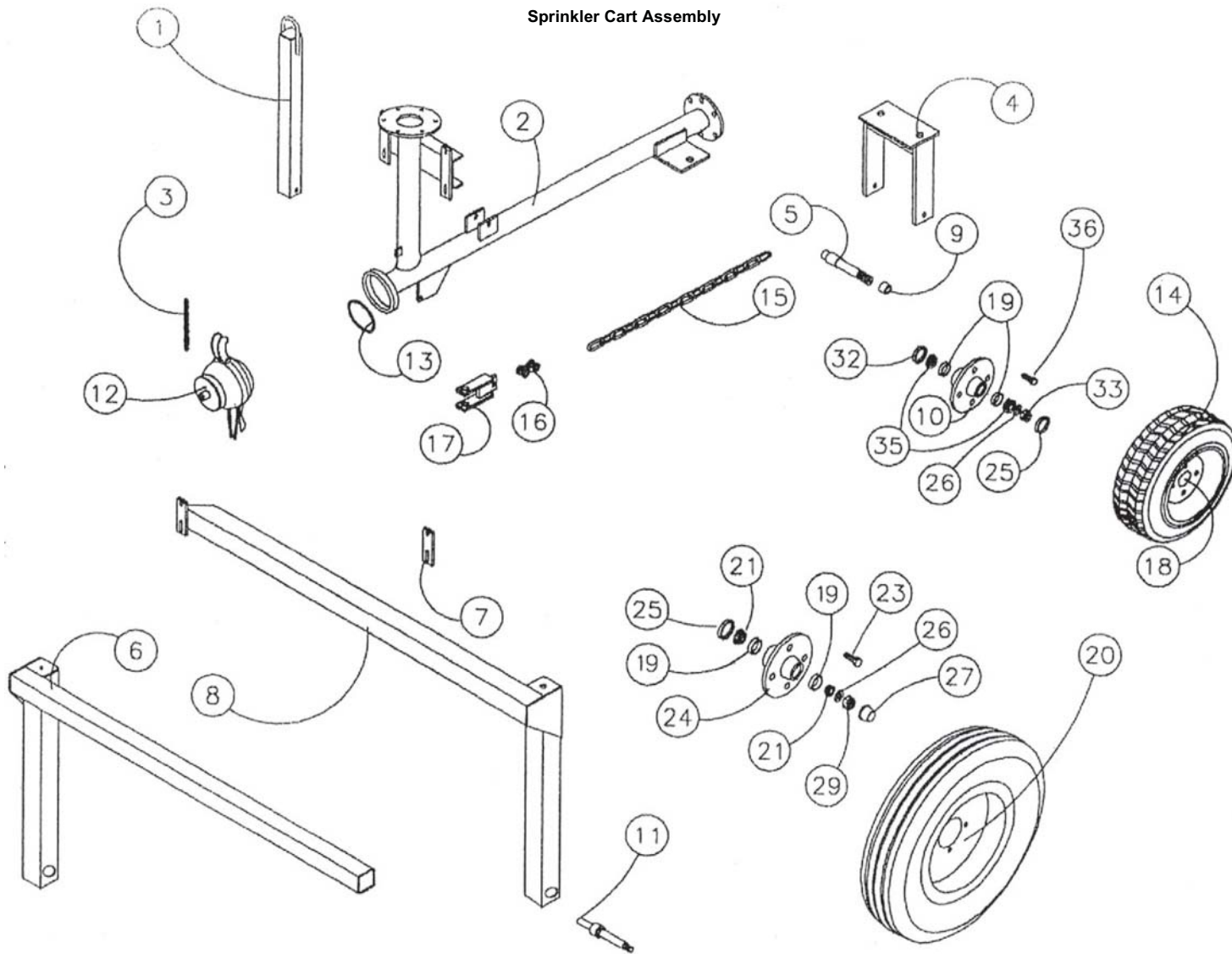
No.	Part Number	Description	Qty.
1	022-0811-0	Idler Arm	1
2	022-0344-0	Bearing, 6005 2RS	2
3	022-0653-0	Shaft Belt Idler	1
4	022-0318-0	Spring	1
5	022-0654-0	Pulley, Belt Idler 3 Groove	1
6	022-0812-0	Washer	
7	022-0342-0	Snap Ring E25	1
8	022-0810-0	Knob, Handle	1
9	022-0686-0	End Support	1
10	022-0534-0	Stop Ring E35	4
11	022-0535-0	Spacer, 1.765 x 1.385 x .038	1
12	022-0514-0	Sprocket, Z13	1
13	020-0114-1	Chain 5/8" (62 Rollers)	Ft. 3.23
14	022-7042-0	Sprocket, Z40 5/8	1
15	022-0353-0	Bearing, 6207 2RS	2
16	022-0551-0	Key, 6 x 50	1
17	022-0762-0	Brake Band	1
18	022-0804-1	Shaft	1
19	022-0611-0	Key, 12mm x 10mm x 50mm	1
20	022-0462-0	Bearing, 6208 - 2RS	2
21	022-0520-1	Pin, Non Return	1
22	022-0508-1	Mechanism Support	1
23	022-0521-1	Anti-Reverse Key	1
24	022-0505-1	Pinion	1
26	022-1469-0	Spacer Measures 42mm x 48mm x 63.5mm L	1
27	022-0503-0	Housing	1
28a	022-0593-0	PLY, 3 STEP 100, 125, 147	1
28b	022-0593-1	Pulley, 166mm x 191mm x 213mm 20mm bore (on engine drive)	
30	022-0347-0	Spring	1
31	022-0511-0	Pinion 3/4 Z13 Double	1
32	875-4847-3	Chain, Double Wide 3/4" (76 Pins)	Ft. 4.8
33	022-0349-0	Pin	1
34	022-0348-0	Pin	1
35	022-0496-1	Sprocket	1
36	022-0814-0	Bushing	1

Drive Train Group



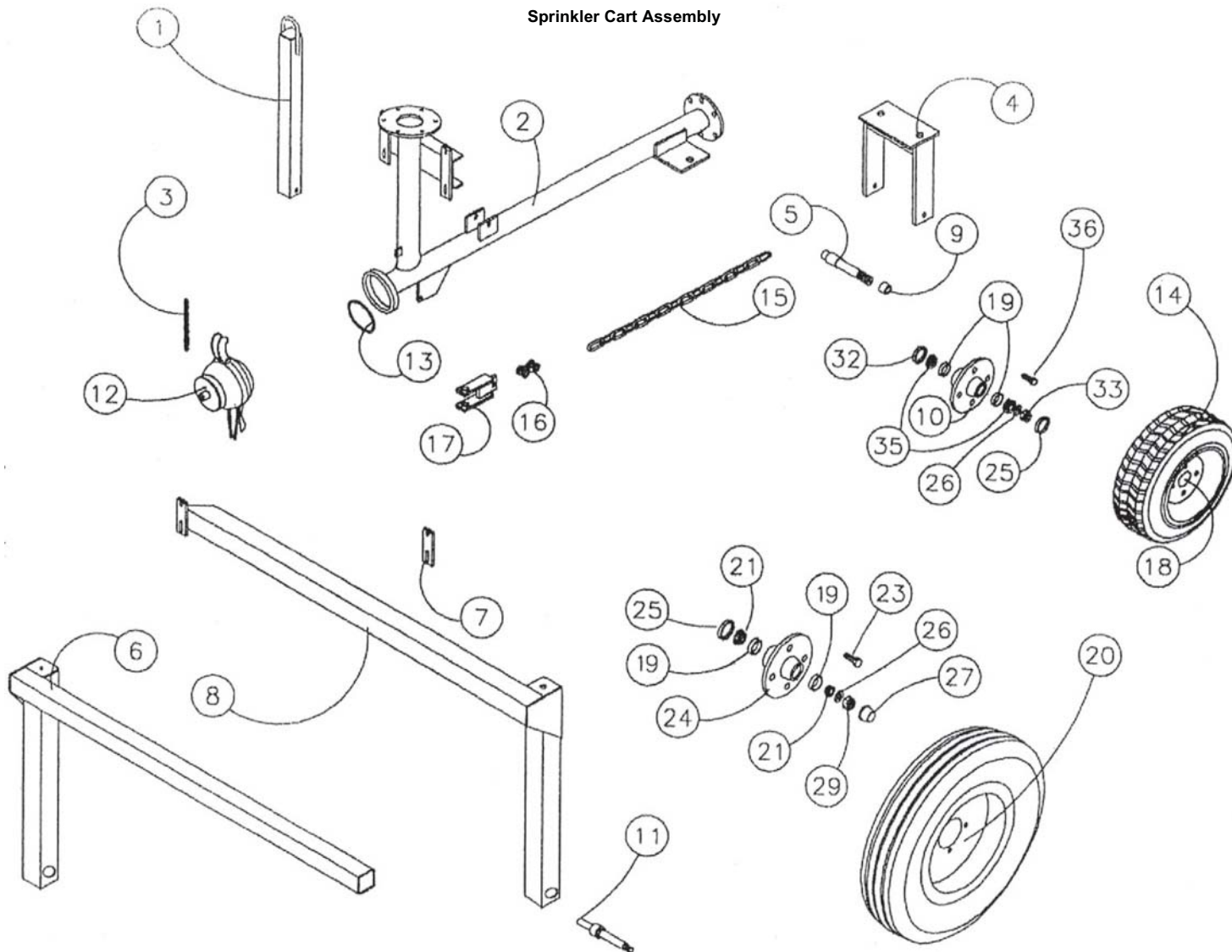
37	022-0619-0	Snap Ring, E40		4
38	022-0797-0	Arm Clutch Disengage		1
39	022-0191-0	Key with Pin		1
40A	022-0800-0	Gearbox 2 Speed 27/53		1
40B	599-0421-0	Handle, Shafter (Not Shown)		1
41	599-0416-1	Tach Pulley Gearbox		1
42	022-0367-0	Meter Counter Support		1
43	022-0366-0	Belt, Rd 3.5mm x 520mm		1
44	597-0277-1	Pulley Tach		1
45	022-0120-0	Tach		1
46	022-0794-0	Bar, Shut Off		1
47	022-0795-0	Stud, Shut Off Bar		1
48	022-0761-1	Brake Hub		1
49	022-1311-0	SPACER 35MM X 45MM X 5MM		1
50	022-2010-0	KEY, 12MM X 8MM X 20MM ROUND ENDS		1
51	022-0611-0	KEY 12MMX10MMX55MM		1

Sprinkler Cart Assembly



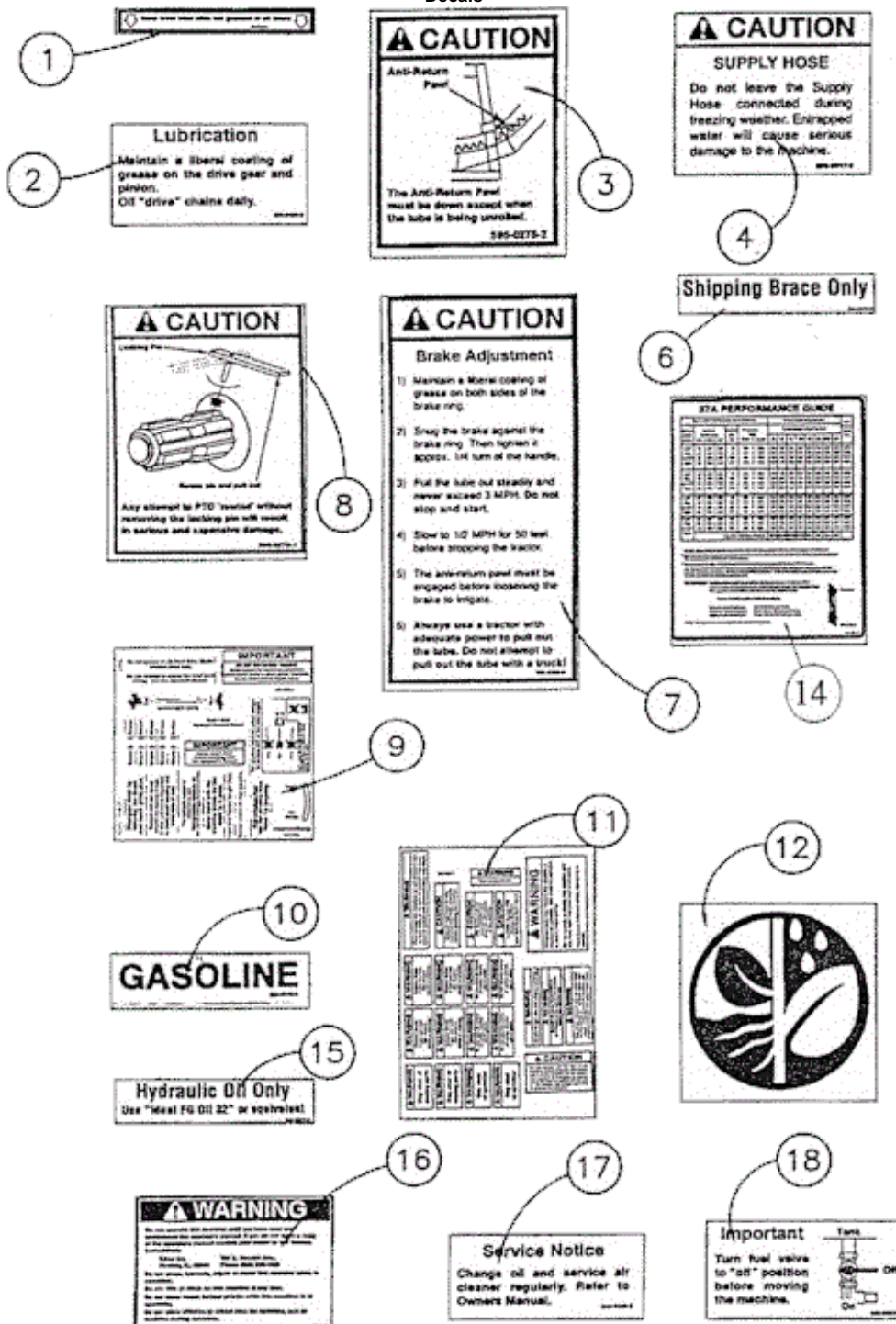
No.	Part Number	Description	Qty.
1	591-0003-1	Lift Bail	1
2	599-0417-0	Body, Guncart Without Shut Off Bar	1
3	850-4059-0	Chain 3/16" Proof Coil (Per Foot) (10 Links)	FT
4	595-0003-0	Yoke, Front Guncart	1
5	060-1019-9	Axle, Front	1
6	500-0021-0	Leg, Inner 30 Cart	1
7	594-0603-0	Strap	3
8	500-0020-0	Leg, Outer 30	1
9	060-0245-0	Sleeve	1
10A	588-0495-0	Hub W/Race, Wilton 280301	1
10B	595-0382-0	Hub & Axle Assy. Complete (Not Shown)	1
11	596-0137-0	Spindle	2
12	597-0312-0	Cap, Guncart	1
13	588-0023-3	O-ring 4"	1
14A	593-0265-0	Tire, 16 X 6.5 X 8 4 Ply	1
14B	593-0265-1	Tube, Inner 16 X 3.5 X 8	1
15	850-4060-0	Chain 3/8 Proof Coil	FT. 3
16	523-5394-1	Clevis, Double	2
17	523-5421-0	Hitch, Chain	1
18	593-0264-0	Wheel, 8 X 5.75 4 Bolt 4 BCD	1
18B	595-0606-0	Wheel & Tire Assembly	1
19	588-0356-6	Race, L44610	2
20	586-0229-4	Wheel & Tire, 4:80 x 12 x 4 Bolt Galv.	2
21	588-0356-8	Bearing, Timken L-44649	4
22	588-0356-6	Race, L44610	4
23	588-0356-0	Bolt, Hub Wilton 913535	8
24	588-0356-4	Hub	2

Sprinkler Cart Assembly

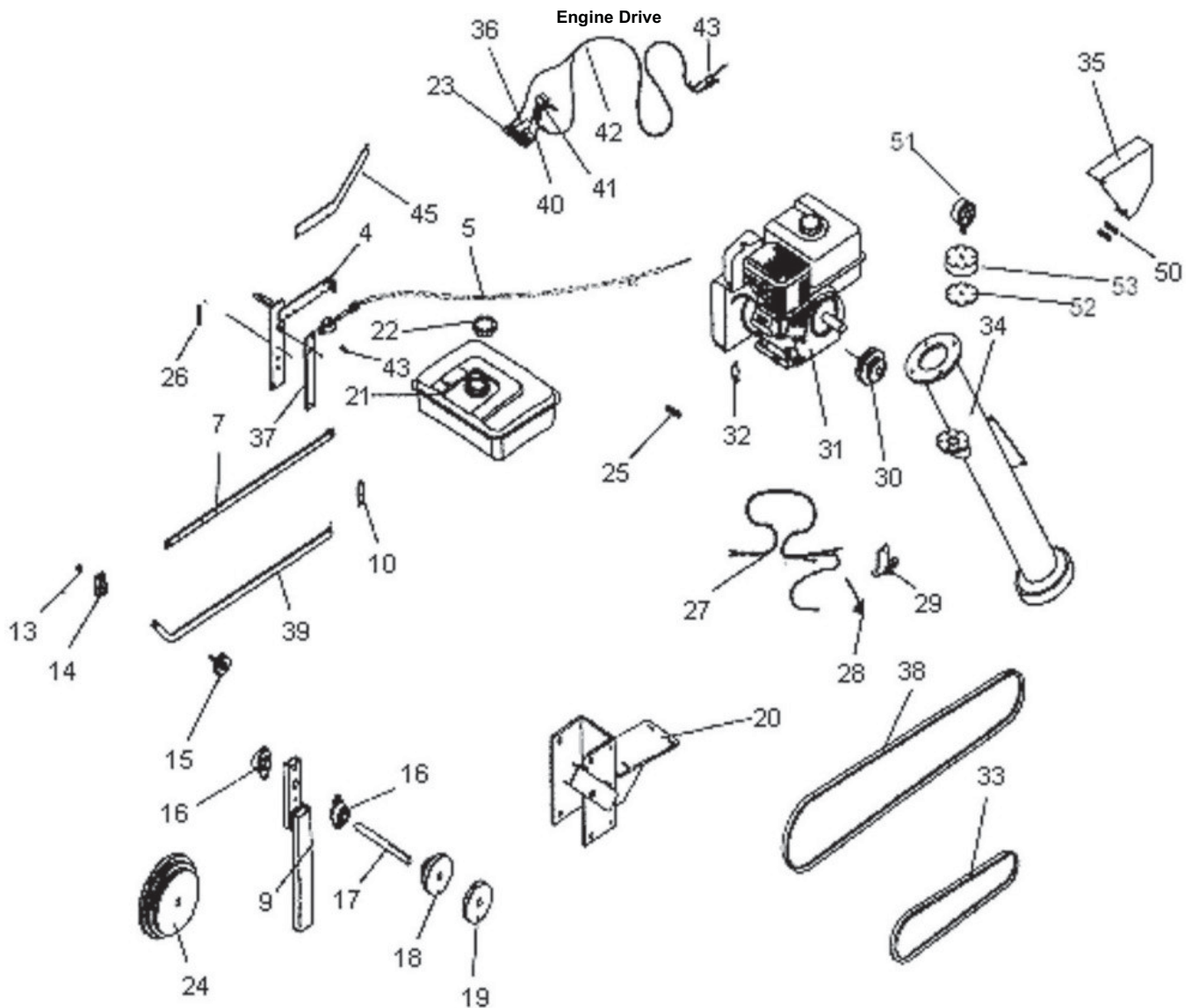


25	588-0356-5	Seal, Grease Wilton 906282	2
26	588-0356-7	Washer, Spindle Wilton 913608	2
27	588-0356-1	Cap, Hub Wilton 909981	8
29	588-0356-2	Nut, Wilson 912953	2
32	588-0356-5	SealCR 12437	2
33	551-1602-0	Nut, 1" NF Slotted	1
34	588-0357-7	Washer, Wilton 913535	2
35	588-0356-3	Bearing L 44643	2
36	588-0356-0	Bolt, Lug	4

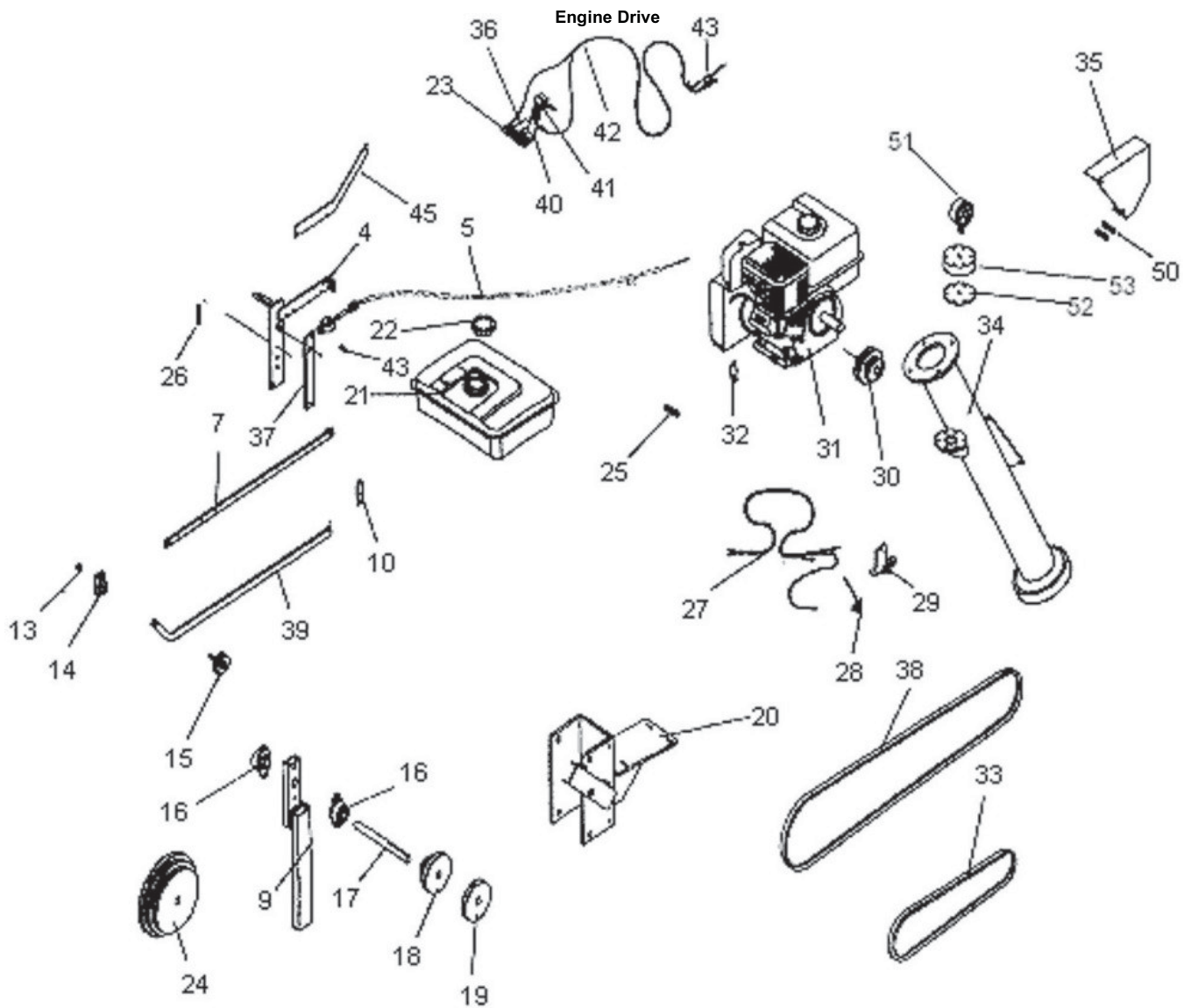
Decals



No.	Part Number	Description	Qty.
1	590-0013-0	Decal, Keep Slide Greased	1
2	596-0428-0	Decal, Lubrications	1
3	595-0275-2	Decal, Caution Anti-Return Pawl	1
4	596-0017-0	Decal, Caution Supply Hose	1
6	595-0276-0	Decal, Shipping Brace Only	2
7	596-0309-0	Decal, Caution Brake Adjustment	1
8	595-0275-1	Decal, Caution Locking Pin	1
9	594-0565-0	Decal, Important Sheet	1
10	590-0113-0	Decal, Gasoline	1
11	594-0565-1	Decal, Warning Sheet	1
12	585-0299-3	Decal, Logo 10"	6
14	599-0371-0	Decal, Performance Chart	1
15	596-0428-0	Decal, Lubrication (Same as Above)	1
16		Decal, Warning	1
17	596-0426-0	Decal, Service Notice	1
18	596-0427-0	Decal, Important Turn Fuel Valve	1



No.	Part Number	Description	Qty.
4	599-0256-0	Throttle Bracket	1
5	599-0132-0	Throttle Control Cable	1
7	599-0486-0	Throttle Rod, Comp.	1
9	599-0253-0	Jackshaft Mt.	1
10	599-0066-0	Throttle Mt.	1
13	512-4847-0	Bushing, STL .56 X .40 X .32L	1
14	599-0027-0	Swivel	1
15	526-5670-0	Knob, 3/8 x 1.0 Stud	1
16	599-0338-0	Bearing, 2 Hole 3/4B Cast Iron	1
17	599-0277-0	Jackshaft, Engine	1
18	599-0084-0	Pulley 2-3-4 .75" Bore	1
19	599-0295-0	Pulley, 4" x 3/4" Bore	1
20	599-0255-1	Mt. Engine	1
21a	599-0219-1	Fuel Tank 4 HP Robin	1
21b	599-0443-0	Fuel Tank 8 HP Honda	1
22a	599-0221-0	Cap, Robin	1
22b	599-0221-1	Cap, Honda	1
23	5990432-0	Plate	1
24	022-0593-1	Pulley, 166mm 191mm 213mm	1
25	450-4858-2	Spring, .5 OD x 2 x .47WRL4CL	4
26	599-0422-0	Spring, .045 W x .38 x 2.5	1
27	599-0324-1	Wire Harness	1
28	599-0279-0	Switch, Robin Shut Off	1
29	599-0344-0	Switch Holder	1
30	599-0431-0	Pulley, 3.4" x .75" Bore	1
31a	598-0141-1	Engine, Robin 4 HP	1
31b	584-0701-7	Engine, Honda 4HP	1



32	599-0265-0	Spring Holder	1
33	599-0291-0	Belt, AX45	1
34	599-0268-0	Entry Fitting	1
35	599-0271-0	Shield	1
36	596-0079-0	Strap	1
37	599-0035-0	Throttle Pivot Arm	1
38	599-0436-0	Belt AX63	1
40	599-0424-0	Strip	1
41	599-0430-0	Switch, Contact	1
50	599-0272-0	Spring .313 OD x .049 x 3.0	1
51	586-0687-0	Gauge 300 LBS	1
52	587-0046-0	Diaphragm, Gauge Protector	1
53	586-0690-1	Body, Gauge Protector	1
54	599-0233-0	Plate (Not Shown)	1
55	599-0421-0	Shift Arm (Not Shown)	1
56	599-0278-0	Washer Plate (Not Shown)	1