



**Turbine Drive Water-Reels®
Engine Drive Slurry-Reels**

**T37M
Squatter
(MF1)**

Parts Manual

Serial No. 330,000 +



AG-RAIN®

700 S. Schrader Ave.
Havana, Illinois 62644
Phone: 309-543-4425
Fax: 309-543-4945

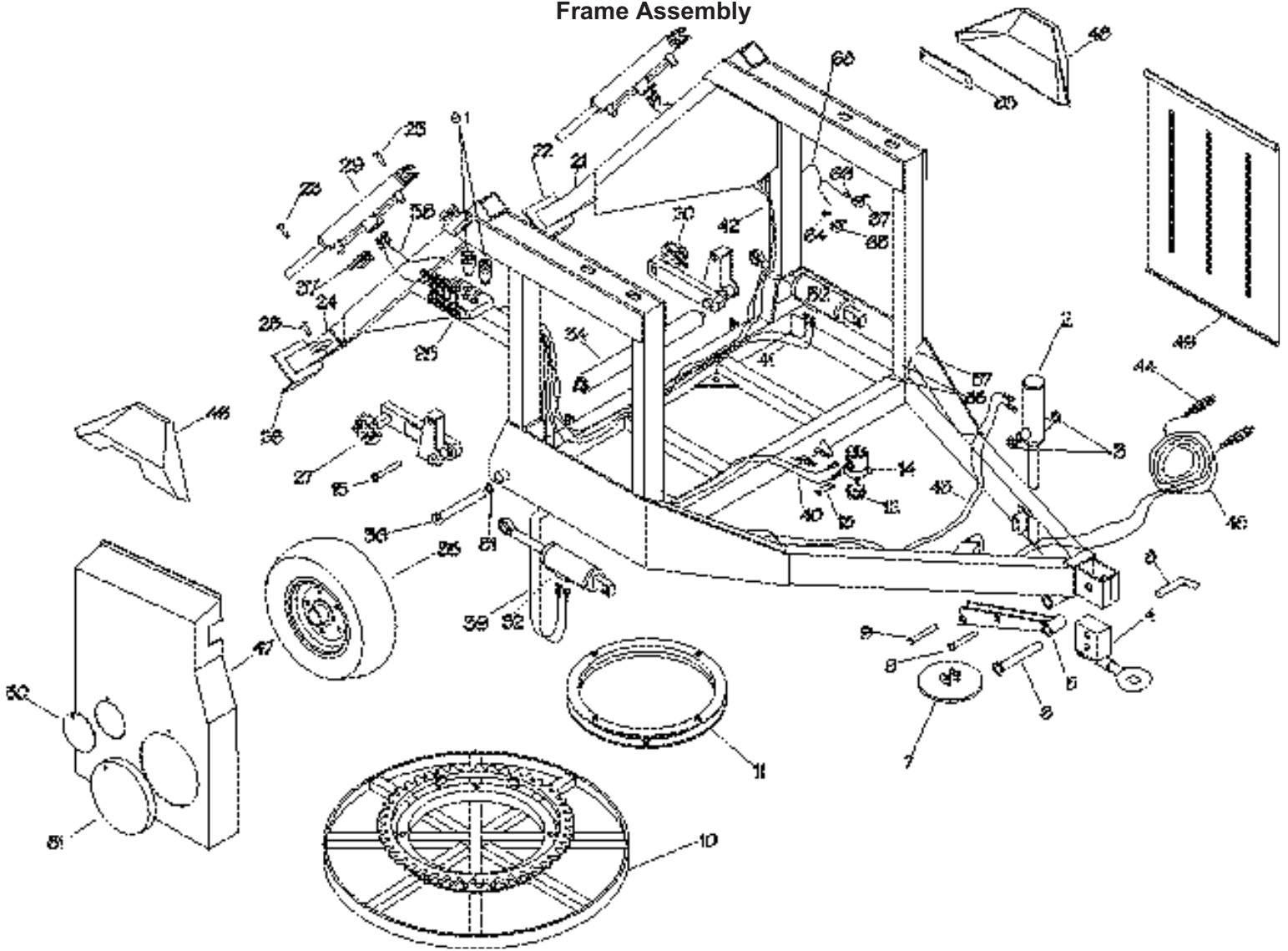
Assembly	Page
Frame Assembly	3-5
Spool Assembly	6-7
Levelwind Assembly	8
Shut Off Bar	9
Sprinkler Cart Lift Assembly	10
Drive Train	11-13
Gearbox	14-16
Turbine	17-20
Sprinkler Cart Assembly	21-22
Decals	23

Notes:

For Parts That Are Described As "Left" Or "Right" The Water Inlet Side Of The Machine Is Considered The Right Side.

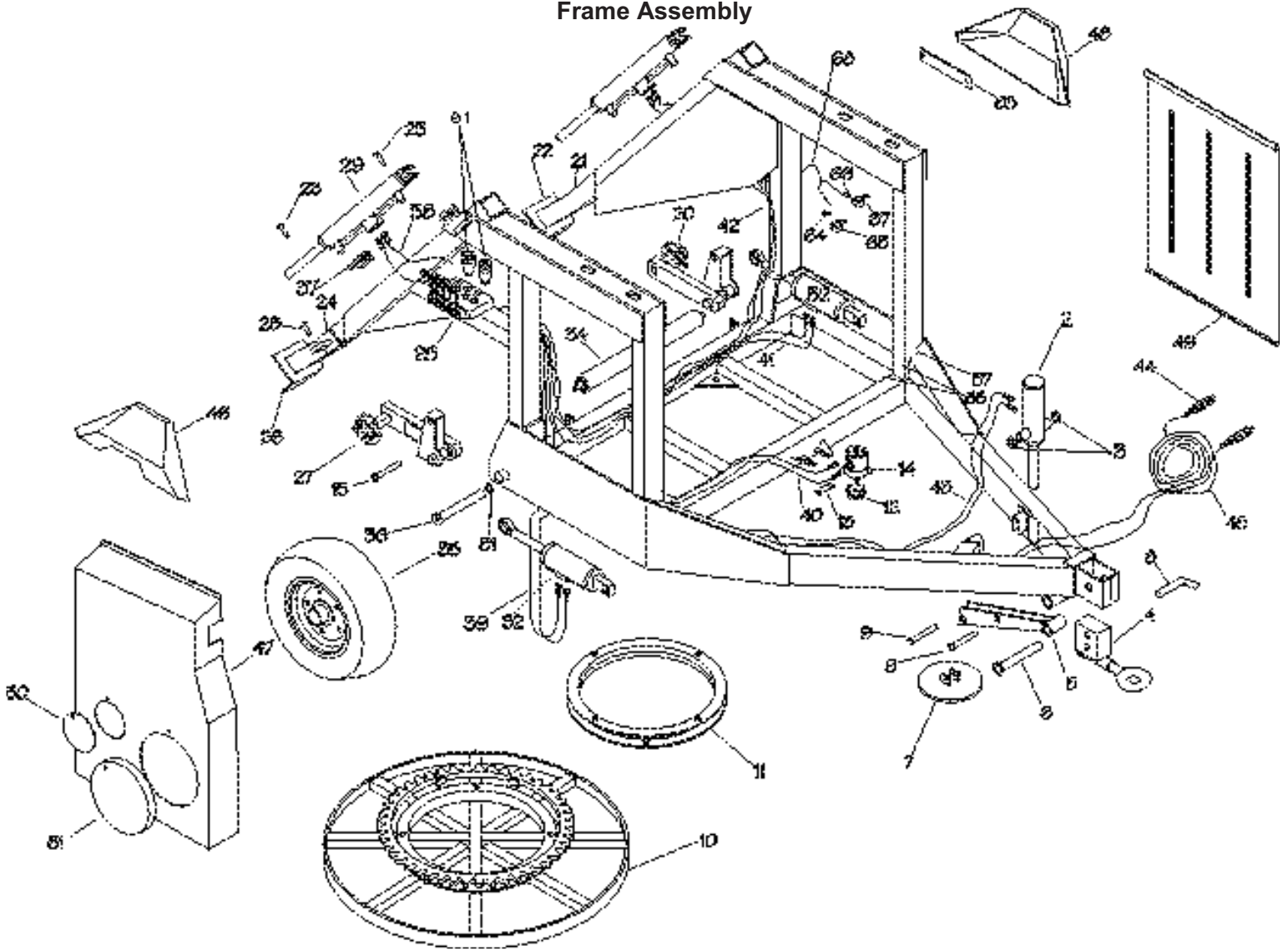
Items Such As Common Fasteners, Grease Fitting, And Other Small Parts Easy To Acquire Locally Are Not Listed.

Frame Assembly



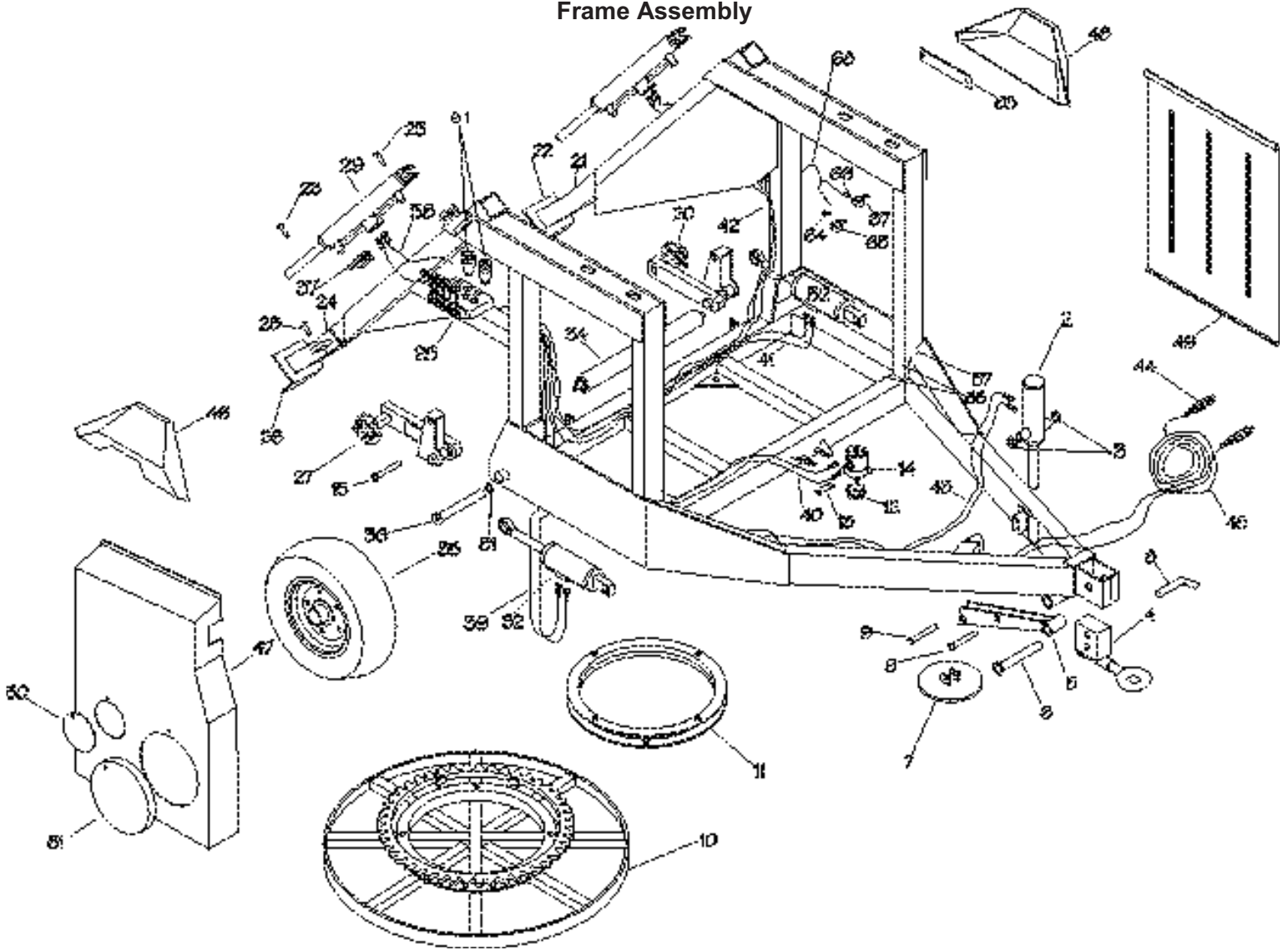
No.	Part Number	Description	Qty.
2	022-0870-0	Jack, Hydraulic	1
4	022-1238-0	Hitch	1
5	022-0871-0	Arm, Jack	1
6	022-0520-1	Pin	1
7	022-1239-0	Foot, Jack	1
8	022-0865-0	Pin	1
9	022-0873-0	Shaft	1
10	022-1240-0	Base	2
11	020-9955-4	Turntable Bearing	1
12	022-0877-0	Gear	1
13	022-1266-0	Plate	1
14	022-0875-0	Motor, Hydraulic	1
15	022-1267-0	Pin Dia. 25mm x 90mm	2
20	022-1268-0	Strut Assembly - Left Wheel	1
21	022-1269-0	Left Leg	1
22	022-0127-0	Feet-Chain Side	1
23	022-0893-0	Shaft Dia. 25mm x 55mm	4

Frame Assembly



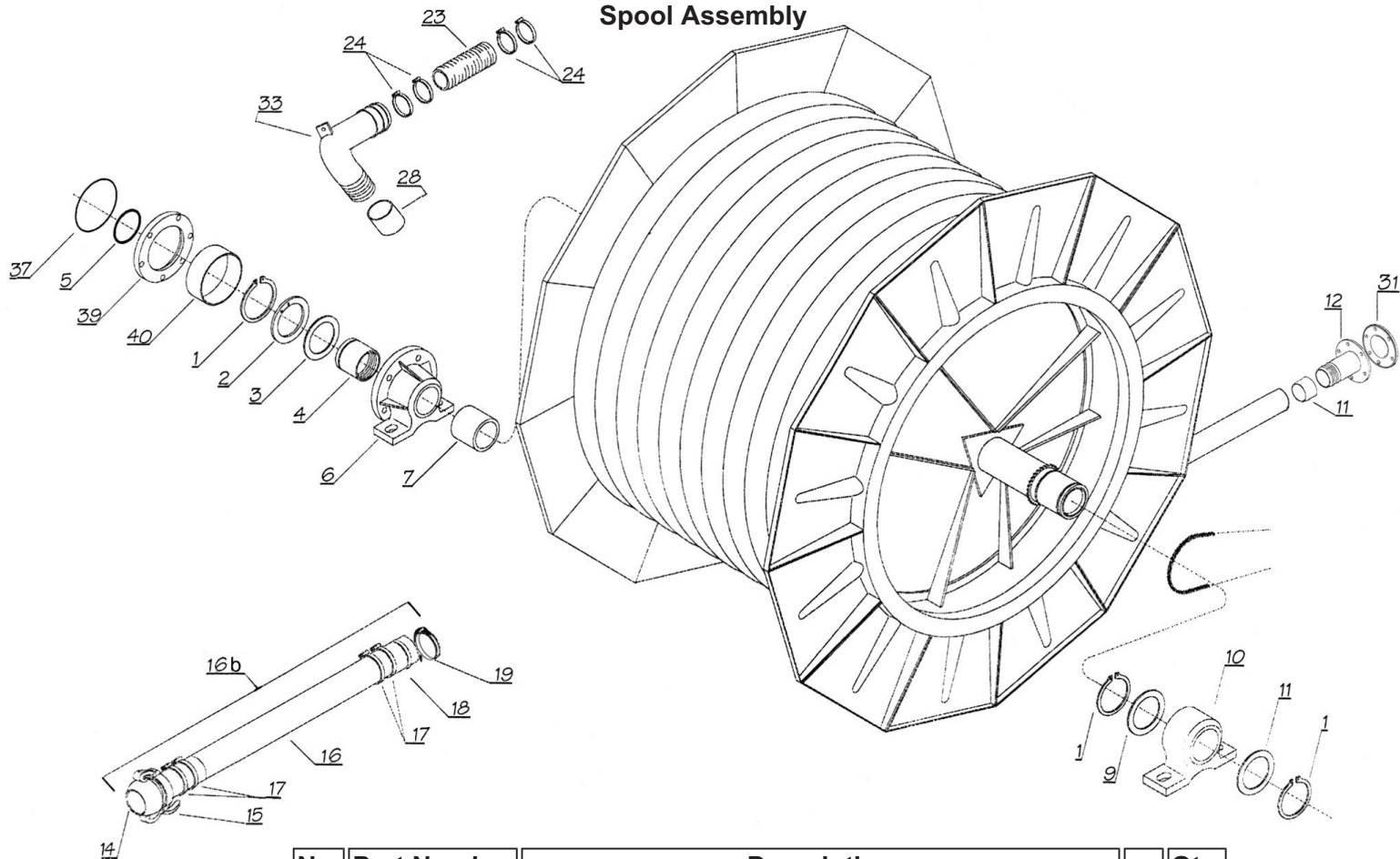
24	022-1271-0	Right Leg	1
25a	022-1272-0	Valve Assembly	1
25b	022-0559-1	O-Ring 15 mm ID X 2.5mm	1
26	022-1273-0	Feet-Turbine Side	1
27	022-1274-0	Strut Assembly - Right Wheel	4
28	022-0873-0	Pin	8
29	022-0882-0	Cylinder	2
31	022-1275-0	Stop Ring E40	2
32	022-1276-0	Hydraulic Cylinder	2
34	022-0887-0	Roller	1
35A	022-1277-0	Tire 11.5 x 80 x 15.3	2
35B	022-1008-0	Wheel	2
36	022-1278-0	Pin Dia. 40mm x 242mm	2
37	022-1279-0	Valve, 1/4"	1
38	022-1280-0	Hose Assembly-R1T elbow x straight 0.7 M	2
39	022-0891-0	Hose Assembly-R1T elbow x straight 1.8 M	2
40	022-1281-0	Hose Assembly-R1T elbow x elbow 2.6 M	2
41	022-1282-0	Hose Assembly-R1T elbow x straight 3.7 M	2

Frame Assembly



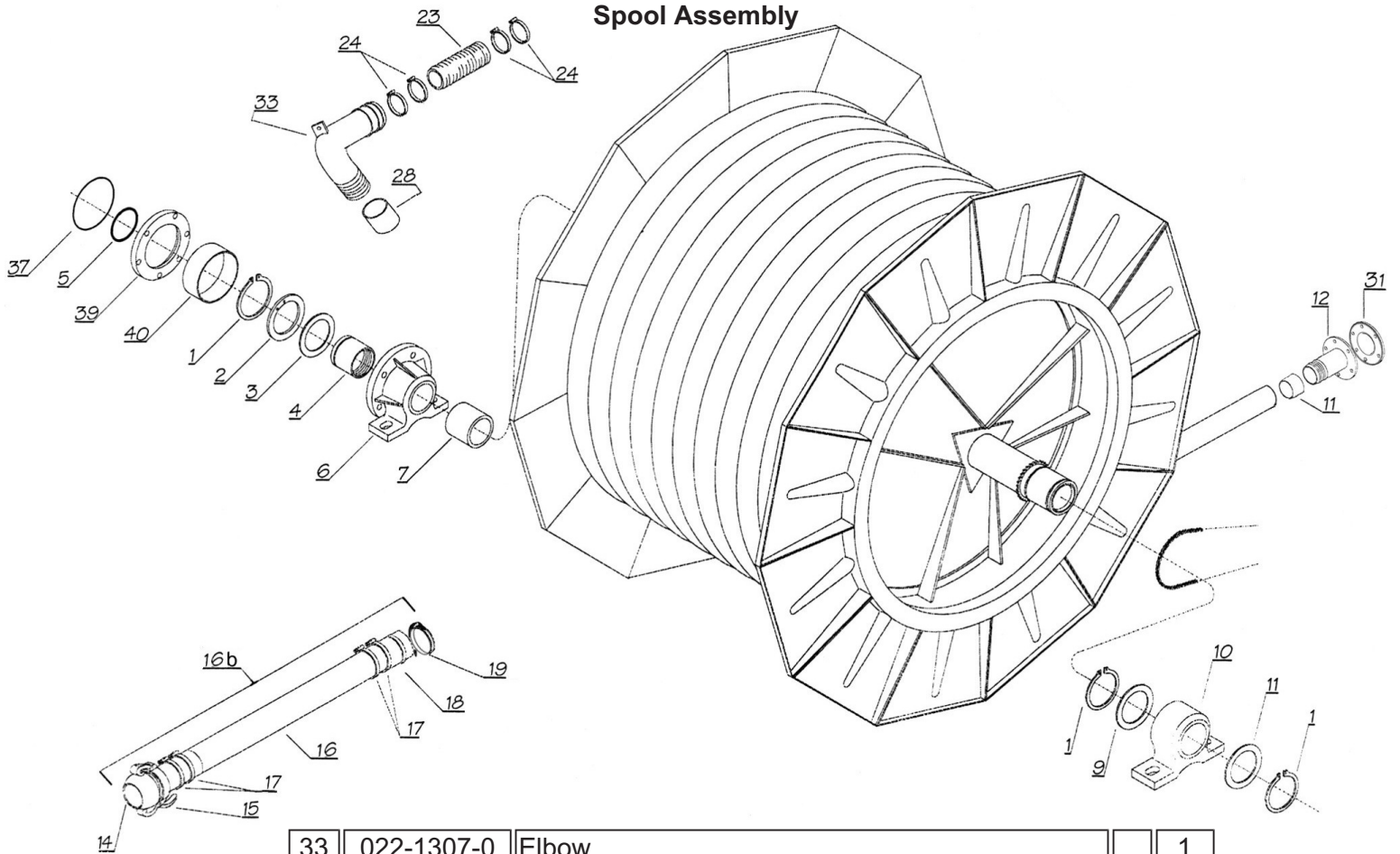
42	022-1283-0	Hose Assembly-R1T elbow x elbow 4.7 M	2
43	022-0892-0	Hose Assembly-R1T elbow x straight 3.6 M	2
44	022-0896-0	Fitting	2
45	022-1284-0	Hose Assembly-R1T elbow x straight 13.0 M	2
46	022-1285-0	Guard	1
47	022-1022-0	Turbine Shield	1
48	022-1286-0	Battery Shield	1
49	022-1016-0	Shield	1
50	022-0540-0	Shield, PTO	1
51	022-0539-0	Shield	1
61	022-1287-0	Flow Control Valve	2
63	022-1288-0	Battery Support	1
64	022-1289-0	Blue Eyelet	
65	022-1290-0	Connector - Negative	
66	022-1291-0	Red Eyelet	
67	022-1292-0	Connector - Positive	
68	022-1293-0	Cable	

Spool Assembly



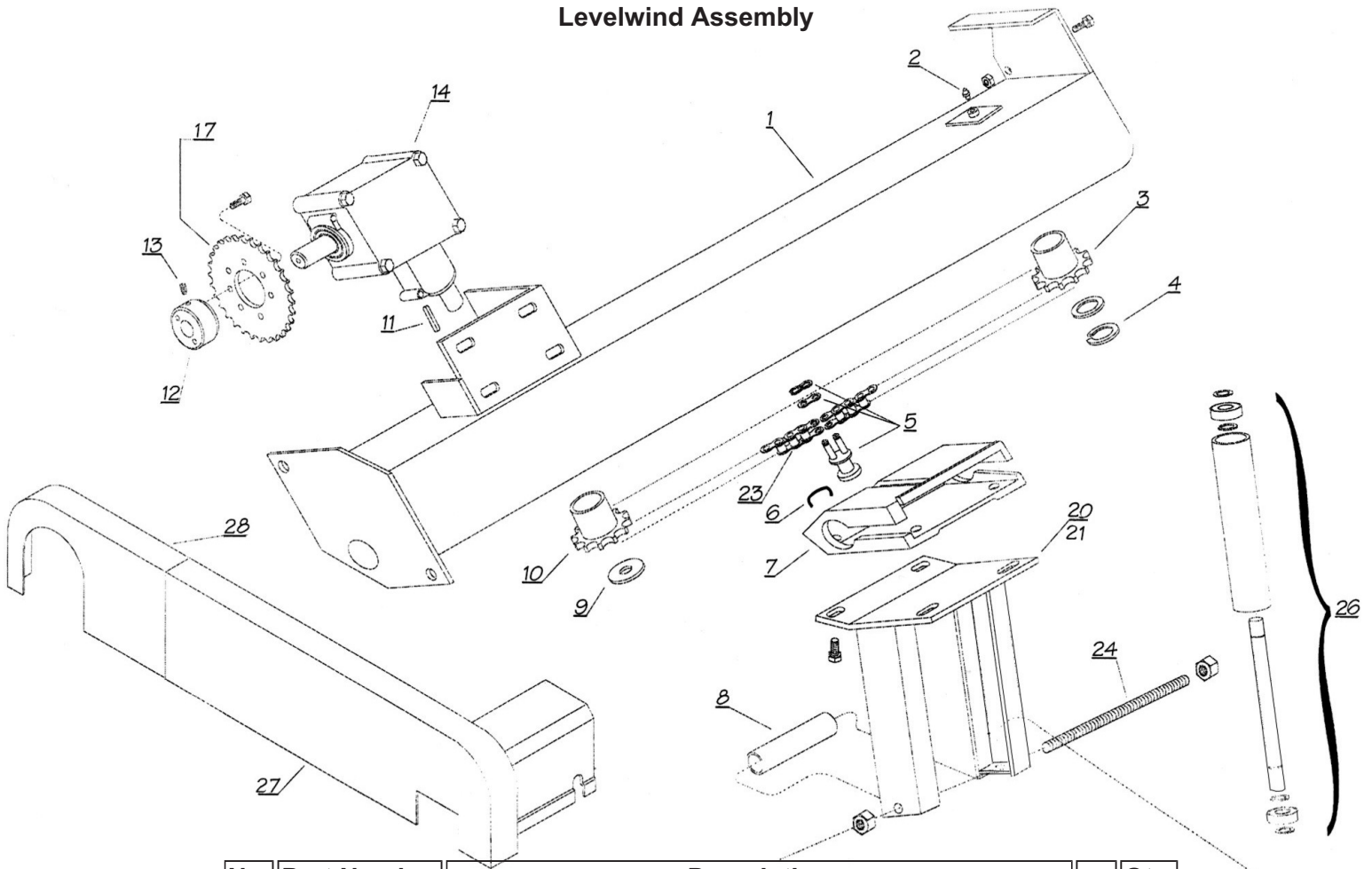
No.	Part Number	Description	Qty.
1	022-0008-0	Stop Ring #110	3
2	022-0009-0	Ring Slip Joint	1
3	022-0010-0	Antifriction ring	1
4	022-1305-0	Ring Nut, Slip Joint	1
5	022-1306-0	O-Ring 110 x 6	1
6	022-0013-0	Flanged Support	1
7	022-0487-1	Spacer	1
9	020-9906-2	Spacer	2
10	022-0015-0	Hose Drum Support	1
11	020-0383-3	Hose Band	1
12	020-0383-7	Tube End	1
14	588-0256-1	Hose End Outlet 4" Ball	1
15	588-0023-1	Lever Ring 4"	1
16	252-4962-0	Hose, Irrigation Supply	1
16b	588-0284-0	Hose, Supply Complete Assembly	1
17	030-1924-0	Clamp, Supra 104mm-112mm	4
18	588-0266-0	Hose End Inlet 4"	1
19	400-4927-0	Band, Ring Lock 4"	1
23	020-9911-1	Hose 100 x 118	1
24	030-1925-8	Clip 108 x 120	1
28	020-9911-5	Hose Ring	1
29	022-0458-0	Spool	1
31	020-9920-2	Gasket	1

Spool Assembly



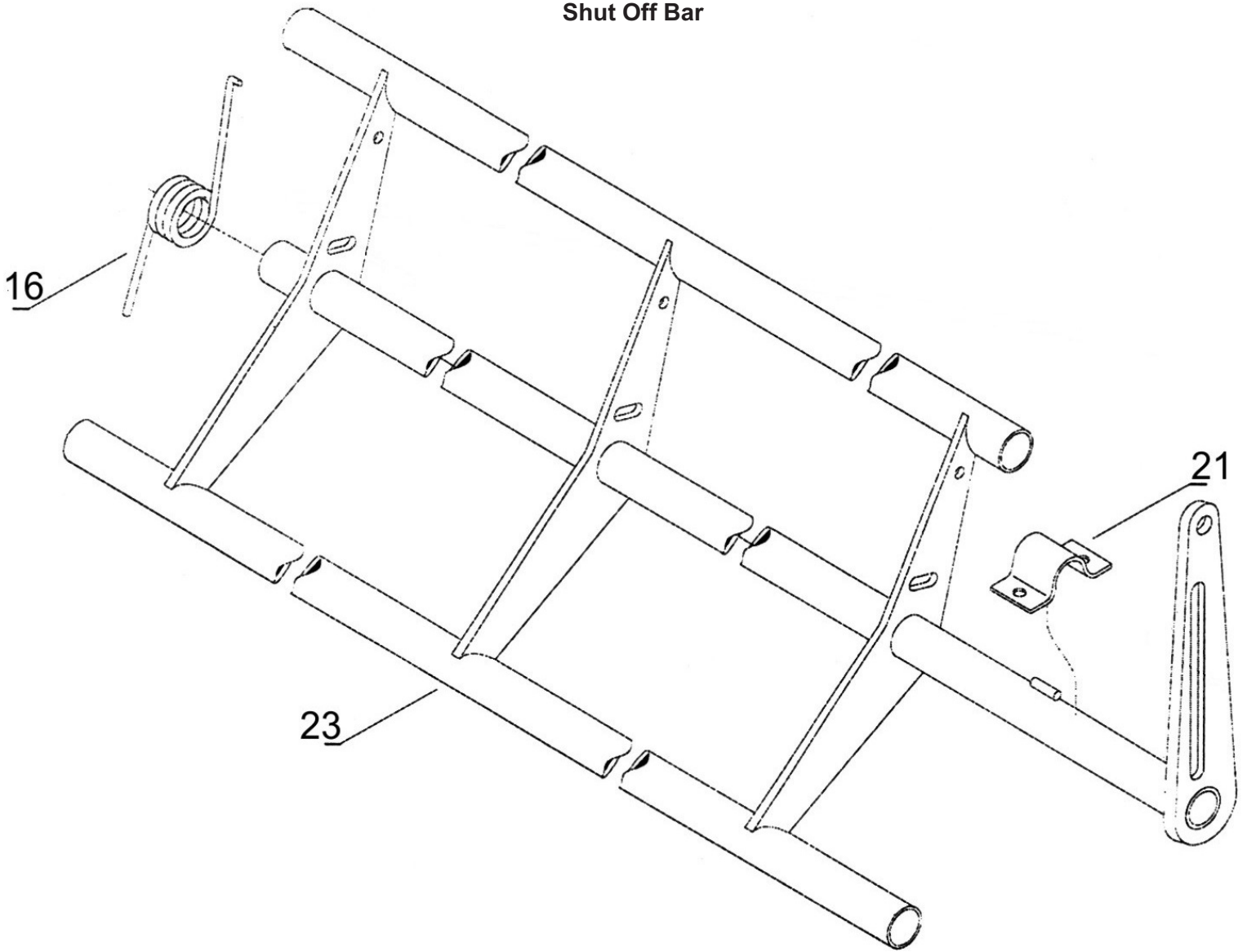
33	022-1307-0	Elbow		1
37	022-0486-1	O-Ring 4600		1
39	022-1308-0	Flange		1
40	022-1309-0	Spacer		1

Levelwind Assembly



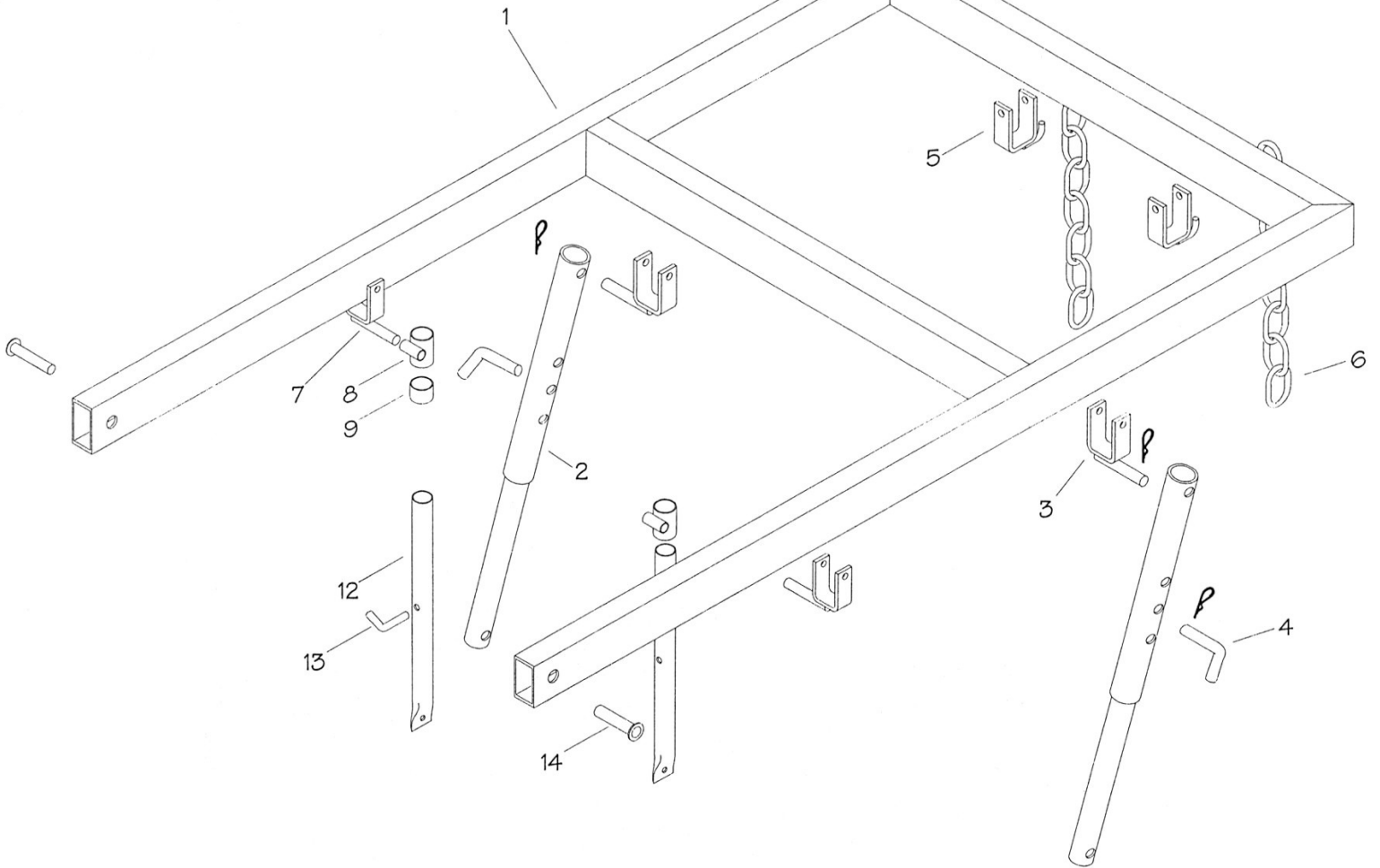
No.	Part Number	Description	Qty.
1	020-0486-6	Levelwind Frame	1
2	022-1298-0	Grease Zerk	1
3	020-9914-8	Sprocket 1" Z10	1
4	002-0342-0	Stop Ring E25	1
5	020-9914-3	Guide Link	1
6	020-0077-6	Retaining Spring	1
7	020-0014-1	Fork Suport	1
8	022-0528-0	Spacer 3/4"	1
10	022-0904-0	Sprocket 1" Z10	1
11	022-0756-0	Key 8 x 32	1
12	020-0015-3	Sprocket Hub	1
13	020-0015-2	Set Screw	1
14	020-0015-4	Gear Box	1
17	020-9915-8	Sprocket Z36	1
20	022-1233-0	Fork Dia 100-110mm	1
21	022-1234-0	Fork Dia. 120 mm	1
23	020-0486-5	Chain 1" (111 rollers)	1
24	022-0134-0	Tie Rod M16	1
25	022-1235-0	Chain 1/2" x 5/16 (279 Rollers)	1
26	022-0387-0	Roller	1
27	022-1236-0	Chain Shield	1
28	022-1237-0	Chain Shield	1

Shut Off Bar



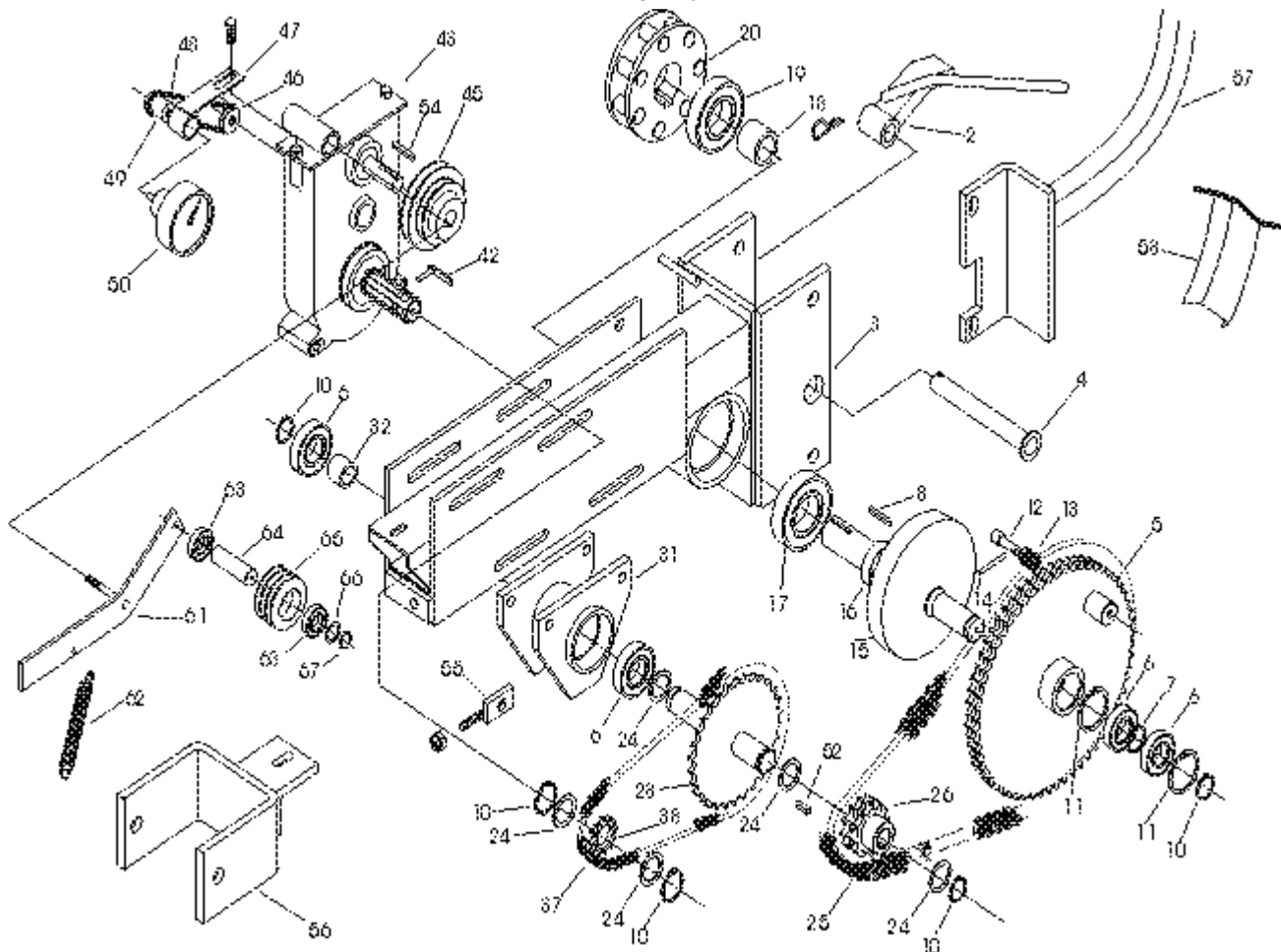
No.	Part Number	Description	Qty.
16	020-0016-6	Spring	1
21	020-0016-1	Retainer	1
23	022-1361-0	Shut Off Bar	1

Sprinkler Cart Lift Assembly



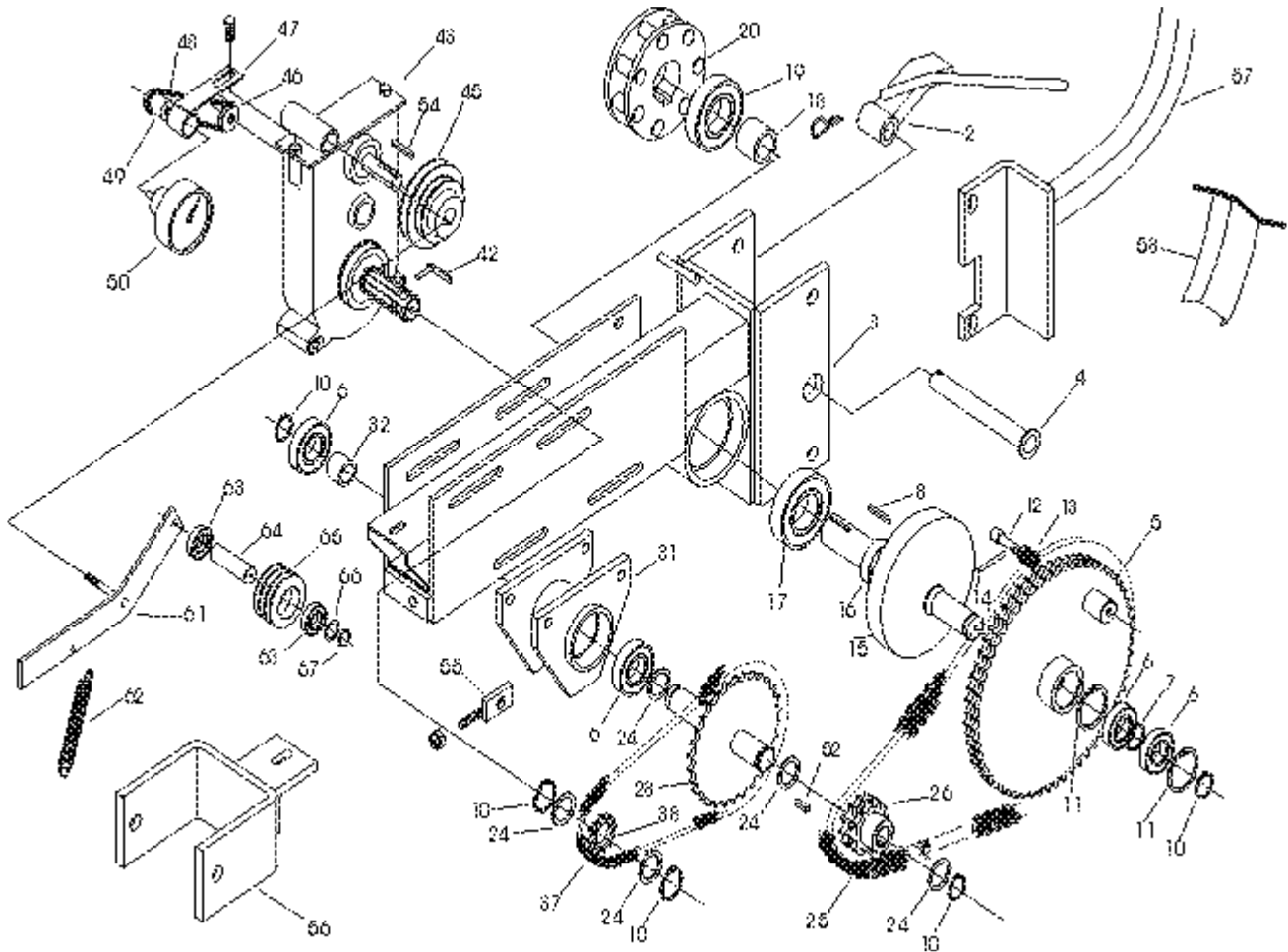
No.	Part Number	Description	Qty.
1	022-1294-0	Guncart Lift	
2	022-1295-0	Back Brace	
3	022-0919-0	Frame Support	
4	022-0920-0	Pin	
5	022-0921-0	Hanger	
6	022-0922-0	Chain	
7	022-1296-0	Stop Rod	
8	022-1216-0	Front Brace Holder	
9	022-1297-0	Spacer	
12	022-1218-0	Front Brace	
13	022-1219-0	Pin	
14	022-0924-0	Pin	

Drive Train



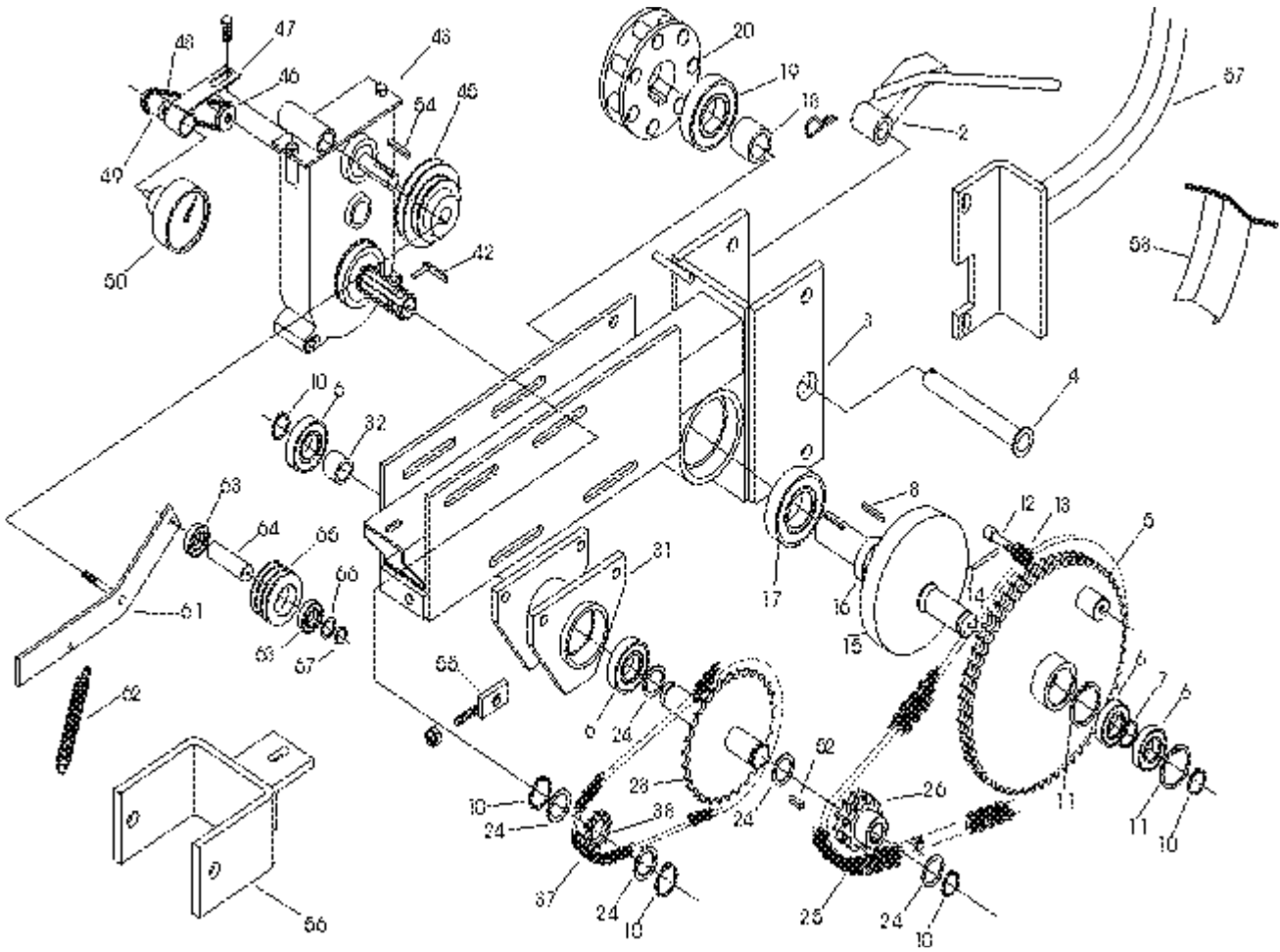
No.	Part Number	Description	Qty.
2	02205211	TACH PULLEY 1.15	1
3	02208060	FRAME, POWERTRAIN SUPPORT - FG1	1
4	02205201	PIN, JACK ARM PIVOT 30MM - MG1/2	1
5	02204960	SPROCKET ASM 3/4" Z60 SINGLE	1
6	02203530	BEARING,6207-2RS	4
7	02204950	SPACER	1
8	02204990	KEY 16 X 40	1
10	02205340	SNAP RING E35	5
11	02204940	02204940	2
12	02203480	PIN	1
13	02203470	SPRING	1
14	02203480	PIN	1
15	02207610	HUB, BRAKE 55MM BORE - FG1/MG1	1
16	02208040	SHAFT, PINION 40MM DIA, BRAKE-M/ST7	1
17	02204620	BEARING,6208-2RS	1
18	02205021	SPACER	1
20	02213160	PINION, 40MM BORE M20 PIN -FF1/D2	1
24	02205350	SPACER, 35MM X 45MM X 1MM	1
25	87548473	CHAIN 3/4"-2DW RLLR PER FT	
26	02205110	SPROCKET 3/4"Z13 002945	
28	02205090	SPROCKET 5/8"Z52 003591	1

Drive Train

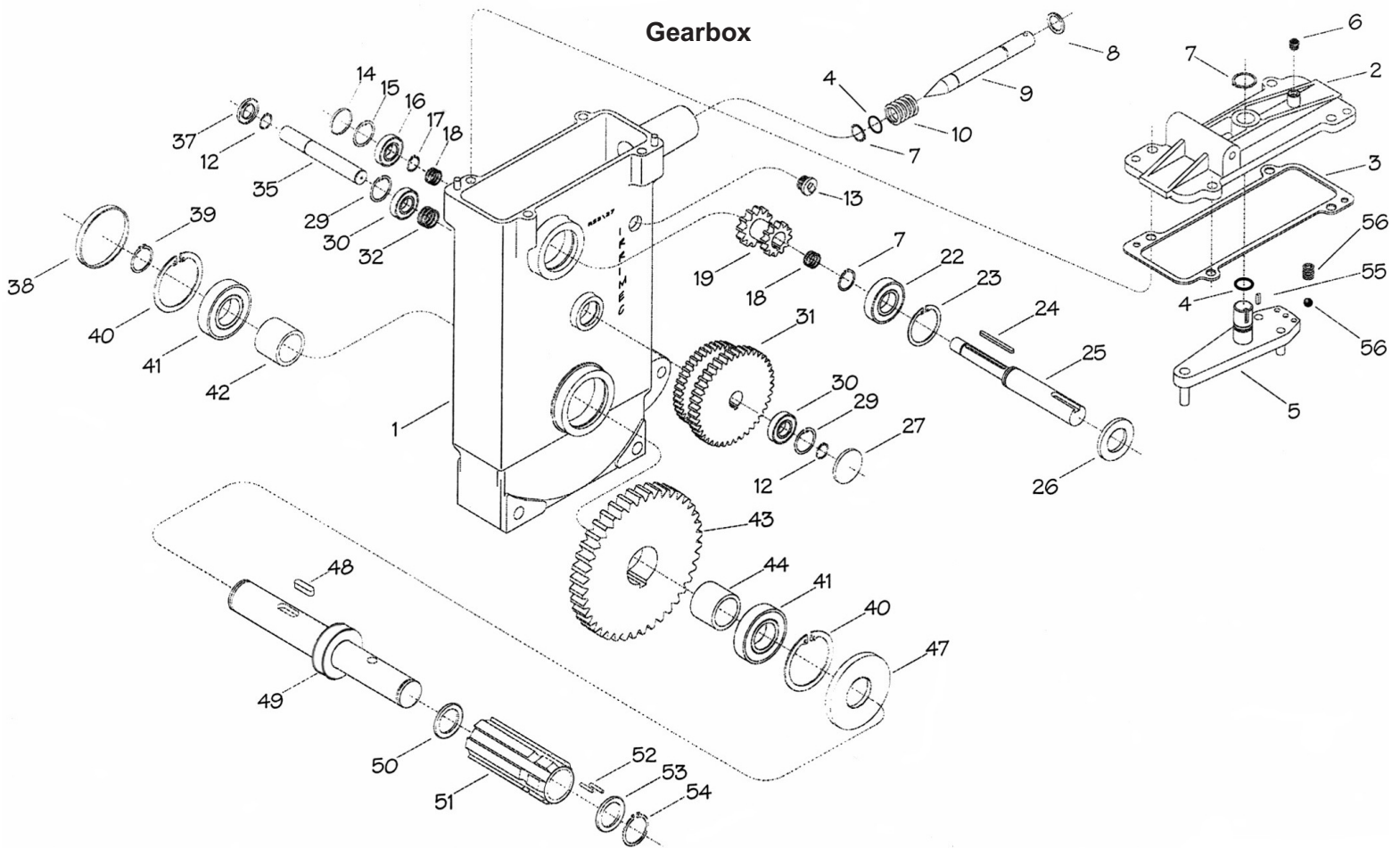


31	02200500	Support	1
32	02213110	SPACER 35MM X 45MM X 5MM	1
37	02207520	DRIVE, CHAIN BASE(GRBX RPLCMNT)-FG1	1
38	02205140	SPROCKET 5/8"Z13 002445/B	1
42	02201910	SAFETY KEY & THREADED PIN	1
43	02208000	GEARBOX,2 SPEED 27/53	1
45	02205930	PLLY,3 STEP 100,125,147 W/SETSCRW	1
46	59904161	TACH PULLEY 1.15	1
47	02203670	BRACKET, TACHOMETER	1
48	02203660	BELT,DIA 3.5	1
49	59702771	PULLEY,TACH .966	1
50	02201200	TACHOMETER ASM,0-400 FT/HR A SERIES	1
54	02205510	KEY 6 X 50	1
55	02213120	Chain Tightener	1
56	02213150	End Support	1
57	02213130	Shield Mt.	1
58	02213140	Shield	1
61	02207450	ARM, IDLER - D2/FF1/FG1/MF1/MG1/2	1
62	02203180	SPRING BELT TIGHTENER	1
63	02214780	BEARING, 6205 2RS	1
64	02206530	SHAFT,BELT IDLER	1

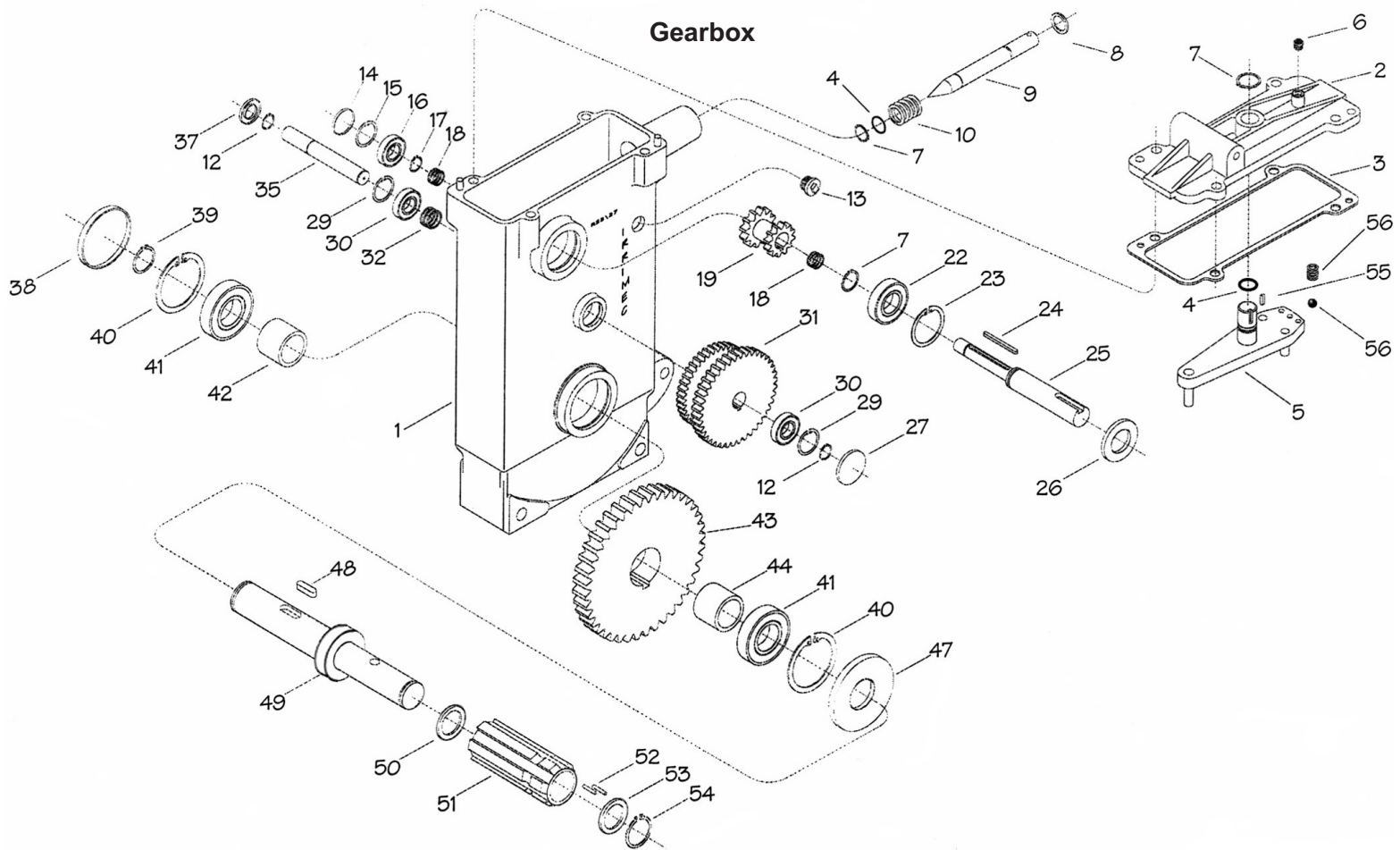
Drive Train



65	02206540	PULLEY IDLER 3 GROOVE	2
66	02208120	Washer	1
67	02203420	SNAP RING E25	1

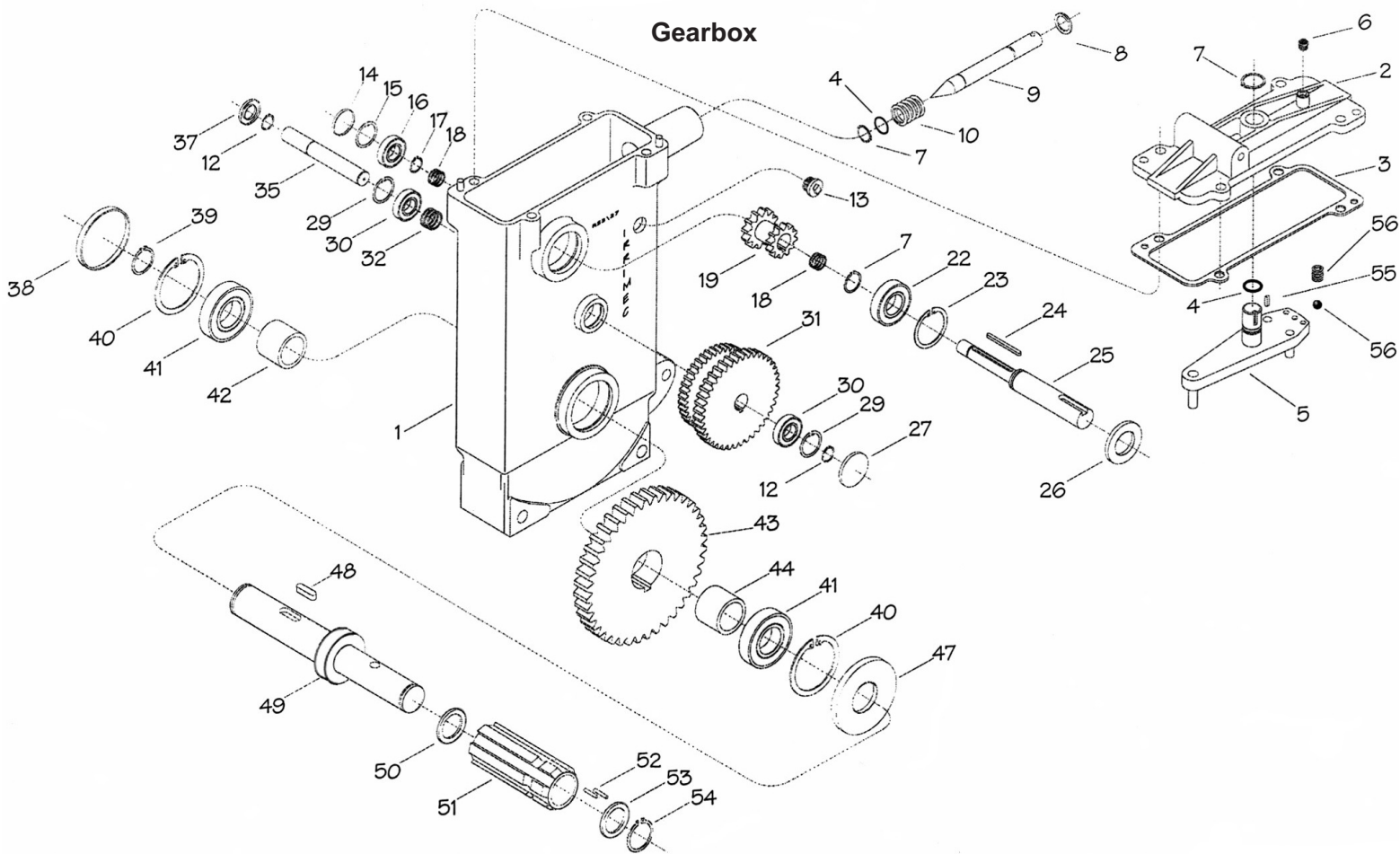


No.	Part Number	Description	Qty.
1	022-0765-0	Gearbox Body	1
2	022-0766-0	Gearbox Cover	1
3	022-0767-0	Gasket	1
4	022-0559-0	O-Ring 20.78mm OD x 2.62mm Cross Section	2
5	022-0768-0	Clutch Rod	1
6	022-0769-0	Breather	1
7	022-0168-0	Snap Ring E20	3
8		Washer	1
9	022-0770-0	Clutch Pin	1
10	022-0771-0	Spring f.2,5 L.34 dia. 29,5	1
12	022-0131-0	Snap Ring E15	2
13		Plug 3/4"	1
14	022-0171-0	Plug 32 x 7	1
15	022-0170-0	Snap Ring i32	1
16	022-0169-0	Bearing 6201	1
17	022-0174-0	Snap Ring E12	1
18	022-0772-0	Shim	
19	022-0773-0	Clutch Pinion Z28 M1,5-Z16 M1,5	1
22	022-0167-0	Bearing 5204 2RS	1
23	022-0166-0	Snap Ring i47	1
24	022-0774-0	Key 4x	1

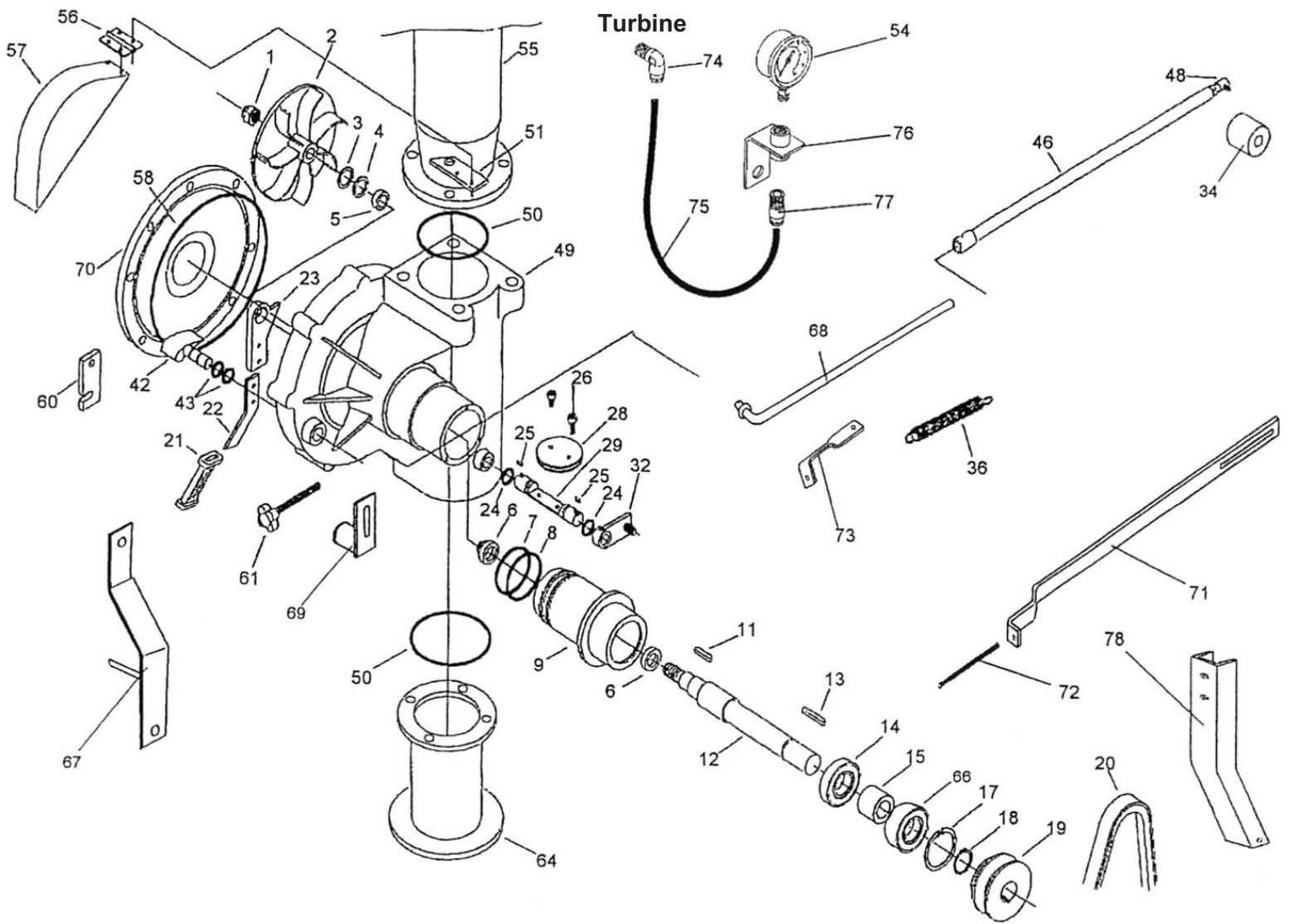


25	022-0775-0	Inlet Shaft	1
26	022-0165-0	Seal, 20mm x 47mm x 7mm	1
27	022-0776-0	Plug 35 x 8	1
29	022-0777-0	Snap Ring i35	2
30	022-0778-0	Bearing 6202	2
31	022-0779-0	Pinion Z118 M1,5-Z106 M1,5-Z13 M2	1
32	022-0780-0	Shim	
35	022-0781-0	Middle Shaft	1
37	022-0782-0	Oil Seal 35mm x 15mm x 7mm	1
38	022-0624-0	Plug 62 x 10	1
39	022-0187-0	Snap Ring E30	1
40	022-0181-0	Snap Ring i62	2
41	022-0182-0	Bearing 6206 (no seals)	2
42	022-0784-0	Spacer	
43	022-0785-0	Pinion Z94 M2	1
44	022-0786-0	Spacer	
47	022-0180-0	Oil Retainer 62 x 35 x 7	1
48	022-0788-0	Key 8 x 7 x 25	1
49	022-0790-0	Shaft	1
50	022-0194-0	Spacer 22 x 3	1
51	022-0195-0	Pin, Splined	1
52	022-0193-0	Pin, bearing 2 x 17.8	62
53	022-0190-0	Spacer Dia 18 x 2.8	1

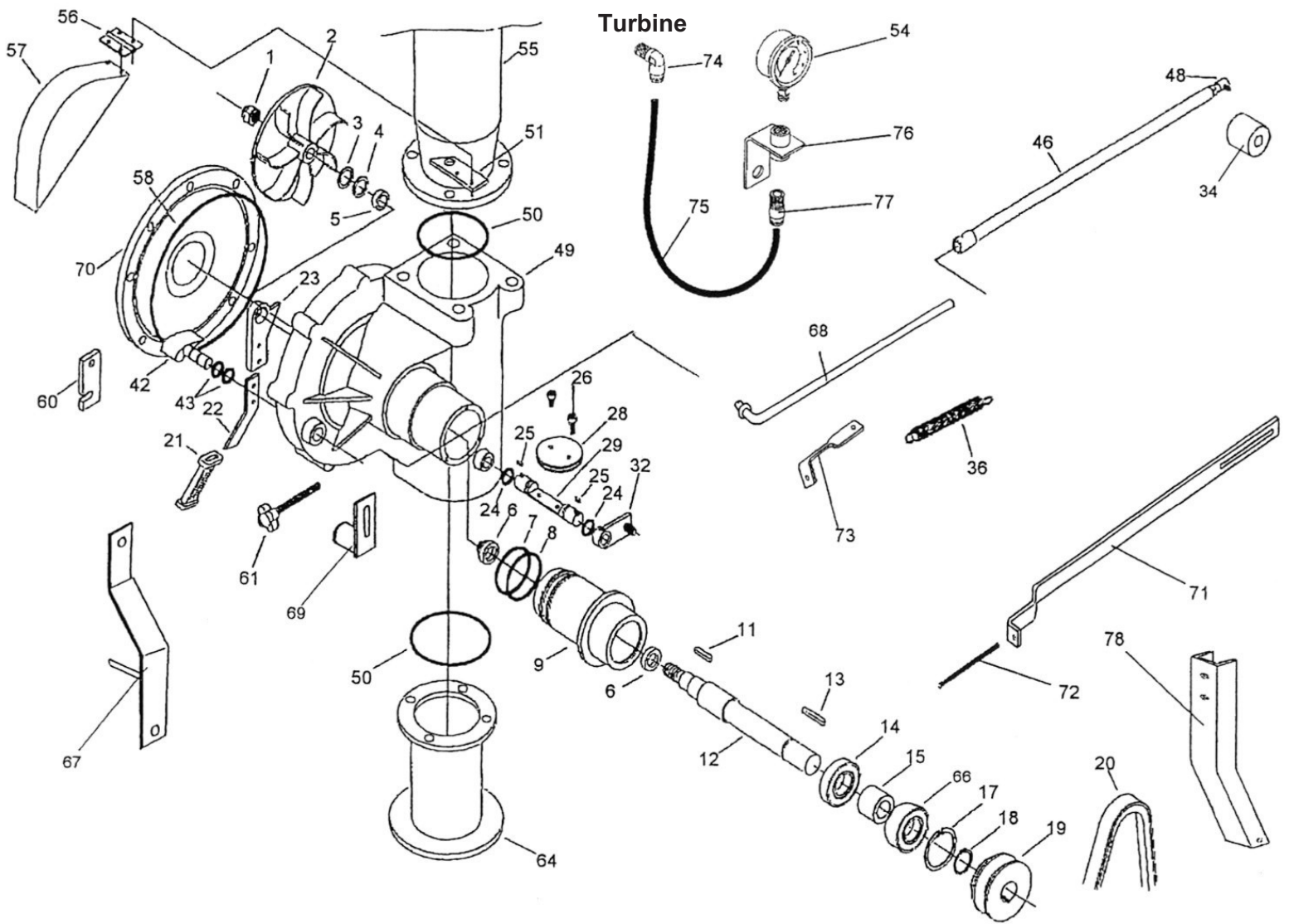
Gearbox



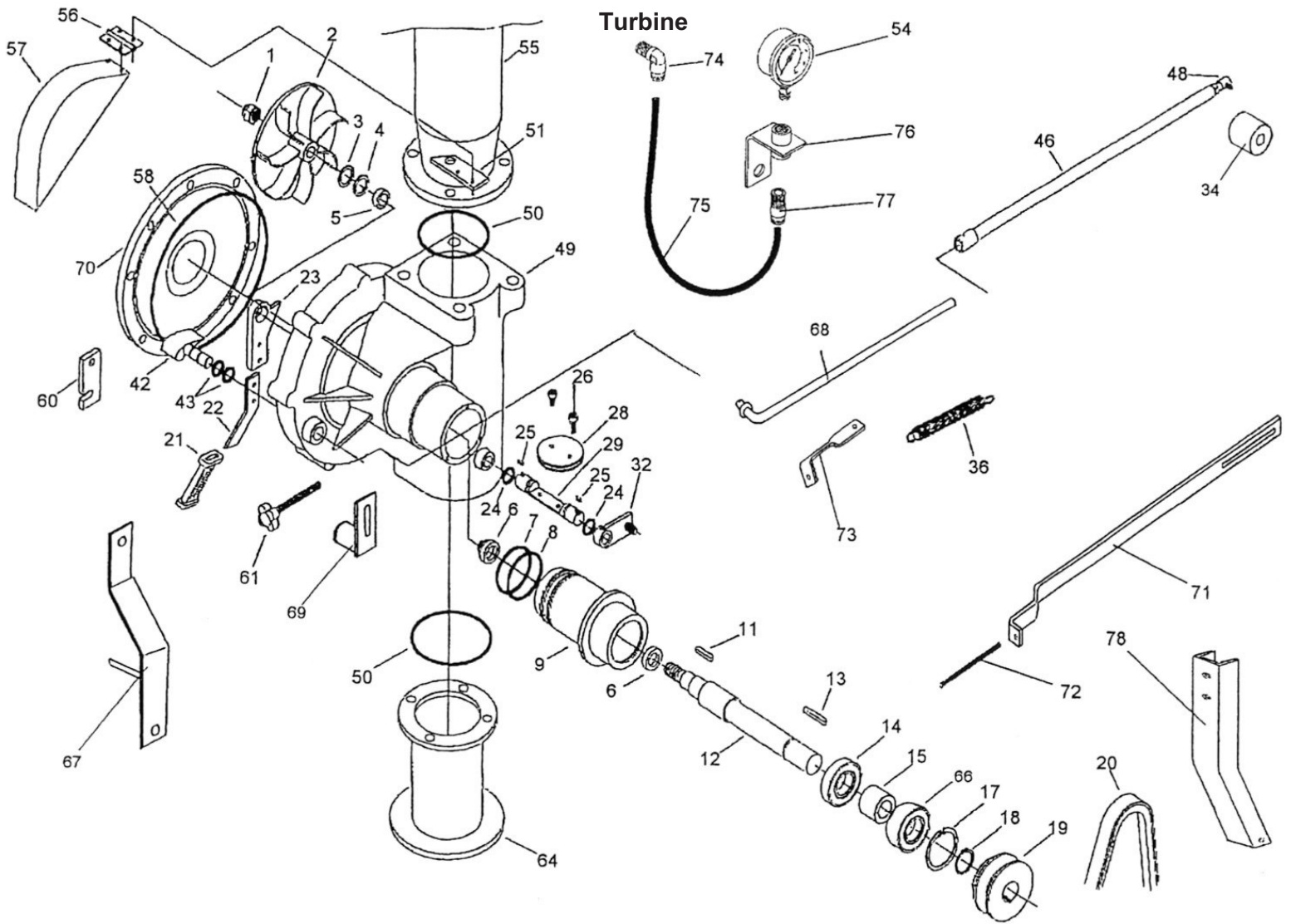
54	022-0189-0	Ring, Stop	1
55	022-0549-0	Key 6 x 6 x 25	1
56	022-0791-0	Ball	1
	022-1026-1	Shaft Assm. R53/27 Complete	1
	500-0470-0	Shut Off Cable Kit (Not Shown-Turbine Drives Only)	1



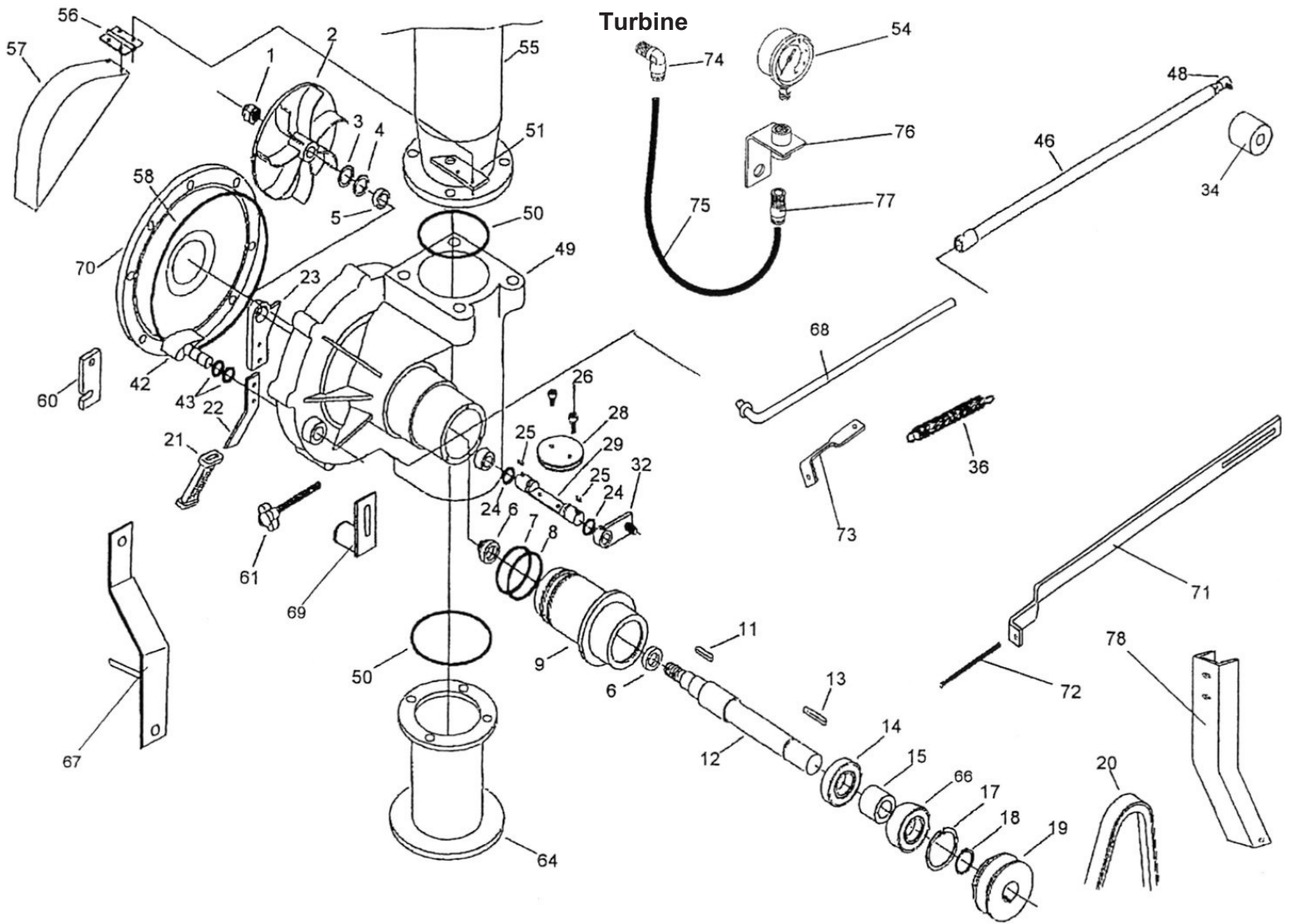
No.	Part Number	Description	Qty.
1	022-0198-0	Nut, Self Locking Thin 14 x 1.5mm	1
2	022-0199-3	Impeller 6.77 OD x .87 Vane Height	1
3	022-0543-0	Spacer Mylar, .039" Thick	2
4	022-0300-2	Spacer, 15mm (.6"Long)	1
5	022-0544-0	Spacer, .984"OD x .787"ID x .197"Thick	1
6	022-0545-0	Seal 20 x 6	1
7	022-0546-0	O-Ring 2.30" ID x .103"C/S	1
8	022-0546-1	O-Ring 2.362" ID x .103"C/S	1
9	022-0548-0	Turbine Housing T200	1
11	022-0337-0	Key, 5mm x 5mm x 10mm Long	1
12	022-0550-0	Impeller Shaft	1
13	022-0551-0	Key 6 x 50	1
14	022-0167-0	Bearing, 6204 2RS	1
15	022-0552-1	Spacer, 1.8" Long	1
17	022-0324-0	Retaining Ring i47	1
18	022-0323-0	Retaining Ring E20	1
19	022-0592-0	Pulley Three Step	1
20	022-0555-2	Belt A83	



21	022-0566-0	Hand Grip		1
22	022-0557-0	Plate By-Pass Lever		1
23	022-0558-0	Lever		1
24	022-0559-0	O-Ring 120 15,54 x 2.62		2
25	022-0319-0	Key, 6mm x 6mm x 10mm Long		2
26	022-0305-0	Screw, 6 x 16 Inox		2
28	022-0562-0	Disc, By-Pass		1
29	022-0563-2	By-Pass Shaft		1
31	596-0041-0	Gauge Protector		1
32	022-0564-0	By-Pass Lever		1
34	022-0660-0	Spacer 1" OD x 2.4" Long x 8mm Threads		1
36	022-0318-0	Spring		1
42	022-0566-0	Regulator Flap with Pin		1
43	022-0331-0	O-ring		2
46	022-0569-1	By-Pass rod		1
48	022-0341-0	Rod End		1
49	022-0302-1	Turbine Body		1
50	022-0484-0	O-Ring		2
51	022-0571-0	Support		1

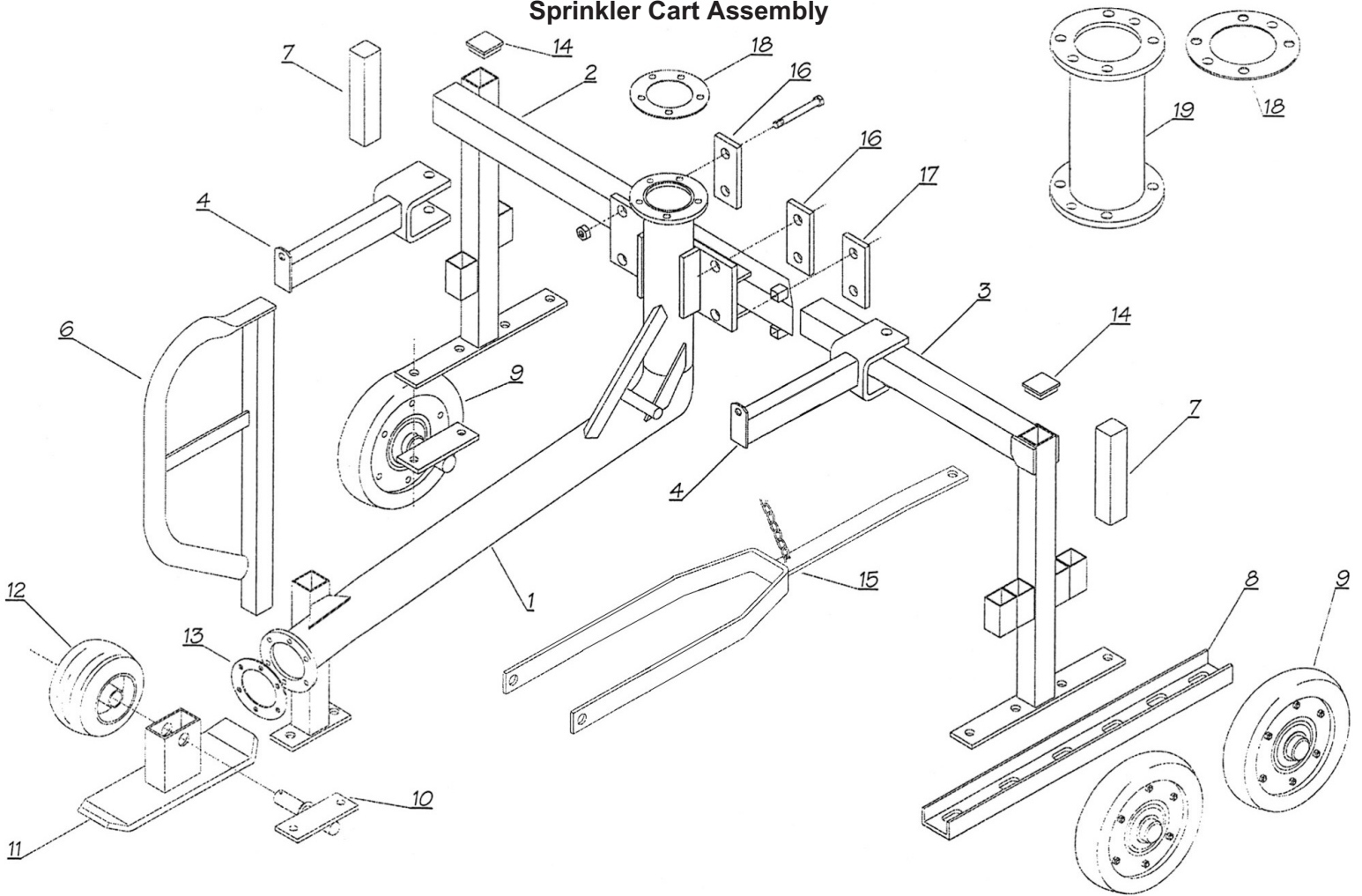


54	586-0675-0	Gauge 0-300		1
55	022-0655-1	Upper Elbow		1
56	022-0389-0	Hinge		1
57	022-0388-0	Shield, Belt		1
58	022-0572-0	O-Ring i286 x 3.53		1
60	022-0573-0	Stop Plate		1
61	022-0391-0	Knob		1
64	022-483-1	Lower Feeding Elbow		1
65	990-7030-0	Overhaul it Runner Shaft. 25/120(Not Shown)		1
66	022-0167-1	Bearing, 5204 2RS		1
67	022-0648-0	Arm, Comp		1
68	022-0649-0	Link, Comp		1
69	022-0650-0	Loop, Comp		1
71	022-0794-0	Bar, Shut Off		1
72	022-0795-0	Stud, All Thread		1
73	022-0796-0	Bracket, Spring		1
74	525-4915-2	Ftg, TB 90 Deg. 1/4"MNPT x 5/16" Tube		1



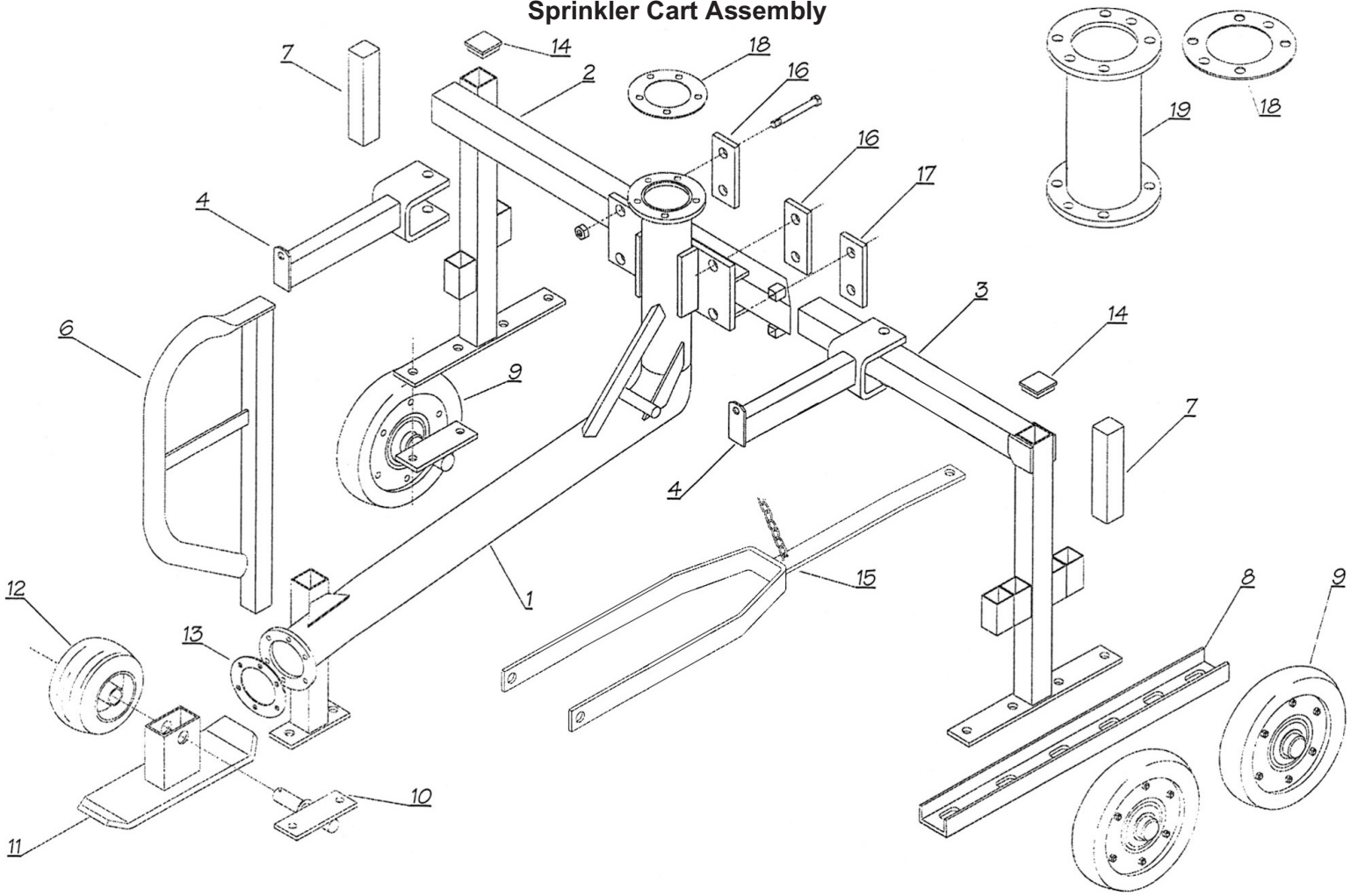
75	252-4939-2	Tube, Synflex 5/16"	Ft.	2
76	599-0148-0	Gauge Mount		1
77	525-4915-4	Ftg, TB Straight 1/4" MNPT x 5/16" Tube		1
78	022-0797-0	Arm Clutch Disengage		1

Sprinkler Cart Assembly



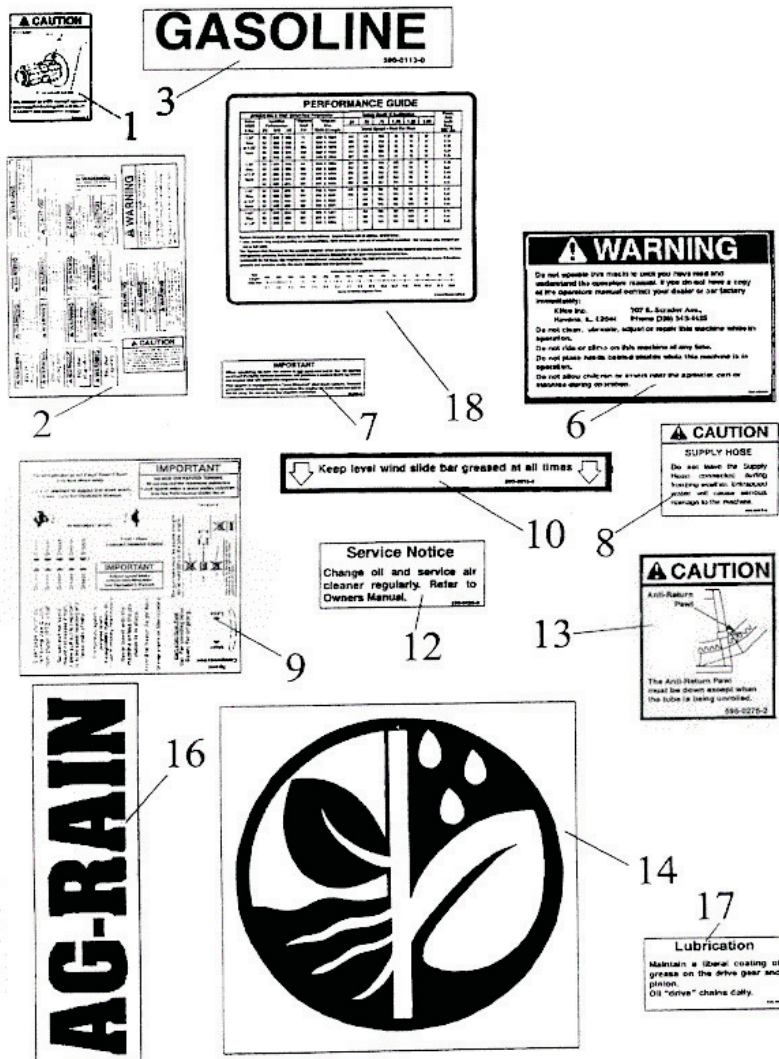
No.	Part Number	Description	Qty.
1	022-1299-0	Main Frame	1
2	022-0986-0	Small Leg	1
3	022-0987-0	Length Leg	1
4	022-1300-0	Stirrup Trolley Coupler	2
5	504-0481-0	Stop Bar Support	1
6	022-1301-0	Stop Bar Support	1
7	022-0715-0	Ballast	4
8	022-1302-0	U-Bolt	2
9a	022-0990-0	Wheel	2
9b	50201740	WHEEL&TIRE ASSY 6.70X15 4.5BCD4BOLT (not shown)	2
9c	500-0282-0	Spindle Rear Guncart (not shown) (for wheel # 9c)	2
9d	588-0356-5	Seal, Grease Wilton 906282 (not shown) (for wheel # 9c)	2
9e	588-0356-8	Bearing, Timken L-44649 (not shown) (for wheel # 9c)	2
9f	588-0356-6	Race L44610 (not shown) (for wheel # 9c)	2
9g	588-0656-4	Hub (not shown) (for wheel # 9c)	2
9h	588-0356-0	Lug Bolt Wilton 913535 (not shown) (for wheel # 9c)	8
9i	588-0356-7	Washer, Spindle Wilton 913608 (not shown) (for wheel # 9c)	2
9j	588-0356-2	Nut Wilton 912953 (not shown) (for wheel # 9c)	2
9k	588-0356-1	Cap, Hub Wilton 909981 (not shown) (for wheel # 9c)	2

Sprinkler Cart Assembly



9L	227-0256-0	Tire,6.70X15 4 PLY (not shown) (for wheel # 9c)	2
9m	588-0254-1	Wheel, 15 X 4-1/2 4Bolt 5BCD GLV. (not shown)(for wheel # 9c)	2
10	022-0991-0	Slide Support	1
11	022-0992-0	Slide	1
12	022-0993-0	Center Wheel	1
13	022-0994-0	Gasket	1
14	022-0995-0	Plug 70 x 70	2
15	022-1496-0	Draw Bar	1
16	022-1303-0	Big Plate	2
17	022-1304-0	Small Plate	1
18	020-0018-5	Gasket	1
19	599-0182-0	Adapter	1

Decal Group



No.	Part Number	Description	Qty.
1	595-0275-1	Decal, PTO Rewind	1
2	594-0565-1	Decal, Warning	1
3	590-0113-0	Decal, Gasoline	1
6	597-0124-0	Decal, Warning	1
7	595-0501-0	Decal, Important Choke Full Open	1
8	596-0017-0	Decal, Supply Hose	1
9	594-0565-0	Decal, Instruction	1
10	590-0013-0	Decal, Levelwind Lubrication	1
12	596-0426-0	Decal, Change Oil	1
13	595-0275-2	Decal, Anti-Return Pawl	1
14	585-0299-3	Decal, Round Logo 10"	6
16	585-0404-2	Decal, Ag-Rain 3" Letters	3
17	596-0428-0	Decal, Lubrication	1
18	599-0373-0	Decal, Performance Guide	1
	596-0309-0	Decal, Caution Brake Adjustment (Not Shown)	1
	599-0361-7	Decal, A50 Turbine (Not Shown)	1
	597-0055-0	Decal, Warning Read Operator Manual (Not Shown)	1